

SURVEY IN SECTION 16, T29S, R6W, W.M., DOUGLAS CO., OREGON  
 Surveyed For Willis Creek Properties Inc. by Victor M. McLind  
 July 1971

Bearings Based on Solar Observation April 1, 1971

Scale: 1" = 200'

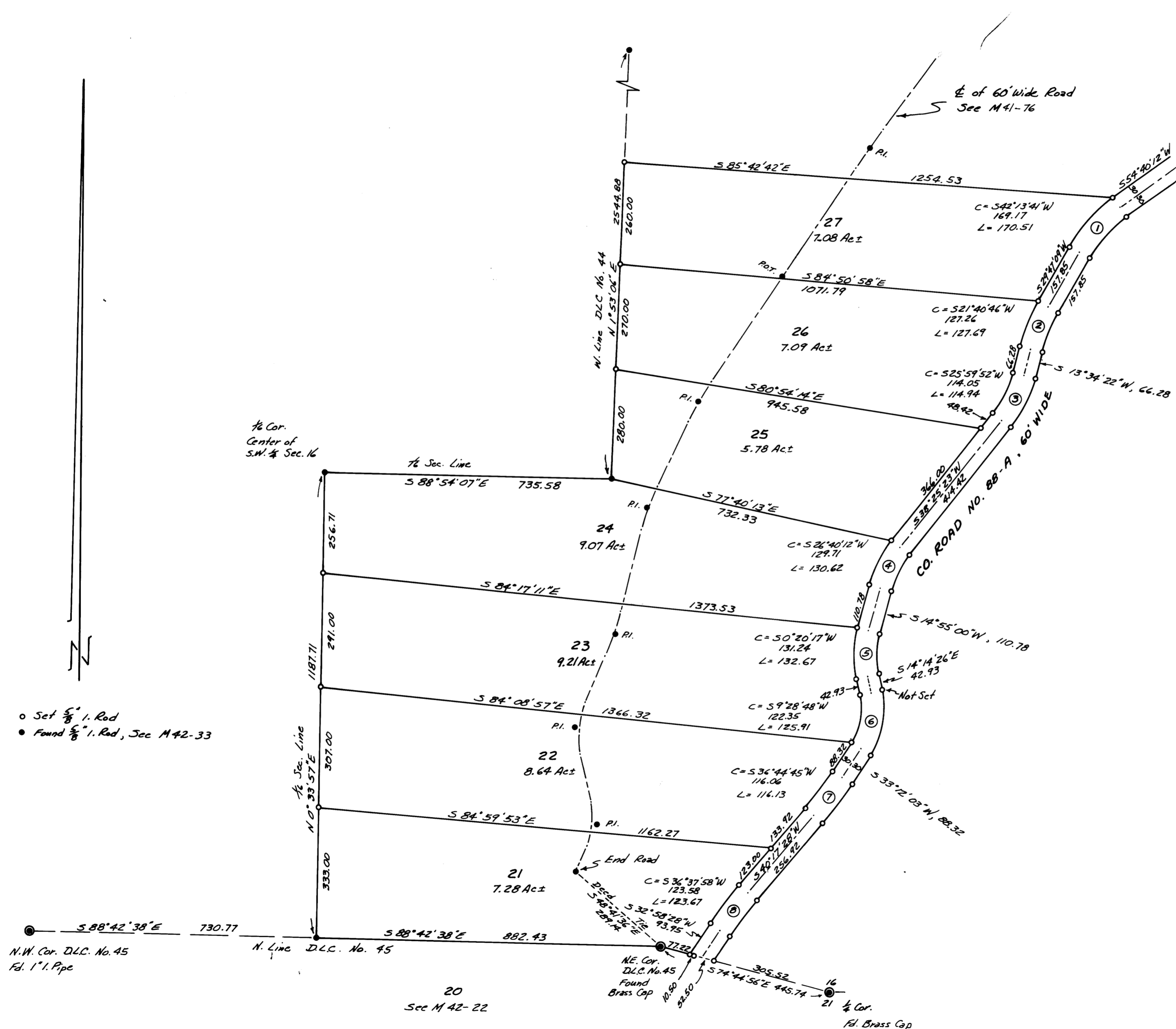
COUNTY SURVEYORS FILE DATA  
 DO NOT REMOVE FROM OFFICE

FILED RECEIVED

AUG 9 1971

COUNTY SURVEYOR  
 DOUGLAS COUNTY, ORE.

M 43 - 26



Δ CURVE DATA

- ①  
 $\Delta = 24^{\circ}53'03''$   
 $R = 362.59$   
 $L = 157.48$   
 $T = 80.00$   
 $C = 156.24$
- ②  
 $\Delta = 16^{\circ}12'47''$   
 $R = 421.24$   
 $L = 119.20$   
 $T = 60.00$   
 $C = 118.80$
- ③  
 $\Delta = 24^{\circ}51'01''$   
 $R = 295.02$   
 $L = 127.96$   
 $T = 65.00$   
 $C = 126.96$
- ④  
 $\Delta = 23^{\circ}30'23''$   
 $R = 288.38$   
 $L = 118.31$   
 $T = 60.00$   
 $C = 117.48$
- ⑤  
 $\Delta = 29^{\circ}09'26''$   
 $R = 230.70$   
 $L = 117.40$   
 $T = 60.00$   
 $C = 116.14$
- ⑥  
 $\Delta = 47^{\circ}26'29''$   
 $R = 182.07$   
 $L = 150.75$   
 $T = 80.00$   
 $C = 146.48$
- ⑦  
 $\Delta = 7^{\circ}05'25''$   
 $R = 968.47$   
 $L = 119.85$   
 $T = 60.00$   
 $C = 119.77$
- ⑧  
 $\Delta = 7^{\circ}19'00''$   
 $R = 938.43$   
 $L = 119.84$   
 $T = 60.00$   
 $C = 119.76$

○ Set  $\frac{5}{8}$ " I. Rod  
 ● Found  $\frac{5}{8}$ " I. Rod, Sec M 42-33

N.W. Cor. D.L.C. No. 45  
 Fd. 1" Pipe

N. Line D.L.C. No. 45

NE Cor. D.L.C. No. 45  
 FOUND BRASS CAP

1/4 Cor. Fd. Brass Cap

REGISTERED  
**OREGON**  
 LAND SURVEYOR  
*Victor M. McLind*  
 JULY 7 1970  
 VICTOR M. MCLIND  
 93.4

M 43 - 26