

COUNTY SURVEYORS FILE DATA  
DO NOT REMOVE FROM OFFICE

FILED *[Signature]*  
RECEIVED

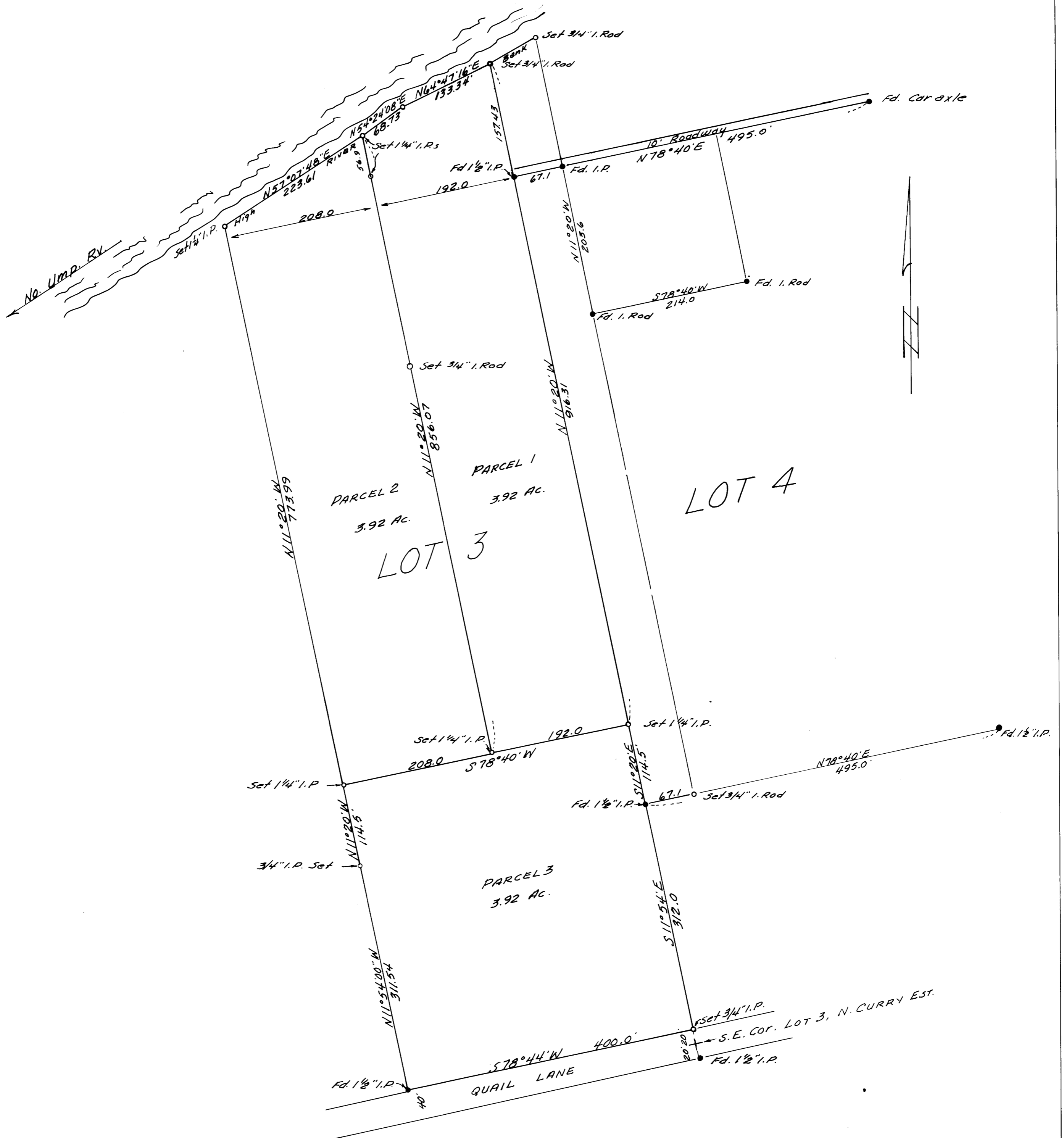
AUG 5 1971

COUNTY SURVEYOR  
DOUGLAS COUNTY, ORE

SURVEY FOR DEED DESCRIPTION  
LOTS 3 & 4, N. CURRY ESTATES  
PLAT "C"

SURVEYED FOR- MORRIS BURKHART  
SURVEYED BY- W.S. BARNES

JUNE 1971  
SCALE - 1" = 100'



Note: Base bearing taken from East  $\bar{12}$  -  $N11^{\circ}20'W$ .  
Refr. C.S. File 51-49  
" C.S. File 160-31

