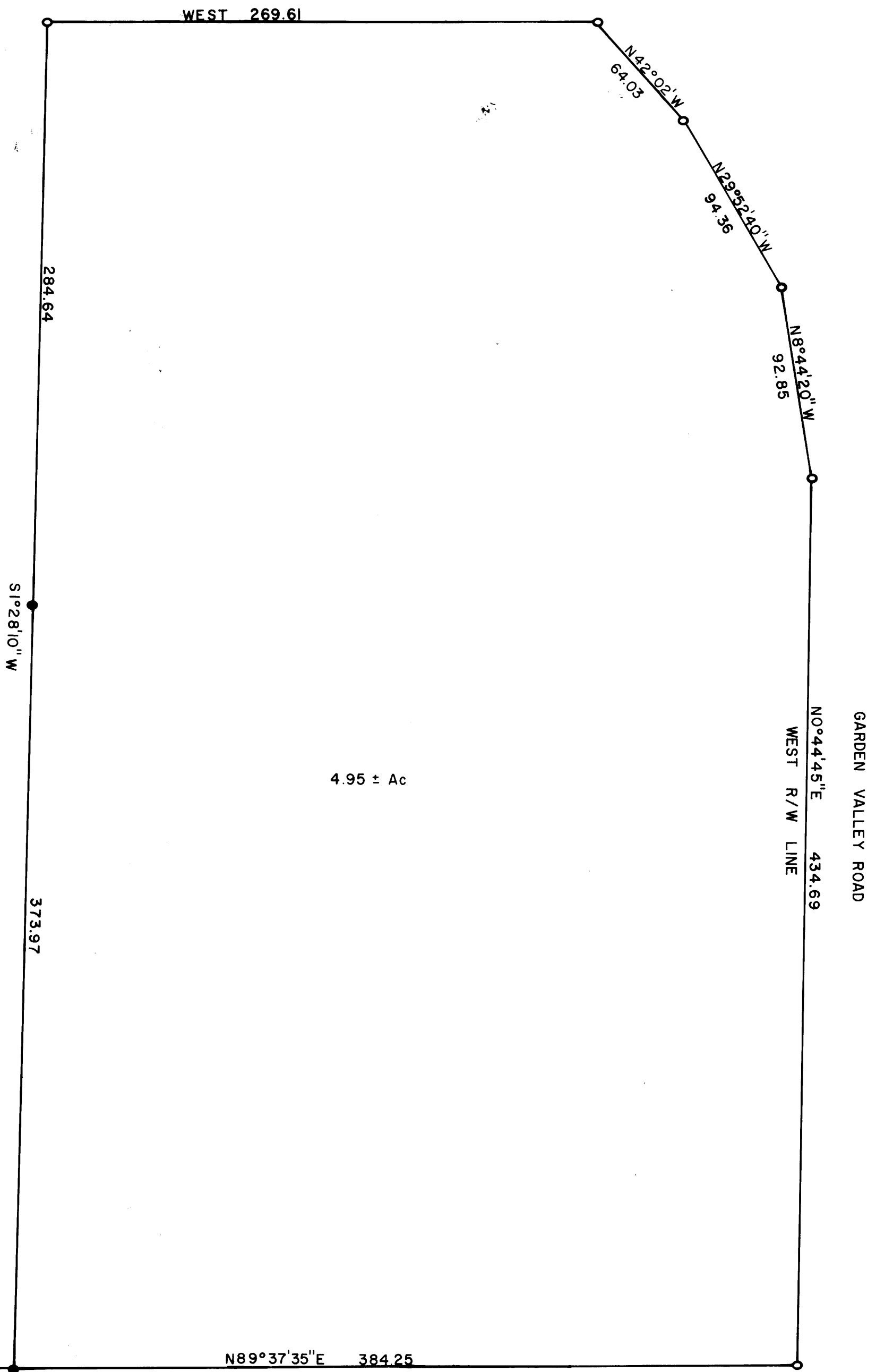


FILED
RECEIVED

AUG 4 1971

COUNTY SURVEYOR
DOUGLAS COUNTY, ORE.



4.95 ± Ac

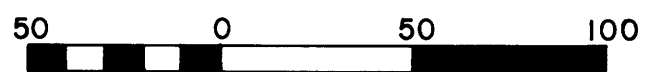
S89°37'35\"W,
253.15

N89°37'35\"E 384.25

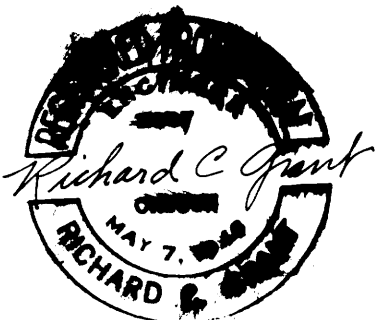
- FENCE COR
- S.W.COR. LOT 1, BLK. 2, R.H.O.T. PLAT B ● Corner found, 5/8" iron rod
- Corner set, 5/8" iron rod

SURVEY FOR DEED DESCRIPTION
 LOT 1, BLOCK 2, R.H.O.T., PLAT B
 T. 26 S., R. 6 W., W.M.
 SURVEYED FOR SY NASH
 SURVEYED BY RICHARD C GRANT

AUGUST 4, 1971



Scale: 1" = 50'



COUNTY SURVEYORS FILE DATA
 DO NOT REMOVE FROM OFFICE