

# SURVEY FOR UNITED STATES OF AMERICA

T19S, R10W, W.M.

DOUGLAS COUNTY, OREGON

SCALE 1" = 1000'

JULY 29, 1971

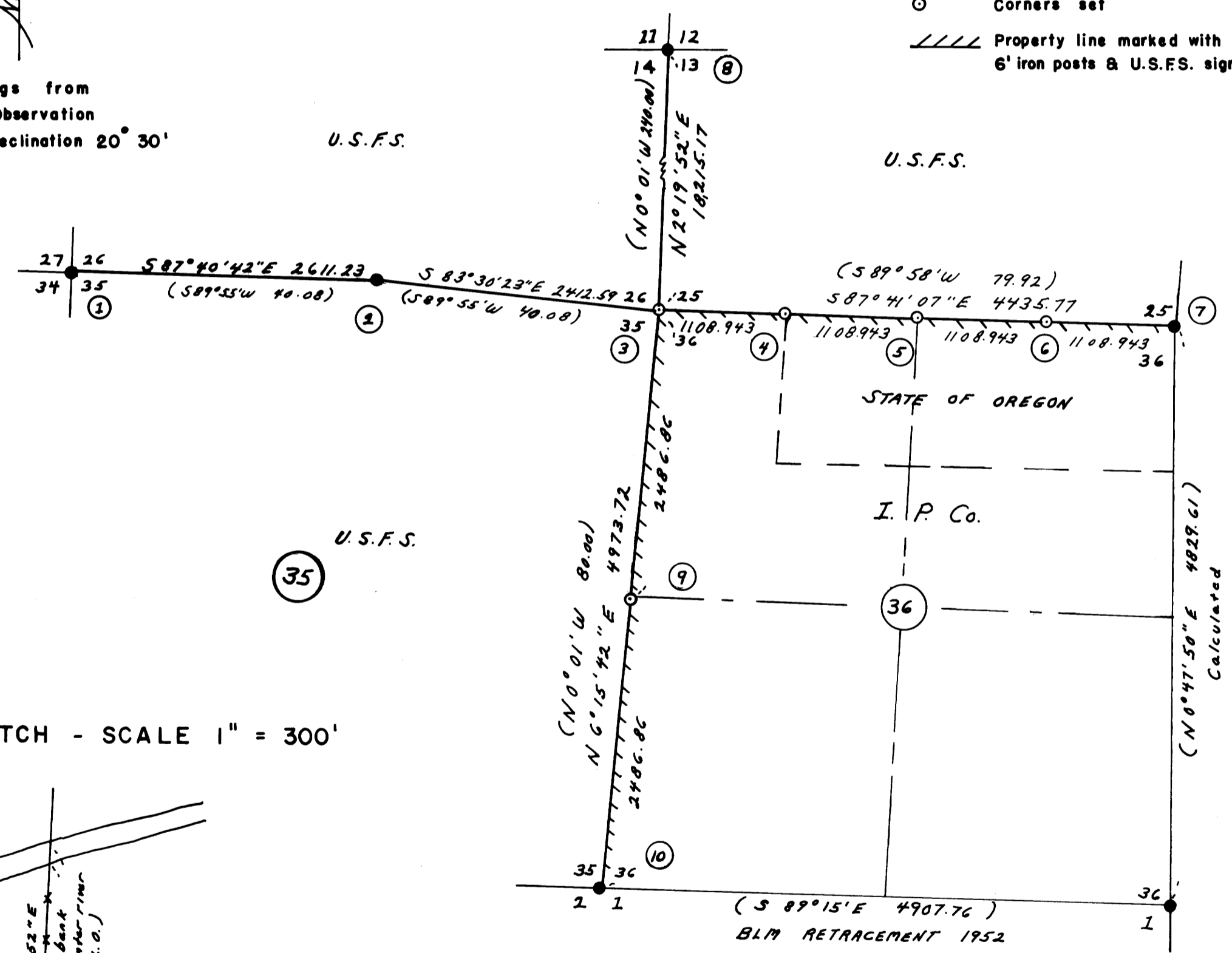
Bearings from  
Solar Observation  
mean declination 20° 30'

LEGEND  
● Corners found  
○ Corners set  
//// Property line marked with  
6' iron posts & U.S.F.S. signs

PROJECT NAME - SULPHUR CADASTRAL SURVEY NO. 1-71  
CONTRACT NO. - 0031409  
FIELD BOOK REF. - 0031409 - BOOKS 4, 5, 6

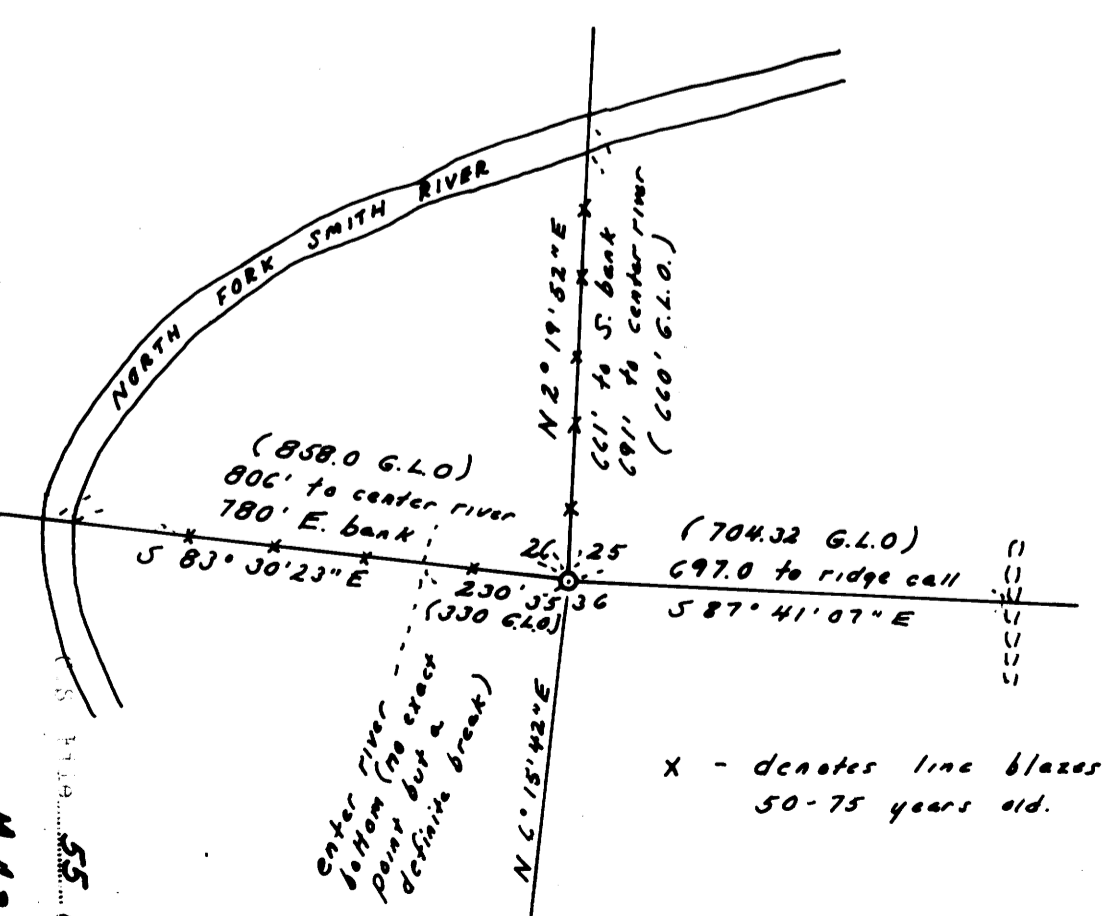
All bronze caps set are 2 1/2" welded on 2" x 36" galvanized pipe set 24" in ground. Marked 1971 - 4185 and corner identification.

Corners Number 4, 5, 6, and 9 were set by proportional measure. Corner Number 3 was set as noted elsewhere on plat.



Corner Monument	Accessories
1 Fd bronze cap	B.T.s rescribed by Douglas County, 1964: 36" D. Fir bears S 64° W 11.9 ft., 36" D. Fir bears S 7° E 12.5 ft., 42" D. Fir bears N 58° E 35.6 ft., New B.T. 10" hemlock bears N 29° E 90.0 ft.
2 Set bronze cap	Found original B.T. 18" D. Fir bears S 21° E 38.94 ft., now 32". We cut out face finding scribing. Set new B.T.s: 24" D. Fir bears S 19° W 51.0 ft., 36" D. Fir bears N 25° E 41.75 feet.
3 Set bronze cap	Set new B.T.s: 20" D. Fir bears N 6° E 30.7 ft., 32" D. Fir bears N 13° W 33.1 ft., 22" D. Fir bears S 50° W 53.90 ft., 26" D. Fir bears S 68° E 21.0 feet.
4 " "	Set new B.T.s: 36" D. Fir bears due North 20.4 ft., 20" hemlock bears S 17° E 14.27 feet.
5 " "	Set new B.T.s: 32" D. Fir bears N 10° E 50.3 ft., 28" D. Fir bears S 60° E 29.27 feet.
6 " "	Set new B.T.s: 18" hemlock bears N 23° W 17.9 ft., 14" hemlock bears S 56° E 17.25 feet.
7 Fd bronze cap & corner tree	B.T.s rescribed by Douglas County, 1964: 40" D. Fir bears N 31/2° W 4.0 feet, 38" hemlock bears S 83° W 46.9 feet.
8 Fd bronze cap	Reset by Douglas County, 1971, New B.T. 30" D. Fir stump bears S 6° W 38.7 feet, Also iron fence post by corner and 5/8" reference rods as shown in county records.
9 Set bronze cap	Set new B.T.s: 20" D. Fir bears N 54° W 27.5 ft., 46" D. Fir bears S 39° E 12.0 feet.
10 Fd. bronze cap	Set by proportionate measure by B.L.M., 1952. New B.T.'s: 16" maple bears N 4 1/2° E 111 lks., 16" alder bears S 47° 45' E 25 lks., 18" alder bears S 17 1/2° W 63 lks., 60" fir bears N 7 1/4° W 164 lks.

INSERT SKETCH - SCALE 1" = 300'



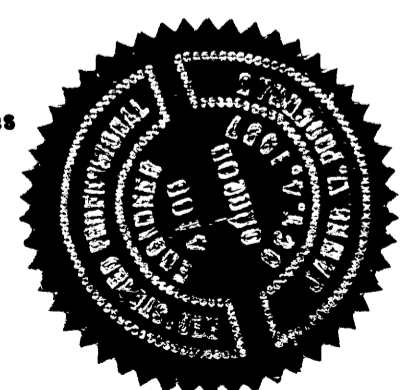
Notes on setting 26/25  
35/36

This corner was set by intersection of line blazes running West to the N. Fork Smith River and North to the N. Fork Smith River. Several of these blazes were cut out and found to be from 50 to 75 years old, dating back to the original G.L.O. survey. The calls, as shown on the insert sketch agree quite well with G.L.O. calls. Considering the course of the river the corner could not be located very far from the blaze intersection and fit the G.L.O. calls in any way. The river calls near the N.W. corner 35 and N 1/4 35 (both found original corners) fit closely. Double proportion was not used since this would place the corner approximately 190 feet North of the river (G.L.O. - 660 feet South) and 500-600 feet West of the river (G.L.O. - 858 feet East), or grossly out of position with the calls.

I consulted with the Branch of Cadastral Surveys, Bureau of Land Management, Portland, Oregon who were in concurrence with the method used in setting this corner.

I, James W. Prochnau, a registered Engineer in the State of Oregon, hereby certify that this plat and the notes hereon, or attached, are a correct representation of a survey I performed during May-July, 1971, for the U.S. Forest Service, in accordance with the statutes of the State of Oregon and with the Articles of my contract.

James W. Prochnau  
Registered Oregon Engineer # 4185





COUNTY OF DOUGLAS  
OFFICE OF THE SURVEYOR  
ROSEBURG, OREGON

August 5, 1971

Jackson & Prochnau, Inc.  
James W. Prochnau  
P. O. Box 177  
Albany, Oregon 97321

Dear Mr. Prochnau:

We have received, filed and mailed your prints of survey of Section 36, Township 19 South, Range 10 West, W. M., our index number Map M 43 - 22.

It seems your method of setting the northwest corner of Section 36 is O. K., but I am curious about the call to the river on the north boundary of the section. If you have that information, will you please send it to me?

The gold seal you have pasted on your tracings has a tendency to come unglued and the prints do not reproduce well at that spot. It would be much better if you would stamp and sign the tracings. The next time you are coming to Roseburg you could bring your stamp and add it to the tracings you have on file.

Yours truly,

James W. Byron  
County Surveyor

JWB/11

JACKSON & PROCHNAU  
INCORPORATED  
CONSULTING FOREST ENGINEERS  
MEMBER SOCIETY OF AMERICAN FORESTERS REGISTERED PROFESSIONAL ENGINEERS  
P. O. Box 177  
ALBANY, OREGON

August 12, 1971

Mr. James W. Byron  
Douglas County Surveyor  
Roseburg, Oregon

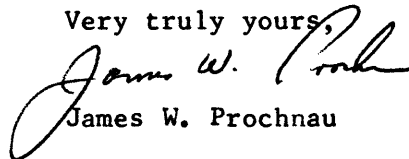
Re: Section 36, T19S, R10W, W.M.

Dear Mr. Byron:

In answer to your query, the call to the Smith river on the North line of Section 36 is approximately 1700 feet East to the center of the river from the Northwest corner of Section 36. This is not at all in agreement with the G.L.O. call of 1232 feet but of course this mile is 800 feet short.

Bill Glenn of the B.L.M. Cadastral office in Portland has retraced quite a bit of this surveyor's work and believes he traversed up the river to set his corners. In my opinion the North line of 36 probably was not closed out at all.

Very truly yours,

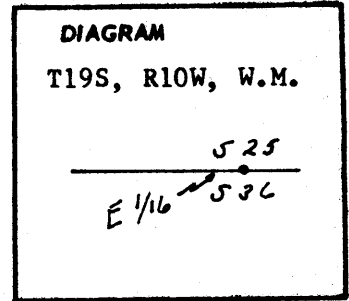
  
James W. Prochnau

CS 55/206-  
13

CERTIFIED RECORD OF LAND CORNER MONUMENTATION

History of original corner establishment:

Never Set



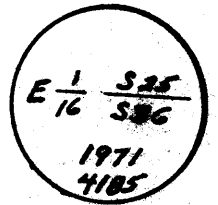
Description of corner evidence found:

None

Description of monument and accessories I established to perpetuate the original location of this corner

At the properly proportioned position I placed a 2" X 36" galvanized iron pipe, flanged at the bottom and capped with a bronze disk welded on top. The monument projects 6" above ground. I filled in around the pipe monument with stone and packed earth.

I stamped the disk



I established new bearing trees as follows. Each bearing tree has a scribed face and a U.S.F.S. sign breast high and facing the monument.

Bearing trees set:

- a 18" hemlock bears N 23° W 17.9 feet
- a 14" hemlock bears S 56° E 17.25 feet

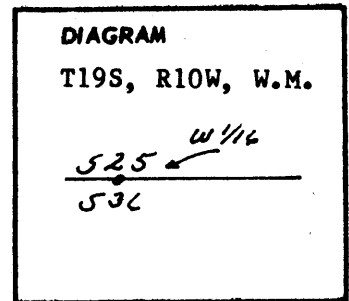
Office of County Surveyor County of Douglas  
Oregon  
 State of Oregon, I hereby certify that the within instrument was filed in this office  
 for record on the 4 day of AUGUST, 1971, at 2 o'clock P.m., (signed)  
James W. Ryan by \_\_\_\_\_  
 (COUNTY OFFICIAL) (DEPUTY)

*James W. Ryan*

CERTIFIED RECORD OF LAND CORNER MONUMENTATION

History of original corner establishment:

Never Set



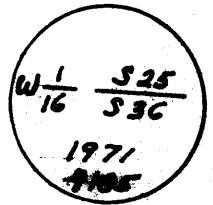
Description of corner evidence found:

None

Description of monument and accessories I established to perpetuate the original location of this corner

At the properly proportioned position I placed a 2" X 36" galvanized iron pipe, flanged at the bottom and capped with a bronze disk welded on top. The monument projects 6" above the ground. I filled in around the pipe monument with stone and packed earth.

I stamped the disk



I established new bearing trees as follows. Each bearing tree has a scribed face and a U.S.F.S. bearing tree sign breast high and facing the monument.

Bearing trees set:

- a 36" D. Fir bears due North 20.4 feet
- a 20" hemlock bears S 17° E 14.27 feet

Office of County Surveyor ..... County of Douglas  
 State of Oregon ..... , I hereby certify that the within instrument was filed in this office  
 for record on the 4 day of AUGUST, 1971, at 2 o'clock P.m., (signed)  
 James W. Patten by .....  
 (COUNTY OFFICIAL) (DEPUTY)

*James W. Patten*

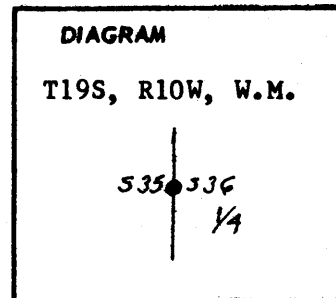
CERTIFIED RECORD OF LAND CORNER MONUMENTATION

History of original corner establishment:

Corner established in 1895 by General Land Office  
Resurveyed in 1899 - Contract Survey

Original Survey record states: The 1/4 sec. cor.  
established in former survey ( 1895 ) which is a  
chittem tree 6 ins. diam. marked 1/4S 35 on W. &  
36 on E. sides. From which:

- a vine maple 6 ins. diam. bears S 25° E 16 lks. dist. marked 1/4S B.T.
- a fir 10' ins. diam. bears S 83° W 16 lks. dist. Marked 1/4S B.T.



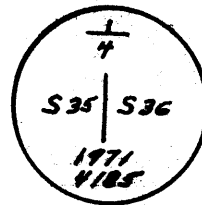
Description of corner evidence found:

none

Description of monument and accessories I established to perpetuate the original location of this corner

At the properly proportioned distance I placed a 2" X 36" galvanized iron pipe, flanged at the bottom and capped with a bronze disk welded on the top. The monument projects 6" above the ground. I filled in around the pipe monument with stone and packed earth.

I stamped the disk



I established new bearing trees as follows. Each bearing tree has a scribed face and a U.S.F.S. bearing tree sign breast high and facing the monument.

Bearing trees set:

- a 20" D. Fir bears N 54° W 27.5 feet
- a 46" D. Fir bears S 39° E 12.0 feet

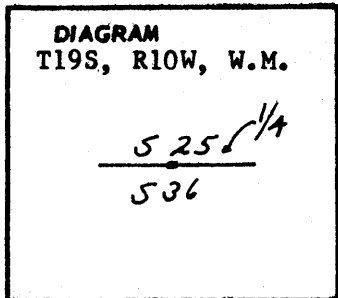
Office of County Surveyor ..... County of Douglas  
 State of Oregon ..... , I hereby certify that the within instrument was filed in this office  
 for record on the 4 day of AUGUST, 1971, at 2 o'clock P.m., (signed)  
 James W. [Signature] by .....  
 (COUNTY OFFICIAL) (DEPUTY)

*James W. [Signature]*

**CERTIFIED RECORD OF LAND CORNER MONUMENTATION**

**History of original corner establishment:**

Corner established in 1895 by General Land Office  
Resurveyed in 1899 - Contract Survey



Original Survey record states: Set a fir post 3 ft. long, 3 ins. sq., 24 ins. in the ground for 1/4 sec. cor. Marked 1/4 S25 on N. and 36 on S. faces: from which  
A fir 7 ins. diam. bears N 11° E 11 lks. dist. Marked 1/4S B.T.  
A fir 8 ins. diam. bears S 10° E 17 lks. dist. Marked 1/4S B.T.  
Old corner bears N 2 lks. dist. I destroy it. ( corner set in 1895 )

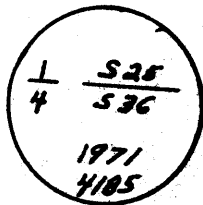
**Description of corner evidence found:**

None

**Description of monument and accessories I established to perpetuate the original location of this corner**

At the properly proportioned position I placed a 2" X 36" galvanized iron pipe, flanged at the bottom and capped with a bronze disk welded on top. The monument projects 6" above ground. I filled in around the pipe monument with stone and packed earth.

I stamped the disk



I established new bearing trees as follows. Each bearing tree has a scribed face and a U.S.F.S. bearing tree sign breast high and facing the monument.

**Bearing trees set:**

- a 32" D. Fir bears N 10° E 50.3 feet
- a 28" D. Fir bears S 60° E 29.27 feet

Office of ... County Surveyor ..... County of ... Douglas .....  
State of ... Oregon ..... , I hereby certify that the within instrument was filed in this office  
for record on the ... day of ... AUGUST ..... 1971, at ... 2 o'clock ... P.m., (signed)

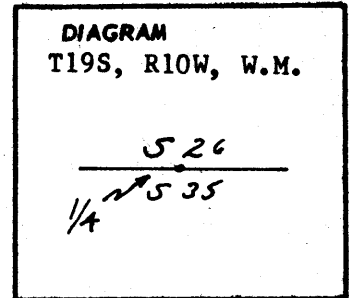
*James W. Pink*  
(COUNTY OFFICIAL) by ..... (DEPUTY)

*James W. Pink*

CERTIFIED RECORD OF LAND CORNER MONUMENTATION

History of original corner establishment:

Corner established in 1895 by General Land Office.  
Resurveyed in 1899 - Contract Survey



Original Survey record states: Corner is a fir tree 7" diameter, marked 1/4S26 on N. & 35 on S. side from which:

- A fir 8 ins. diam. bears N 64° W 34 lks. dist. Marked 1/4S B.T.
- A fir 18 ins. diam. bears S 21° E 59 lks. dist. Marked 1/4S B.T.

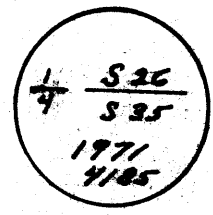
Description of corner evidence found:

Found a faint X and original line blazes. Found a 32" fir with overgrown face - opened face and found original scribing. This is the formerly 18" fir in the Southeast quadrant.

Description of monument and accessories I established to perpetuate the original location of this corner

At the proper distance and bearing from the original B.T., I placed a 2" X 36" galvanized iron pipe, flanged at the bottom and capped with a bronze disk welded on top. The monument projects 6" above ground. I filled in around the pipe monument with stone and packed earth.

I stamped the disk



I established new bearing trees as follows. Each bearing tree has a scribed face and a U.S.F.S. bearing tree sign breast high and facing the monument.

Bearing trees set:

- a 24" D. fir bears S 19° W 51.0 feet
- a 36" D. fir bears N 25° E 41.75 feet

Office of ..... County.. Surveyor..... County of..... Douglas.....  
State of Oregon....., I hereby certify that the within instrument was filed in this office  
for record on the 4 day of AUGUST, 1971, at 2 o'clock P.M., (signed)

*James W. Palmer*  
(COUNTY OFFICIAL) (DEPUTY)

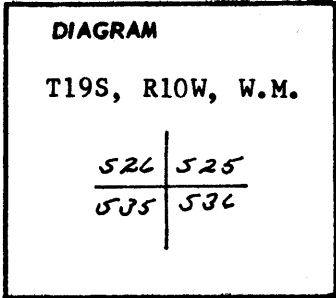
*James W. Palmer*

**CERTIFIED RECORD OF LAND CORNER MONUMENTATION**

**History of original corner establishment:**

Corner established in 1895 by General Land Office  
Resurveyed in 1899 - Contract Survey

Original Survey record states: The corner established on former survey ( 1895 ) which is a fir post 3 ft. long, 4 ins. sq., set 24 ins. in the ground. Marked T19S S.25 on N.E., R10W S.36 on S.E., S.35 on S.W. and S.26 on N.W. faces: with 1 notch on the S. & E. edges. from which:



- An alder 5 ins. diam. bears N 77° E 19 lks. dist. Marked T19S R10W S. 25 B.T.
- A hemlock 6 ins. diam. bears S 5° E 23 lks. dist. Marked T19S R10W S. 36 B.T.
- A vine maple 6 ins. diam bears S 43° W 8 lks. dist. Marked T19S R10W S. 35 B.T.
- A hemlock 15' ins. diam. bears N 28° W 48 lks. dist. Marked T19S, R10W S 26 B.T.

**Description of corner evidence found:**

Found an old blazed line running South from the North Fork Smith River and another running East from the River. We determined this to be the original section line blazes by chopping out several blazes and finding them to be 70 to 75 years old, which dates back to the original survey. Other blazes were as recent as 50 years old. The calls on the river to the North and West and a ridge to the East were checked and found to agree well with the G.L.O. calls from the intersection of the blazed lines.

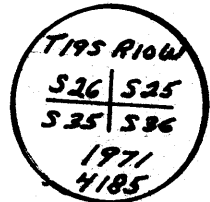
No original bearing trees were found.

Double proportion would place this corner approximately 190 feet North and 5-600 feet West of the river versus the calls of 660 feet South and 858 feet East or grossly out of position. Hence the blaze intersection was used for positioning the corner.

**Description of monument and accessories I established to perpetuate the original location of this corner**

At the intersection of blazed lines I set a 2" X 36" galvanized iron pipe, flanged at the bottom and capped with a bronze disk welded on top. The monument projects 6" above the ground. I filled in around the pipe monument with stone and packed earth.

I stamped the disk



I established new bearing trees as follows. Each bearing tree has a scribed face and a U.S.F.S. bearing tree tag breast high and facing the monument.

**Bearing trees set:**

- a 20" D. Fir bears N 6° E 30.7 feet
- a 32" D. Fir bears N 13° W 33.1 feet
- a 22" D. Fir bears S 50° W 53.90 feet
- a 26" D. Fir bears S 68° E 21.0 feet

Office of County Surveyor ..... County of Douglas .....  
 State of Oregon ..... , I hereby certify that the within instrument was filed in this office  
 for record on the 4 day of AUGUST, 1971, at 2 o'clock P.m., (signed)  
James W. Ryson by .....  
 (COUNTY OFFICIAL) (DEPUTY)

*James W. Ryson*