

SURVEYED FOR DEED DESCRIPTION

SECTION 18, T. 26 S., R. 3 W. W.M.

FOR ROY BOND

BAUGHMAN SURVEYING

FILED
RECEIVED

COUNTY SURVEYORS FILE DATA
DO NOT REMOVE FROM OFFICE

JUL 30 1971

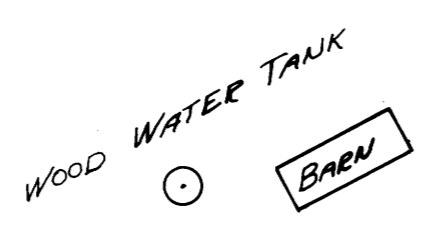
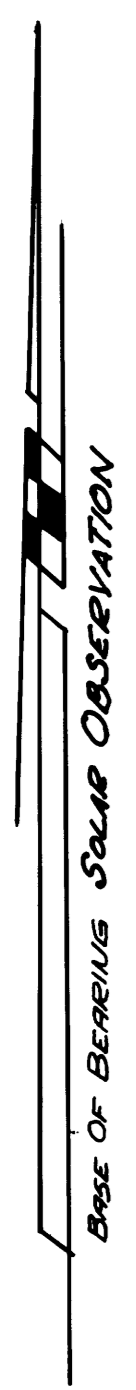
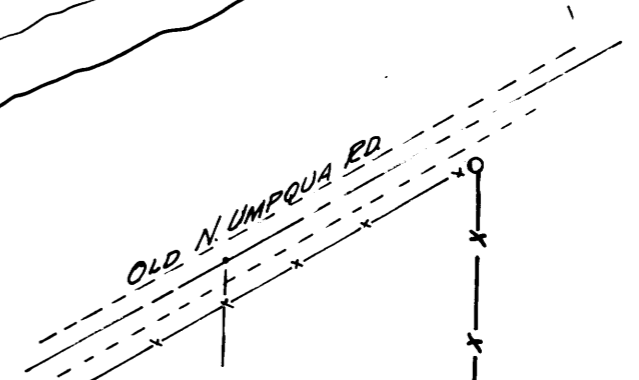
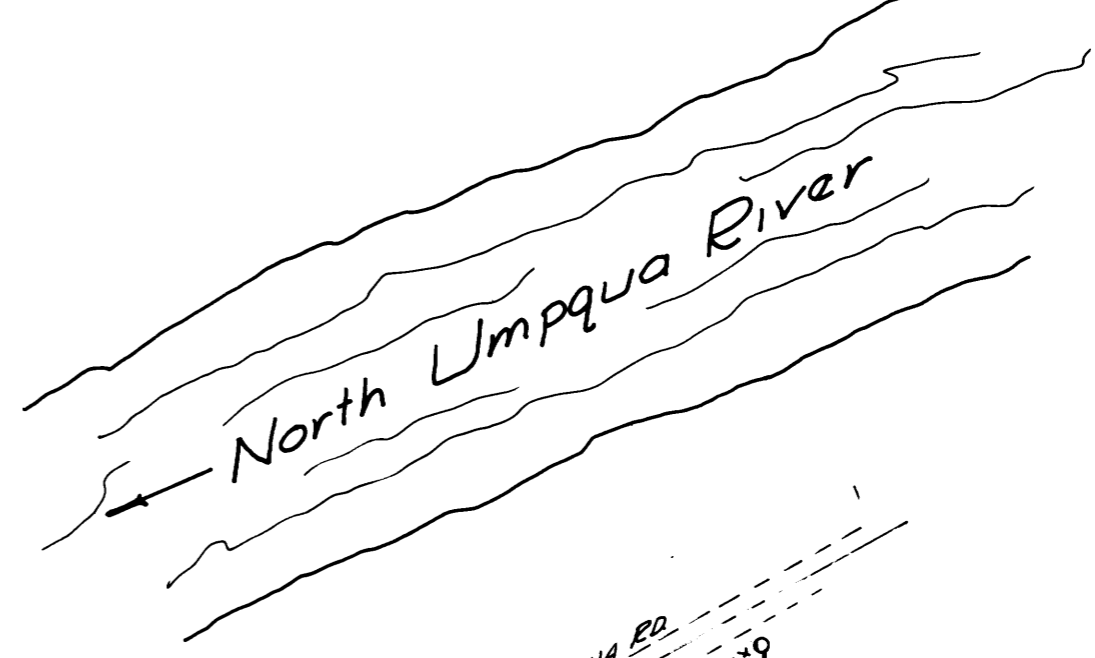
COUNTY SURVEYOR
DOUGLAS COUNTY, ORE.

SCALE 1"=100'

JULY 1971

REGISTERED
OREGON
LAND SURVEYOR

Glenn S. Baughman
JULY 14, 1961
GLENN S. BAUGHMAN
536



VOL. 134 PAGE 476

VOL. 122 PAGE 271

31.29 ACRES ±

PROPOSED E. OF 60' R/W ROAD
N 1° 27' 57" E 422.57'
N 16° 21' 58" E 680.72'
105.50' 19% GSE
73° 50' 57" W
68.04' 22.24'

S 42° 07' 19" W
230.9' RS

S 89° 01' 27" E
245.36' 305.50'

EAST GLIDE SUBDIVISION
NUMBER THREE

LEGEND:
● SET 5/8" I.P.
○ FD. 1" I.P.

1/4 COR. BET. SECS. 18 & 19 T. 26 S., R. 3 W. W.M.

McCord Property

SERAFIN PROPERTY