

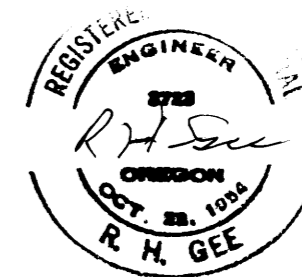
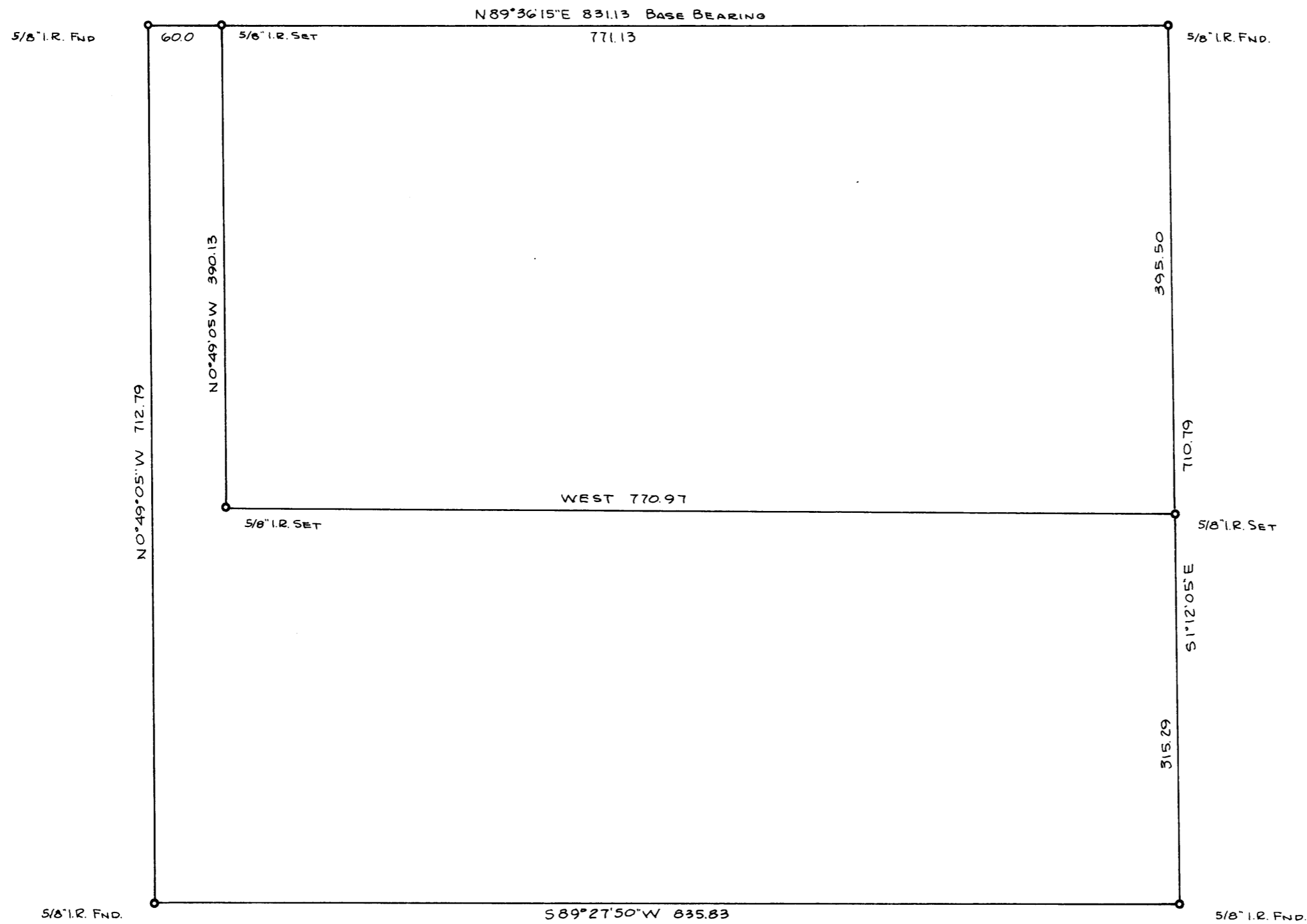
SURVEY IN LOT 56, MELROSE ORCHARDS
 SURVEYED FOR FRED ALBERDING
 SURVEYED BY R. H. GEE - JULY, 1971
 SCALE 1" = 100'

COUNTY SURVEYORS FILE DATA
 DO NOT REMOVE FROM OFFICE

FILED *LL*
 RECEIVED *vy*
 AUG 4 1971

COUNTY SURVEYOR
 DOUGLAS COUNTY, ORE.

NOTE: THIS MAP REPLACES MAP M 43 - 13



M 43 - 13

M 43 - 13