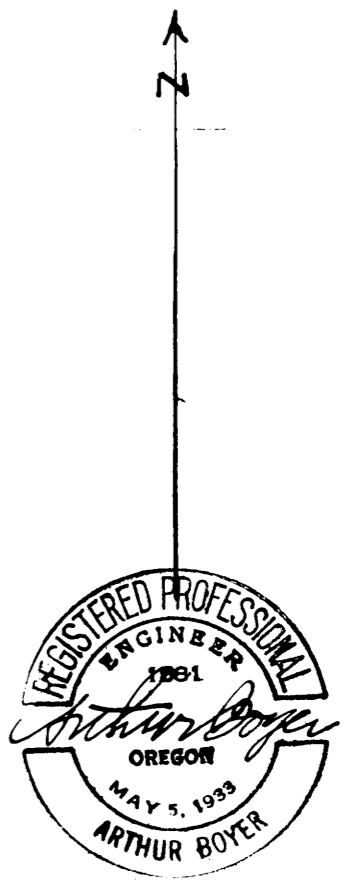
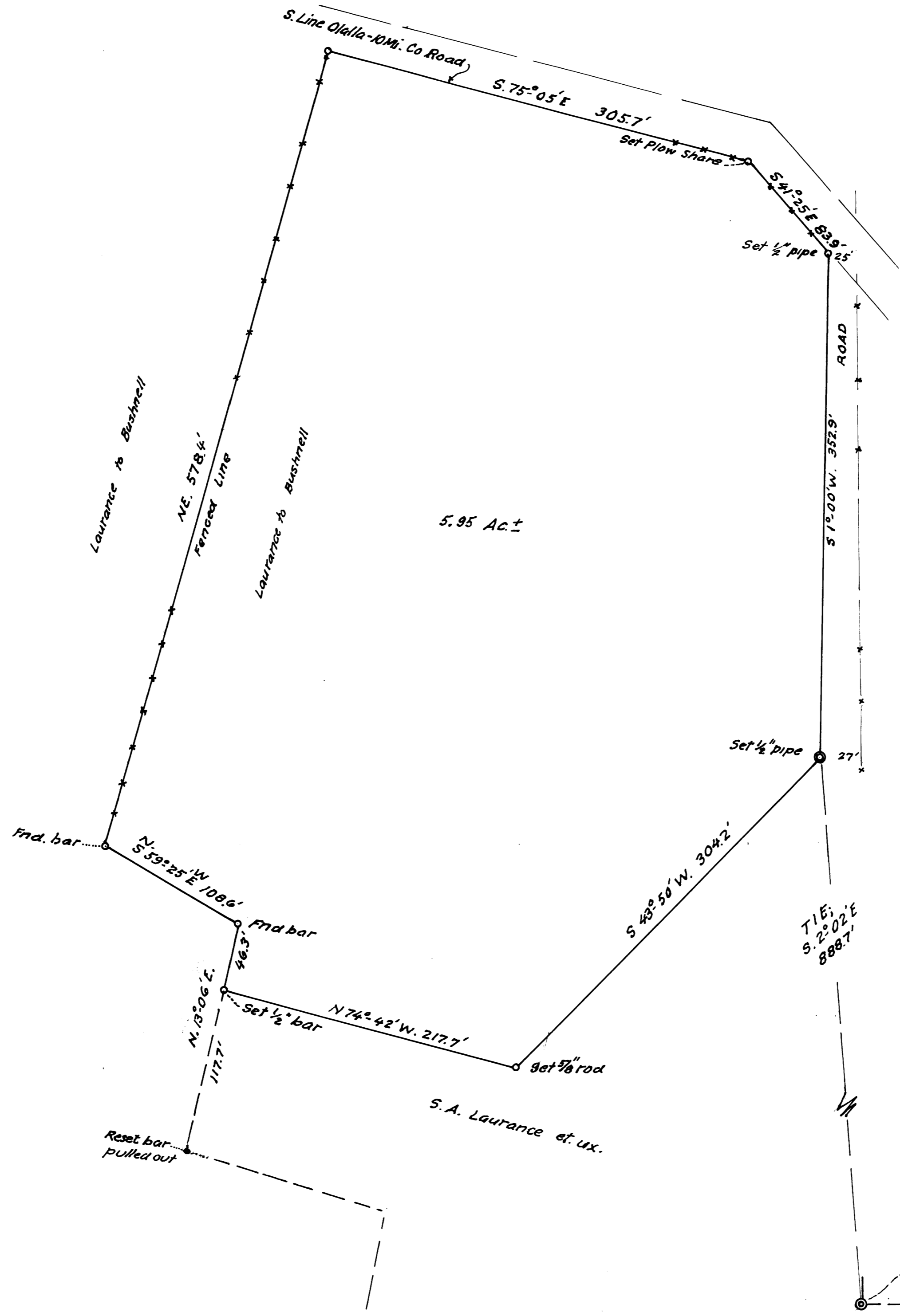


FILED
RECEIVED

JUL 22 1971

COUNTY SURVEYOR
DOUGLAS COUNTY, ORE.

MAP FILE M 43 - 11



S.A. & HESTER LAURANCE, HSBND & WF
TO DELMER & NELLIE BUSHNELL "

ACREAGE IN SEC. 7, T29S; R7W; W.M;
DOUGLAS COUNTY, ORE.

JULY, 1971 AB. 1" = 60 ft.

S.W. Cor.
Dan'l. Wells D.L.C 39
T.29S; R.7 W; W.M.

COUNTY SURVEYORS FILE
DO NOT REMOVE FROM OFF

FILE M 43 - 11