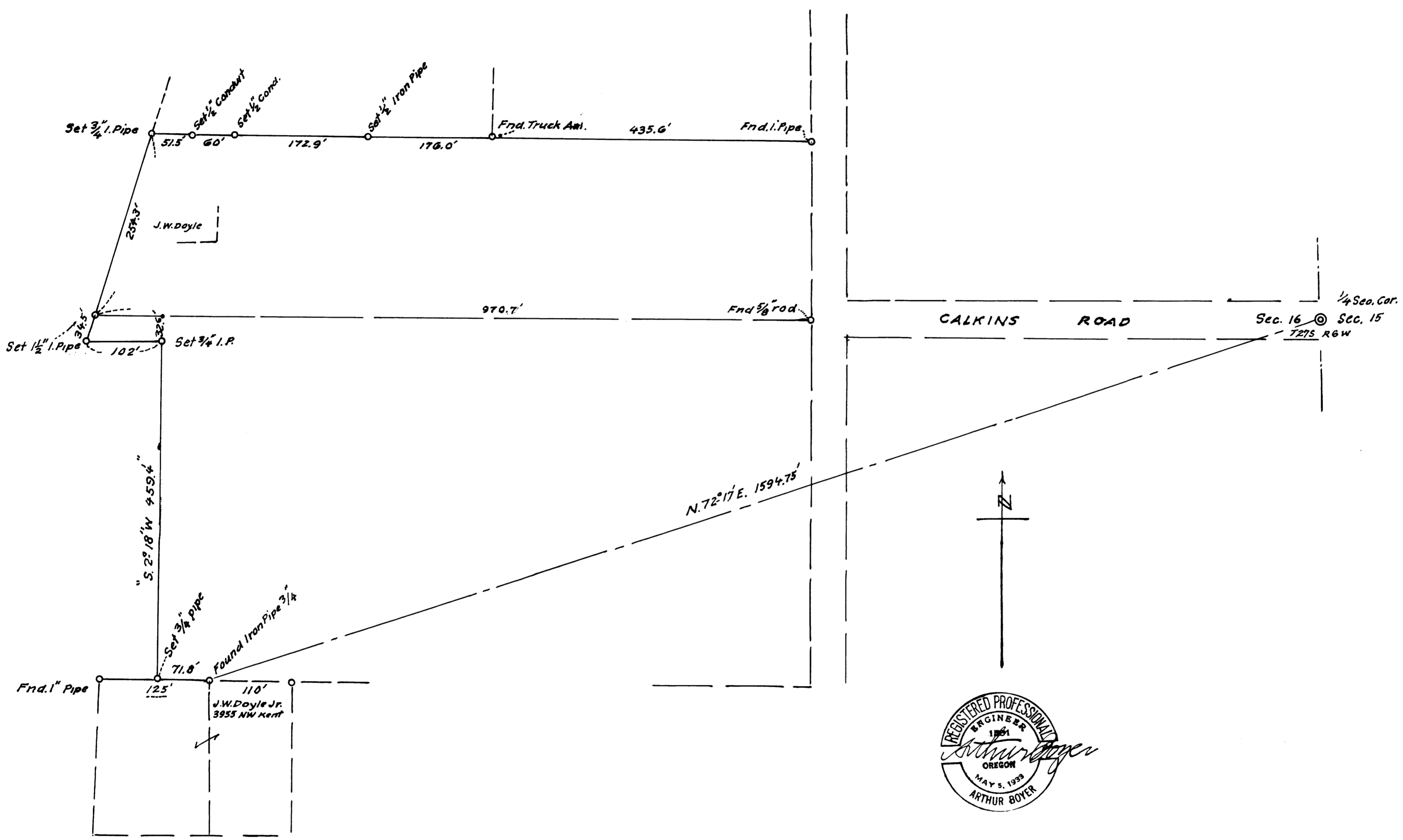


FILED *LL*
 RECEIVED
 JUL 22 1971
 COUNTY SURVEYOR
 DOUGLAS COUNTY, ORE.

M 43-10



J. W. DOYLE & WF
 3995 N.W. CALKINS ROAD, ROSEBURG, ORE
 RETRACEMENT DOYLES PROPERTY LINES IN
 E-1/2 SEC. 16, T. 27S., R. 6W; WIL. MER.,
 DOUGLAS COUNTY, ORE.
 JUNE, 1971 AB. 1"=100 ft

COUNTY SURVEYORS FILE DATA
 DO NOT REMOVE FROM OFFICE

M 43-10