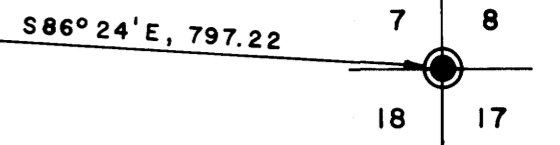
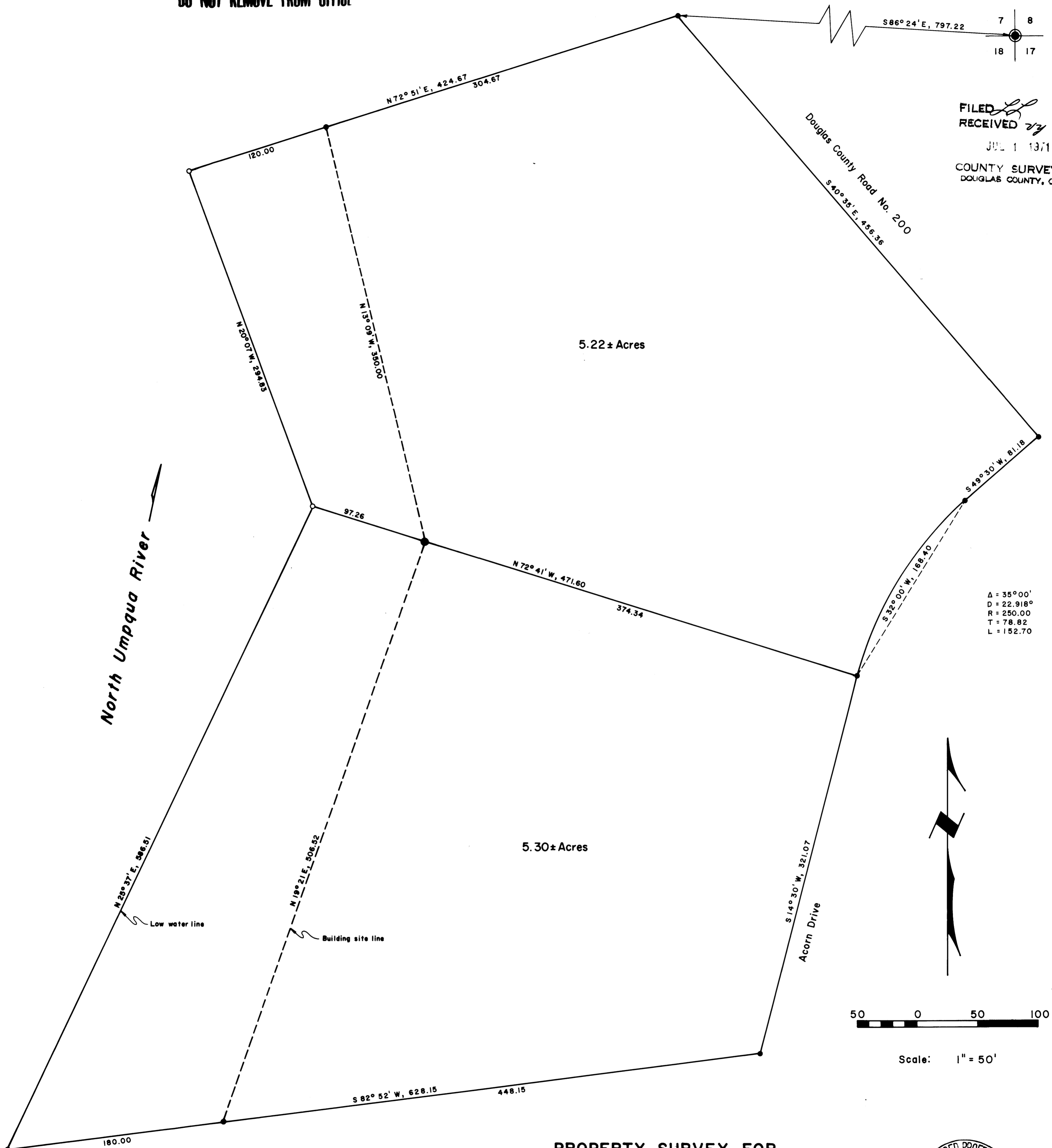


COUNTY SURVEYORS FILE DATA
DO NOT REMOVE FROM OFFICE



FILED
RECEIVED
JUL 1 1971
COUNTY SURVEYOR
DOUGLAS COUNTY, ORE.



North Umpqua River

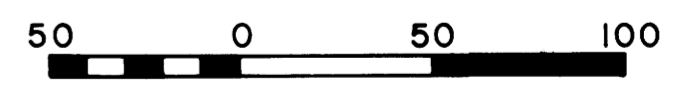
N 23° 37' E, 586.81

Low water line

N 19° 21' E, 506.82

Building site line

Δ = 35°00'
D = 22.918°
R = 250.00
T = 78.82
L = 152.70



Scale: 1" = 50'

- Corner found, 5/8" iron rod
- Corner set, 5/8" iron rod
- Corner computed, not set

PROPERTY SURVEY FOR
R. H. FRANKS & SONS

Surveyed by Dick Grant
June 17, 1971
T26S R4W

