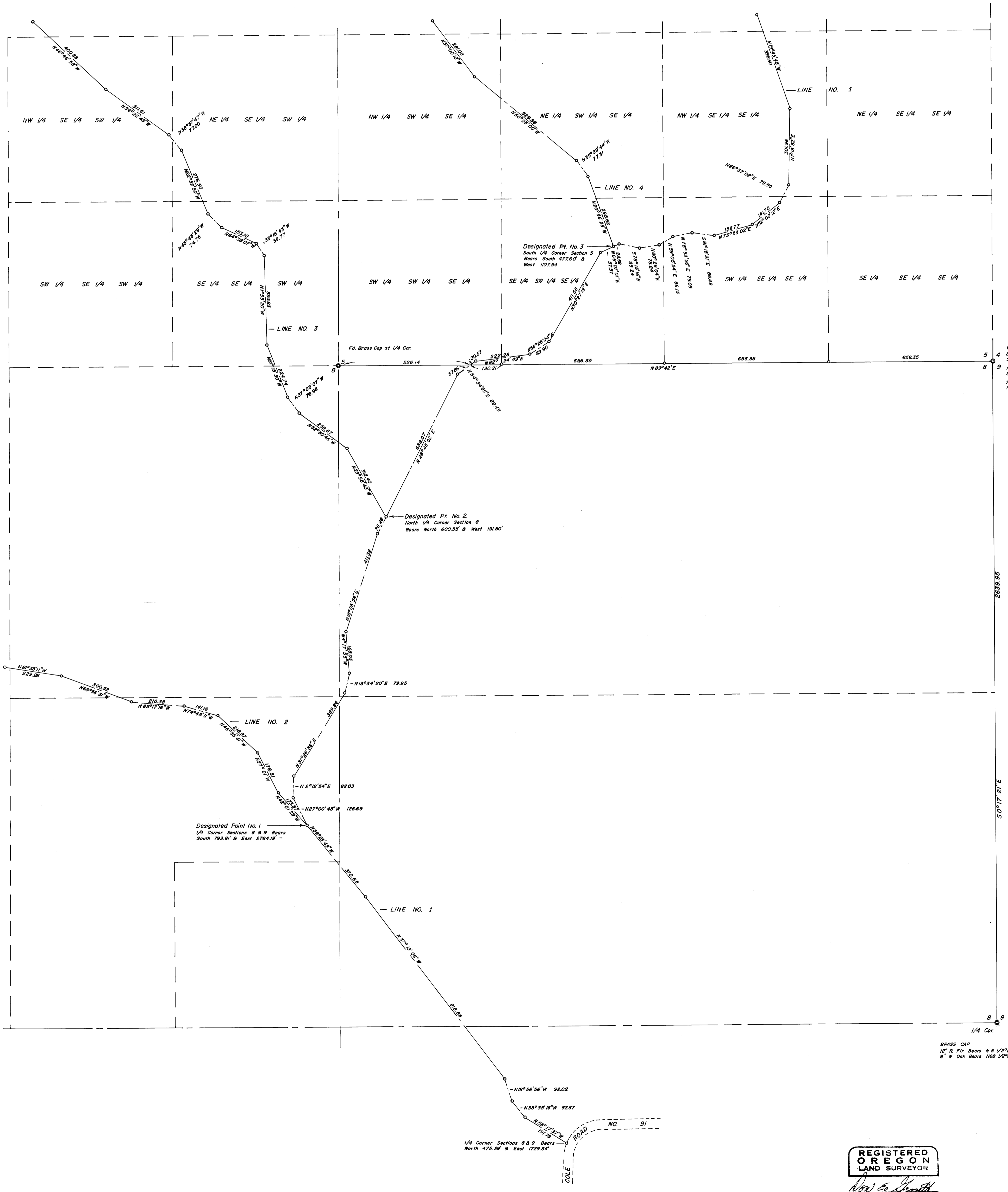


**SURVEY IN SECTIONS 5 & 8, TOWNSHIP 25 SOUTH, RANGE 6 WEST, WILLAMETTE MERIDIAN**  
Surveyed for Ray Murdock by Don E. Garrett  
November 1970

Scale 1" = 200'

o - Set 5/8" I. Rod  
Bearings are based on a Solar Observation taken June 17, 1969. (M 38-16)  
Centerlines shown on map are centerlines of 60' wide road easements.



REGISTERED  
OREGON  
LAND SURVEYOR

*Don E. Garrett*  
JULY 7, 1961  
DON E. GARRETT  
544