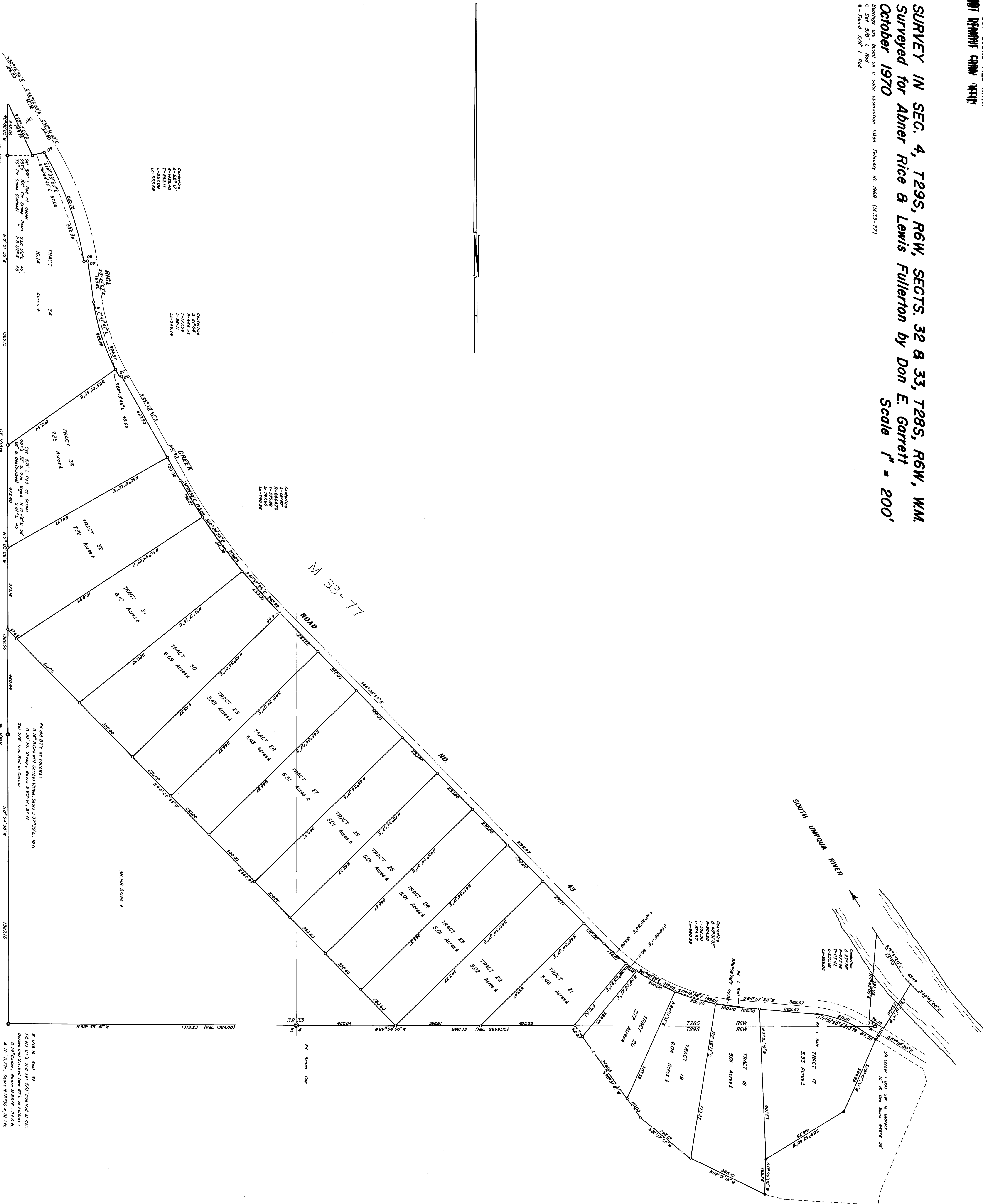


COUNTY SUPERVISORS FILE DATA  
DO NOT REMOVE FROM OFFICE

**SURVEY IN SEC. 4, T29S, R6W, SECTS. 32 & 33, T28S, R6W, W.M.  
Surveyed for Abner Rice & Lewis Fullerton by Don E. Garrett  
October 1970**

Boundaries are based on a solar observation taken February 10, 1968 (M.S. 77)  
o - Set 5/8" I. Rod  
• - Found 5/8" I. Rod



REGISTERED  
LAND SURVEYOR  
DON E. GARRETT  
544

COUNTY SUPERVISORS FILE DATA  
DO NOT REMOVE FROM OFFICE

*[Handwritten signature]*