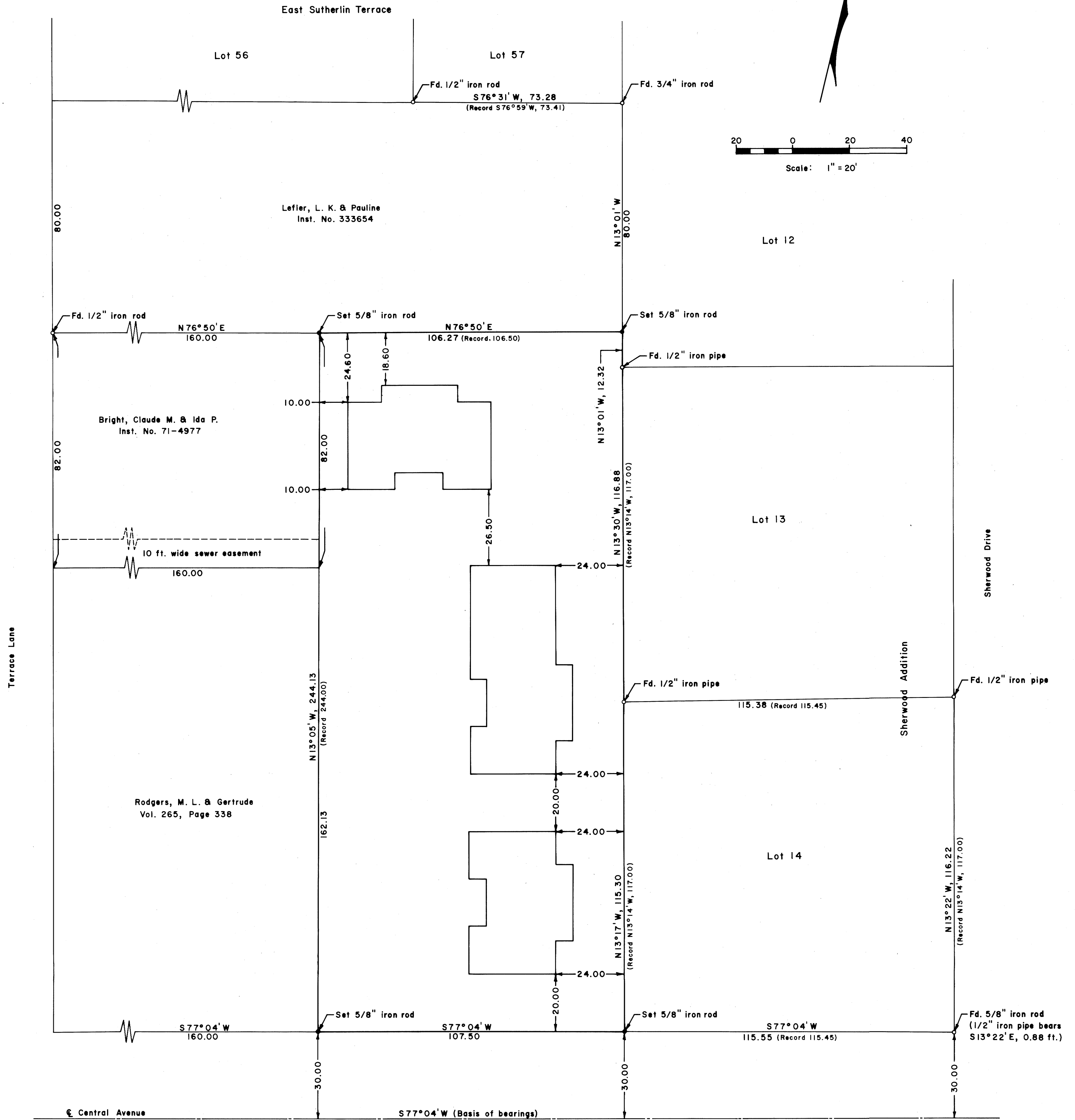


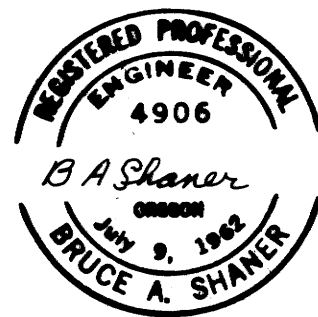
COUNTY SURVEYORS FILE DATA
DO NOT REMOVE FROM OFFICE

FILED
RECEIVED
NOV 30 1972
COUNTY SURVEYOR
DOUGLAS COUNTY, ORE.



PROPERTY LINE SURVEY AND BUILDING LOCATION
 IN LOTS 7 & 8, EAST SUTHERLIN TERRACE
 NE 1/4 SW 1/4, SEC. 16, T. 25 S., R. 5 W., W. M.
 SUTHERLIN, OREGON

For: Leon Turner
 By: Shaner Engineering



I, Bruce A. Shaner, hereby certify that I have surveyed the parcel shown on this map, and found the apartments thereon to be located completely within the property lines as shown as of October 31, 1972.

B. A. Shaner
 Bruce A. Shaner

COUNTY SURVEYORS FILE DATA
 DO NOT REMOVE FROM OFFICE

MAP FILE M-42-79