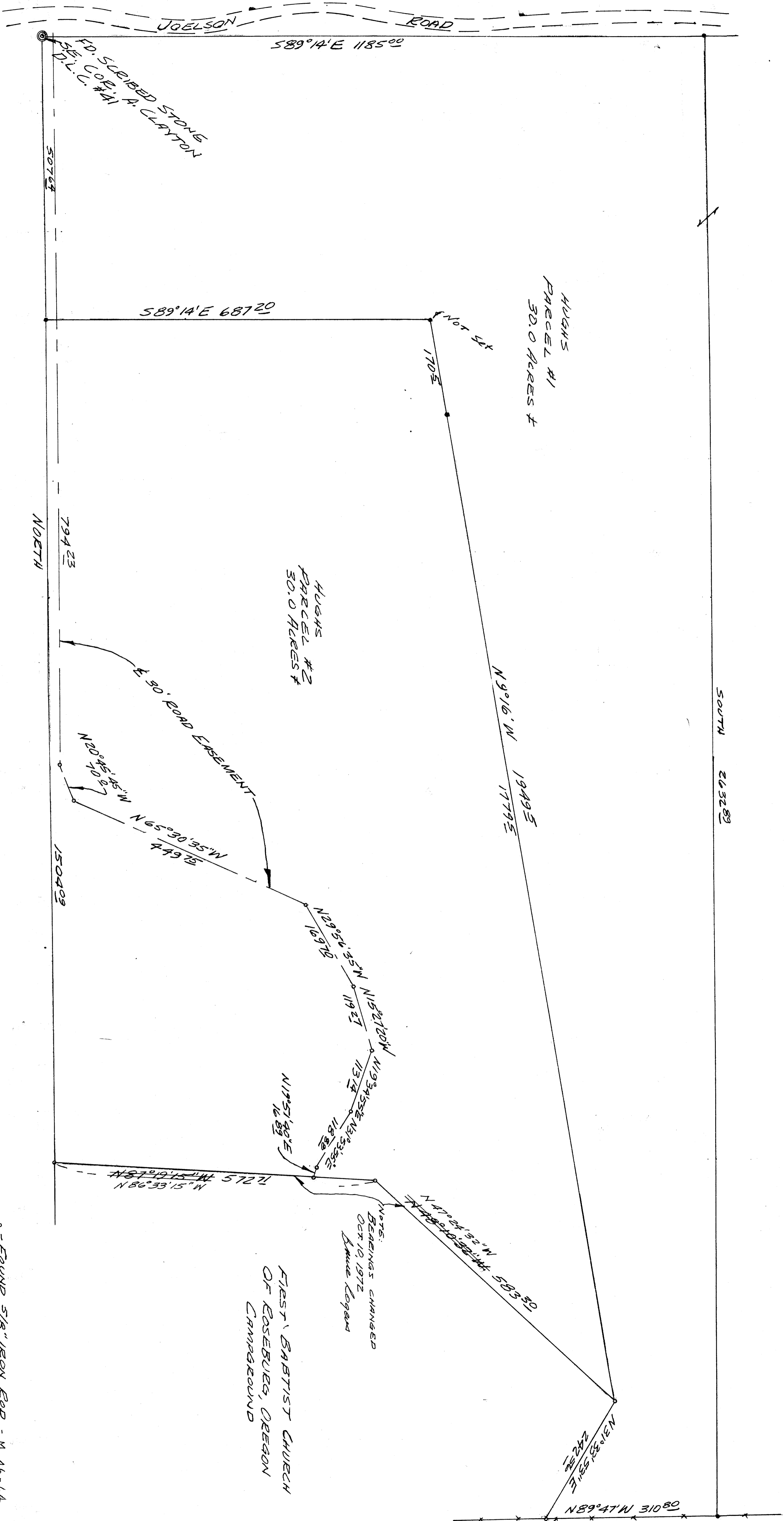
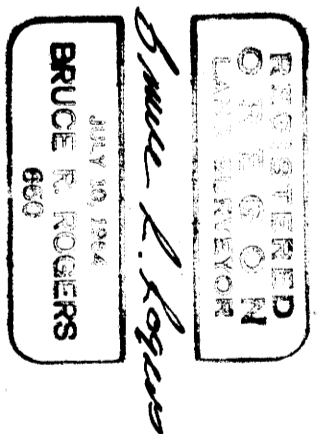


SURVEY FOR DEED DESCRIPTIONS  
IN SECTION 35 T.25S, R.7W N.M.  
AND SECTION 2, T.26S, R.7W N.M.  
BY GEORGE HIGHS  
OCT. 1972  
1<sup>st</sup> 100'

COUNTY SUPERVISORS FILE HERE  
DO NOT REMOVE FROM OFFICE

FILED  
OCT 6 1972  
COUNTY SUPERVISOR  
SOUWAS COUNTY, ORE.



NOTE:  
BEARINGS CHANGED  
OCT 10 1972  
Bruce Rogers

FIRST BAPTIST CHURCH  
OF ROSEBURG, OREGON  
CAMPGROUND

• FOUND 5/8" IRON ROD - M 46-64  
• SET 5/8" IRON ROD

COUNTY SUPERVISORS FILE HERE  
DO NOT REMOVE FROM OFFICE