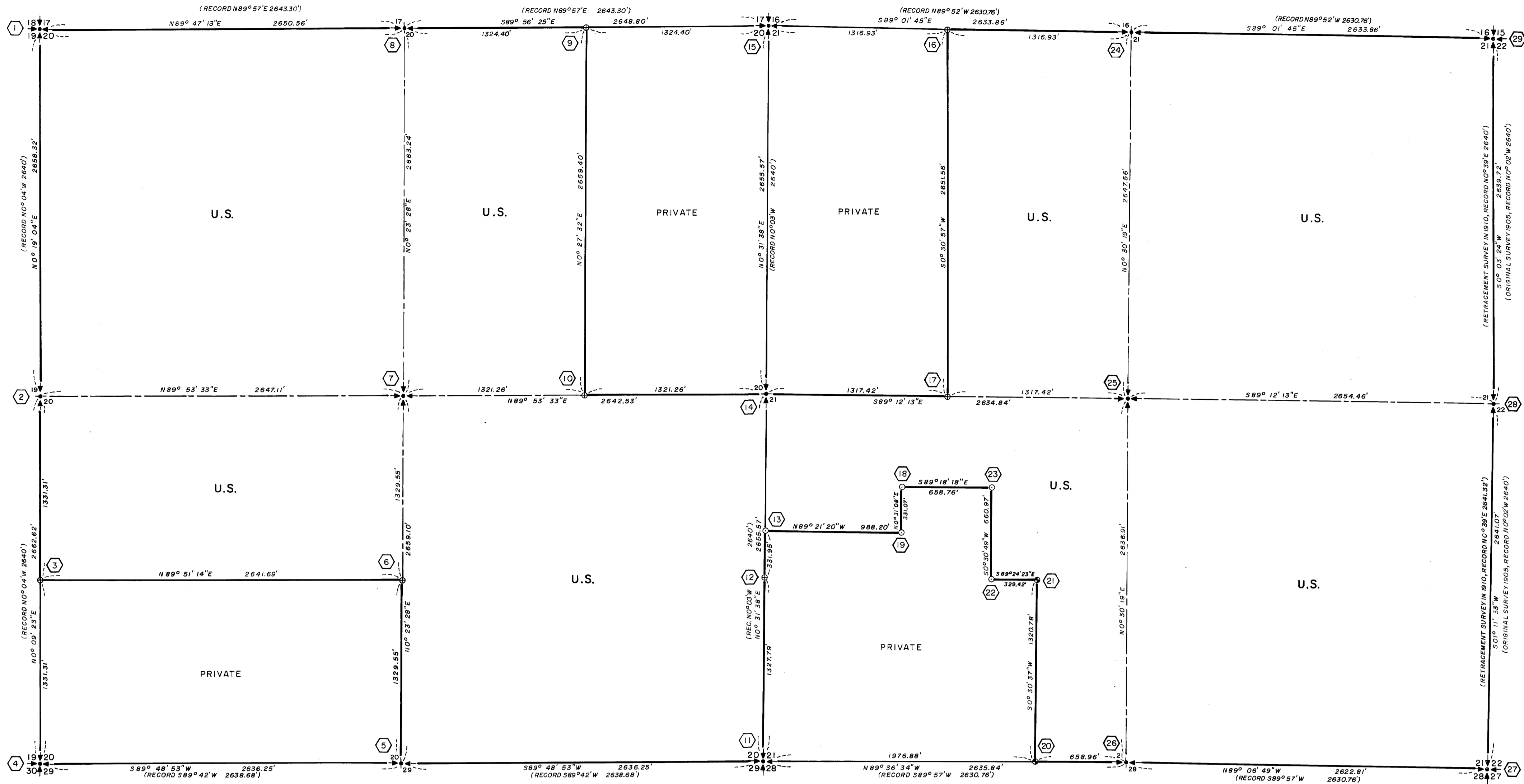


22



I, J. A. HOFFBUHR, A REGISTERED LAND SURVEYOR IN THE STATE OF OREGON, HEREBY CERTIFY THAT THIS PLAT AND THE NOTES HEREON, OR ATTACHED, ARE A CORRECT REPRESENTATION OF A SURVEY I PERFORMED DURING JULY AND AUGUST, 1970, FOR THE U.S. FOREST SERVICE, IN ACCORDANCE WITH THE STATUTES OF THE STATE OF OREGON AND THE ARTICLES OF MY CONTRACT.

J. A. Hoffbuhr
J. A. HOFFBUHR
REGISTERED LAND SURVEYOR
OREGON LICENSE 222

NOTE:
ALL MONUMENTS SET ON THIS SURVEY SET ON 2" X 30" GALV. IRON PIPE WITH METAL FLANGE WELDED TO BOTTOM OF PIPE.
ALL BEARING TREE DIMENSIONS INDICATE THE DIAMETER OF THE TREE AT SCRIBED AREA.
ALL BEARING TREE DISTANCES AND BEARINGS ARE FROM THE CENTER OF THE MONUMENT TO THE CENTER OF THE TREE.

DESCRIPTION OF MONUMENTS AND ACCESSORY TIES

- 1 SECTION CORNER COMMON TO SECTIONS 17 & 18, 19 & 20
Found 1" iron pipe with a 2 1/2" Brass Disk stamped as shown.
FROM WHICH BEARS:
ORIGINAL BEARING TREE, NOW A 39" RED FIR, SHOWS GOOD SCAR BEARS N40 1/2° E 60.4'
A 10" RED FIR SCRIBES VISIBLE, BEARS N59° E 33.2'
ORIGINAL BEARING TREE NOW A 52" RED FIR, SHOWS GOOD SCAR BEARS S 12° E 24.6'
A 6" RED FIR, RECENT SCRIBES VISIBLE, BEARS S82 1/2° W 7.5'
ORIGINAL BEARING TREE, NOW A 42" RED FIR, SCRIBES VISIBLE, BEARS N43 1/2° W 16.6'
- 2 1/4 SECTION CORNER BETWEEN SECTIONS 19 & 20
Found 6" X 8" Stone 10" above ground and firmly in place with 1/4" Scribble on West face.
Set a 2" iron pipe with a 2 1/2" Brass Disk stamped as shown.
FROM WHICH BEARS:
A 6" DOUG. FIR SCRIBED 1/4 S 20 BT, BEARS N30° W 21.5'
A 7" DOUG. FIR SCRIBED 1/4 S 20 BT, BEARS S 52° E 9.7'
- 3 S 1/16 SECTION CORNER BETWEEN SECTIONS 19 & 20.
Set a 2" iron pipe with a 2 1/2" Brass Disk stamped as shown.
FROM WHICH BEARS:
A 12" DOUG. FIR SCRIBED S 1/16 S 19 BT, BEARS N76 1/2° W 13.8'
A 9" DOUG. FIR SCRIBED S 1/16 S 20 BT, BEARS S 9° E 9.5'
- 4 SECTION CORNER COMMON TO SECTIONS 19 & 20, 29 & 30.
Found a 1" iron pipe with a 2 1/2" Brass Disk stamped as shown.
Also found original stone beside monument.
FROM WHICH BEARS:
A 10" CEDAR SCRIBES VISIBLE, BEARS N 59° E 20.1'
A 12" DOUG. FIR SCRIBES VISIBLE, BEARS S89° E 8.2'
A 12" PINE BLAZED BEARS S90° E 4.5'
A 10" DOUG. FIR SCRIBES VISIBLE, BEARS S59° W 15.8'
A 19" DOUG. FIR SCRIBES VISIBLE, BEARS N48° W 8.7'
- 5 1/4 SECTION CORNER BETWEEN SECTIONS 20 & 29
Set a 2" iron pipe with a 2 1/2" Brass Disk stamped as shown.
FROM WHICH BEARS:
A 10" WHITE FIR SCRIBED 1/4 S 20 BT, BEARS N 4° E 13.7'
A 6" ASH SCRIBED 1/4 S 20 BT, BEARS S 20° W 14.5'
- 6 C-S 1/16 SECTION CORNER, SECTION 20.
Set 2" iron pipe with a 2 1/2" Brass Disk stamped as shown.
FROM WHICH BEARS:
A 8" WHITE FIR SCRIBED 1/16 S 20 BT, BEARS N 1/2° W 20.8'
A 6" RED FIR SCRIBED 1/16 S 20 BT, BEARS S 86 1/2° E 32.6'
- 7 C 1/4 SECTION CORNER, SECTION 20.
Set a 2" iron pipe with a 2 1/2" Brass Disk stamped as shown.
FROM WHICH BEARS:
A 4" PONDEROSA PINE SCRIBED C 1/4 S 20 BT, BEARS N 26 1/2° W 9.9'
A 8" PONDEROSA PINE SCRIBED C 1/4 S 20 BT, BEARS S 52° W 4.3'
- 8 1/4 SECTION CORNER BETWEEN SECTIONS 17 & 20
Found a 1" iron pipe with a 2 1/2" Brass Disk stamped as shown.
FROM WHICH BEARS:
ORIGINAL BEARING TREE A 41" DOUG. FIR, SHOWS GOOD SCAR BEARS N41 1/2° E 5.3'
ORIGINAL BEARING TREE A 38" CEDAR, OLD SCAR VISIBLE BEARS S 43° W 31.4'
- 9 E 1/16 SECTION CORNER BETWEEN SECTIONS 17 & 20.
Set a 2" iron pipe with a 2 1/2" Brass Disk stamped as shown.
FROM WHICH BEARS:
A 10" HEMLOCK SCRIBED E 1/16 S 17 BT, BEARS N 28° E 50.9'
A 6" MADRONE SCRIBED E 1/16 S 20 BT, BEARS S 29° E 28.2'
- 10 C-E 1/16 SECTION CORNER, SECTION 20.
Set a 2" iron pipe with a 2 1/2" Brass Disk stamped as shown.
FROM WHICH BEARS:
A 6" RED FIR SCRIBED C E 1/16 S 20 BT, BEARS N 8° E 29.0'
A 6" RED FIR SCRIBED C E 1/16 S 20 BT, BEARS S 17° W 41.0'
- 11 S-E SECTION CORNER, SECTION 20.
Found a 1" iron pipe with a Brass Disk stamped as shown.
FROM WHICH BEARS:
A 7" DOUG. FIR BEARING TREE, RECENT SCRIBES VISIBLE, BEARS N 51° E 33.8'
A 10" DOUG. FIR BEARING TREE, RECENT SCRIBES VISIBLE, BEARS S 95° E 23.5'
ORIGINAL BEARING TREE A 18" CEDAR, SHOWS SCAR, BEARS S 48° W 47.8'
ORIGINAL BEARING TREE A 28" DOUG. FIR, SHOWS SCAR, BEARS N 83 1/2° W 53.5'
- 12 S 1/16 SECTION CORNER BETWEEN SECTIONS 20 & 21
Set a 2" iron pipe with a 2 1/2" Brass Disk stamped as shown.
FROM WHICH BEARS:
A 14" RED FIR SCRIBED S 1/16 S 21 BT, BEARS N 24° E 9.6'
A 7" MAPLE SCRIBED S 1/16 S 20 BT, BEARS S 66 1/2° W 11.3'
- 13 S-N-S 1/256 SECTION CORNER BETWEEN SECTION 20 & 21.
Set a 2" iron pipe with a 2 1/2" Brass Disk stamped as shown.
FROM WHICH BEARS:
A 9" CHINQUAPIN SCRIBED 1/256 BT, BEARS S 80 1/2° E 17.0'
A 6" SUGAR PINE SCRIBED 1/256 BT, BEARS S 6° W 38.2'
- 14 1/4 SECTION CORNER BETWEEN SECTION 20 & 21
Set a 2" iron pipe with a 2 1/2" Brass Disk stamped as shown.
FROM WHICH BEARS:
A 12" WHITE FIR SCRIBED 1/4 S 21 BT, BEARS N 74° E 22.3'
A 10" WHITE FIR SCRIBED 1/4 S 20 BT, BEARS N 63° W 27.3'
- 15 SECTION CORNER COMMON TO SECTIONS 16 & 17, 20 & 21
Found a 1" iron pipe with a 2 1/2" Brass Disk stamped as shown.
FROM WHICH BEARS:
ORIGINAL BEARING TREE A 48" DOUG. FIR, SHOWS GOOD SCAR, BEARS N 44° E 49.5'
A 6" WHITE FIR RECENTLY SCRIBED, BEARS S 31° E 33.8'
A 12" YELLOW PINE RECENTLY SCRIBED, BEARS S 12° W 44.3'
ORIGINAL BEARING TREE A 18" CEDAR, SHOWS SCAR BEARS N 29° W 32.3'
- 16 W 1/16 SECTION CORNER, SECTION 21.
Set a 2" iron pipe with a 2 1/2" Brass Disk stamped as shown.
FROM WHICH BEARS:
A 4" WHITE FIR SCRIBED W 1/16 S 21 BT, BEARS N 12° W 13.7'
A 6" MADRONE SCRIBED W 1/16 S 21 BT, BEARS S 49° W 11.7'
- 17 C-W 1/16 SECTION CORNER, SECTION 21.
Set a 2" iron pipe with a 2 1/2" Brass Disk stamped as shown.
FROM WHICH BEARS:
A 9" CHINQUAPIN SCRIBED W 1/16 S 21 BT, BEARS N 42° E 19.0'
A 14" CEDAR SCRIBED W 1/16 S 21 BT, BEARS S 50° W 11.7'
- 18 C-E-NW-SW 1/256 SECTION CORNER, SECTION 21.
Set a 2" iron pipe with a 2 1/2" Brass Disk stamped as shown.
FROM WHICH BEARS:
A 6" RED FIR SCRIBED 1/256 BT, BEARS N 59° W 15.4'
A 6" WHITE FIR SCRIBED 1/256 BT, BEARS N 63° E 16.9'
- 19 SE-NW-SW 1/256 SECTION CORNER, SECTION 21.
Set a 2" iron pipe with a 2 1/2" Brass Disk stamped as shown.
FROM WHICH BEARS:
A 16" DOUG. FIR SCRIBED 1/256 BT, BEARS N 72° W 12.7'
A 6" MAPLE SCRIBED 1/256 BT, BEARS N 39° E 31.8'
- 20 E-W 1/64 SECTION CORNER BETWEEN SECTIONS 21 & 28
Set a 2" iron pipe with a 2 1/2" Brass Disk stamped as shown.
FROM WHICH BEARS:
A 10" WHITE FIR SCRIBED 1/64 S 21 BT, BEARS N 64 1/2° E 57.5'
A 6" CHINQUAPIN SCRIBED 1/64 S 21 BT, BEARS S 19° E 71.5'
- 21 C-E-SW 1/64 SECTION CORNER, SECTION 21
Set a 2" iron pipe with a 2 1/2" Brass Disk stamped as shown.
FROM WHICH BEARS:
A 6" DOUG. FIR SCRIBED 1/64 BT, BEARS S 55° E 19.5'
A 6" WHITE FIR SCRIBED 1/64 BT, BEARS N 77° E 10.0'
- 22 C-W-E-SW 1/256 SECTION CORNER, SECTION 21.
Set a 2" iron pipe with a 2 1/2" Brass Disk stamped as shown.
FROM WHICH BEARS:
A 16" DOUG. FIR SCRIBED 1/256 BEARS S 88 1/2° E 20.6'
A 10" DOUG. FIR SCRIBED 1/256 BEARS S 21 1/2° E 13.3'
- 23 C-W-NE-SW 1/256 SECTION CORNER, SECTION 21.
Set a 2" iron pipe with a 2 1/2" Brass Disk stamped as shown.
FROM WHICH BEARS:
A 10" RED FIR SCRIBED 1/256 BT, BEARS N 71 1/2° W 29.0'
A 6" MADRONE SCRIBED 1/256 BT, BEARS S 19° E 10.0'
- 24 1/4 SECTION CORNER BETWEEN SECTIONS 16 & 21.
Set a 2" iron pipe with a 2 1/2" Brass Disk stamped as shown.
FROM WHICH BEARS:
A 12" WHITE FIR SCRIBED 1/4 S 21 BT, BEARS S 40° W 40.0'
A 6" WHITE FIR SCRIBED 1/4 S 16 BT, BEARS N 5° E 34.0'
- 25 C-1/4 SECTION CORNER, SECTION 21.
Set a 2" iron pipe with a 2 1/2" Brass Disk stamped as shown.
FROM WHICH BEARS:
A 12" RED FIR SCRIBED C 1/4 S 21 BT, BEARS S 1° E 22.0'
A 10" WHITE FIR SCRIBED C 1/4 S 21 BT, BEARS N 3° W 12.8'
- 26 1/4 SECTION CORNER BETWEEN SECTIONS 21 & 28
Found a 1" iron pipe with a 2 1/2" Brass Disk stamped as shown.
FROM WHICH BEARS:
A 26" CEDAR WITH SCAR VISIBLE, BEARS S 53° W 12.6'
A 39" CEDAR WITH SCAR VISIBLE, BEARS N 45° E 26.7'
- 27 SECTION CORNER COMMON TO SECTIONS 21 & 22, 27 & 28.
Found a 1" iron pipe with a 2 1/2" Brass Disk stamped as shown.
FROM WHICH BEARS:
A 30" DOUG. FIR, SHOWS OLD SCAR, BEARS N 30° E 18.7'
A 23" WHITE FIR, SHOWS OLD SCAR, BEARS S 63 1/2° E 11.5'
A 24" DOUG. FIR, NEW SCRIBES VISIBLE, BEARS S 15 1/2° W 11.4'
A 5" STUMP REMAINS WITH SCRIBES VISIBLE, BEARS S 73 1/2° W 20.5'
A 14" DOUG. FIR, OLD SCAR VISIBLE, BEARS N 53 3/4° W 18.9'
- 28 1/4 SECTION CORNER BETWEEN SECTIONS 21 & 22.
Found a 1" iron pipe with a 2 1/2" Brass Disk stamped as shown.
FROM WHICH BEARS:
A 26" DOUG. FIR, SHOWS OLD SCAR, BEARS N 79° E 61.4'
A 28" CEDAR, OLD SCAR VISIBLE, BEARS S 67 1/2° W 28.5'
- 29 SECTION CORNER COMMON TO SECTIONS 15 & 16, 21 & 22
Found a 1" iron pipe with a 2 1/2" Brass Disk stamped as shown.
FROM WHICH BEARS:
A 7" RED FIR SHOWS RECENT SCAR, BEARS N 21° E 8.9'
A 48" FIR SHOWS SCAR, BEARS N 31° E 86.0'
A 12" DOUG. FIR SHOWS RECENT SCRIBES, BEARS S 86 1/2° E 38.0'
A 8" RED FIR SHOWS RECENT SCRIBES, BEARS N 83° W 9.7'
A 40" SUGAR PINE SHOWS SCRIBES, BEARS S 64° E 34.3'

COUNTY SURVEYORS FILE DATA
DO NOT REMOVE FROM OFFICE

REGISTERED
OREGON
LAND SURVEYOR
J. A. Hoffbuhr
NOVEMBER 7, 1967
J. A. HOFFBUHR
222

PLAT OF SURVEY
LOCATED IN
SECTIONS 20 AND 21, T. 29 S., R. 1 W., W.M.
DOUGLAS COUNTY, OREGON
FOR
THE UNITED STATES DEPARTMENT OF AGRICULTURE
USMPQA NATIONAL FOREST
CONTRACT NO. 002848
J.A. HOFFBUHR, REG. L.S., MEDFORD, OREGON
SCALE: 1" = 500' SEPT. 3, 1970
BASIS OF BEARING BY SOLAR OBSERVATION
TILLER LAND SURVEY NO. 4
FIELD BOOKS NO. 3 & 4 OF 4

SURVEY NARRATIVE TO COMPLY WITH PARAGRAPH 209.250
OREGON REVISED STATUTES

SURVEY FOR: The United States Department of Agriculture
Umpqua National Forest
Contract No. 002848
P. O. Box 1008
Roseburg, Oregon 97470

LOCATION: Survey located in Sections 20 and 21, Township
29 South, Range 1 West, Willamette Meridian,
Douglas County, Oregon.

PURPOSE: To re-establish the lost corners along the
perimeter boundaries of Sections 20 and 21,
also to subdivide the interior of both sections
for the purpose of establishing the boundary
line as indicated on the attached map.

PROCEDURE: Two Tellurometer Control Base Stations were
established on ridge points Southeasterly of the Umpqua River.
Eccentric points were established near each of the Section and
Quarter Corners. The distances of the spider lines were determined
by double tellurometer distances and the angles were measured with
a T-2 Wild Theodolite. The angles were measured by turning two
direct and two indirects of the angle and the horizon closure.

An interior traverse was run using a Distomat to tie between
the Tellurometer Stations. The result was excellent.

A double traverse line was run from each of the eccentric
points to the corners for ties. The distances between the found
corners were obtained by coordinate inverse computations.

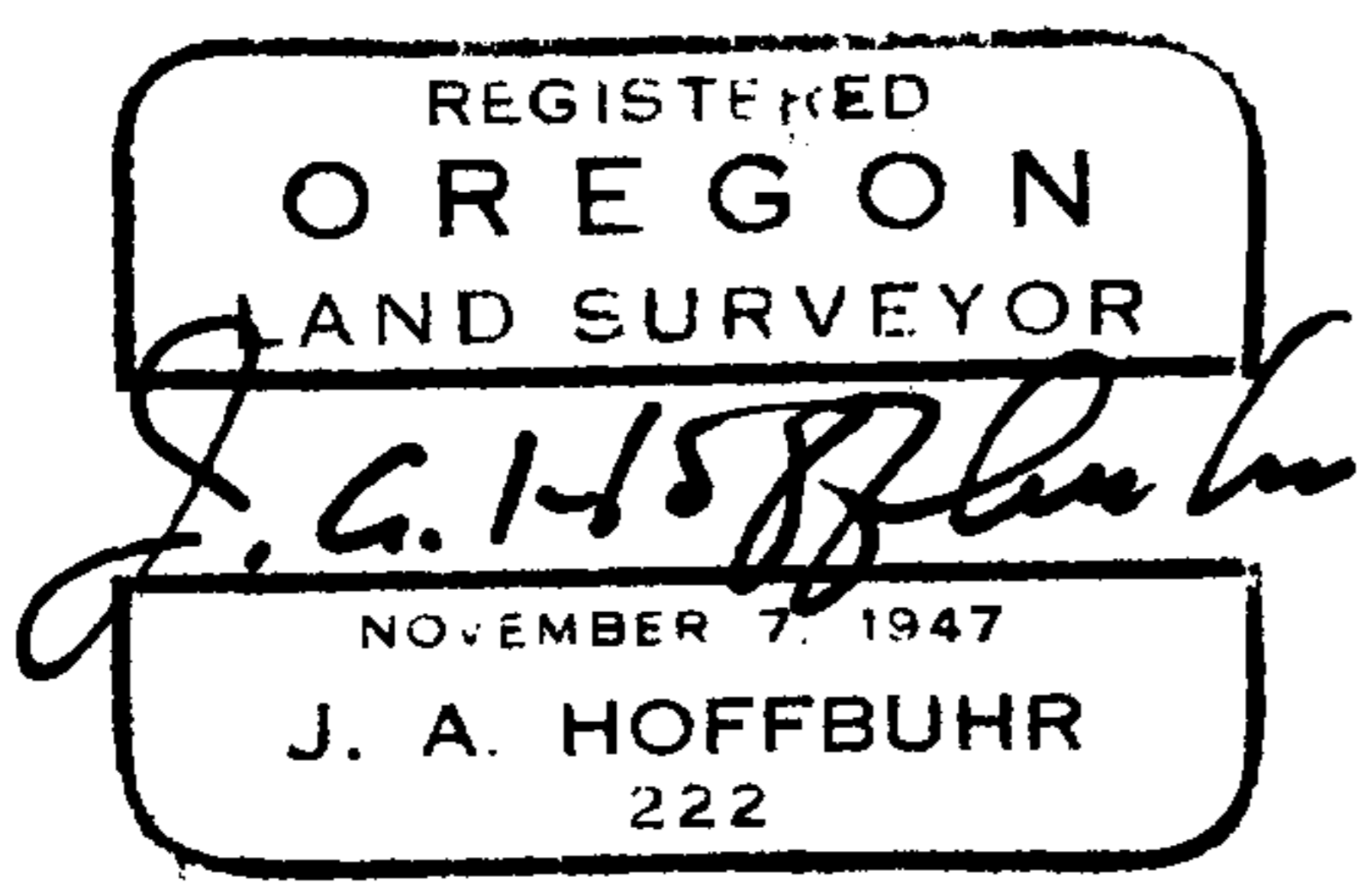
The bearings for this survey are derived from 3 sets of solar
observations, each set being composed of one direct and one indirect
solar sighting with the T-2 Theodolite. The difference between the
three sets was negligible, therefore, the mean of the three sets was
used for the purpose of this survey.

The information regarding the status of each corner found and
those that were re-established is shown individually on the attached
certified copy of the survey.

The heavy lines on the maps were the lines designated as
boundary lines between private and government ownership. These
lines were posted and marked in accordance with the United States
Forest Service requirements.

The bearing trees both old and new were also marked with the
United States Forest Service Bearing Tree Marking Plate in accordance
with the Forest Service requirements.

October 14, 1970



J. A. Hoffbuhr
Registered Land Surveyor

FILED
RECEIVED

OCT 15 1970

COUNTY SURVEYOR
DOUGLAS COUNTY, ORE.
55/168

Map File M 42-7