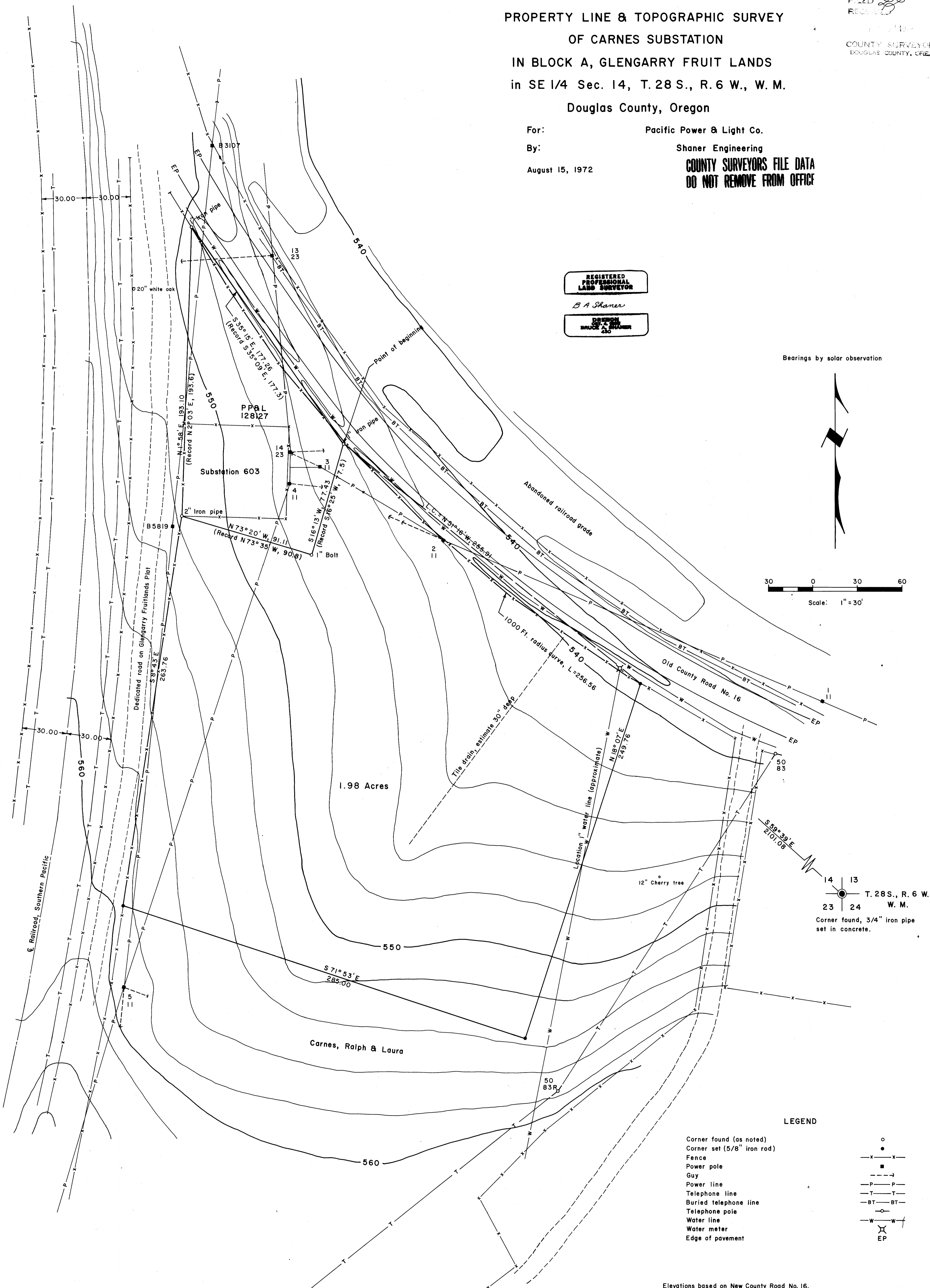


PROPERTY LINE & TOPOGRAPHIC SURVEY
 OF CARNES SUBSTATION
 IN BLOCK A, GLENGARRY FRUIT LANDS
 in SE 1/4 Sec. 14, T. 28 S., R. 6 W., W. M.
 Douglas County, Oregon

FILED
 RECEIVED
 COUNTY SURVEYOR
 DOUGLAS COUNTY, ORE.

For: Pacific Power & Light Co.
 By: Shaner Engineering
 August 15, 1972

COUNTY SURVEYORS FILE DATA
 DO NOT REMOVE FROM OFFICE



REGISTERED
 PROFESSIONAL
 LAND SURVEYOR
 B. A. Shaner
 REGISTERED
 PROFESSIONAL
 LAND SURVEYOR
 BRUCE A. SHANER
 430

Bearings by solar observation



Scale: 1" = 30'

14 | 13
 23 | 24
 T. 28 S., R. 6 W.,
 W. M.
 Corner found, 3/4" iron pipe
 set in concrete.

LEGEND

- Corner found (as noted)
- Corner set (5/8" iron rod)
- Fence
- Power pole
- Guy
- Power line
- Telephone line
- Buried telephone line
- Telephone pole
- Water line
- Water meter
- Edge of pavement

Elevations based on New County Road No. 16.
 TBM No. 1, Elev. 547.00, a spike on base of
 Power Pole 3
 11

COUNTY SURVEYORS FILE DATA
 DO NOT REMOVE FROM OFFICE

MAP FILE M.42 - 65

MAP FILE M.42 - 65