

SURVEY IN SECTIONS 29 & 30, T30S, R3W, W.M.  
 Surveyed for Phil Washburn and Robert Murray by Victor M. McLind  
 May 1972

Bearings Based on Solar Observation on April 25, 1972  
 o ~ Indicates Set  $\frac{3}{8}$ " I. Ppc

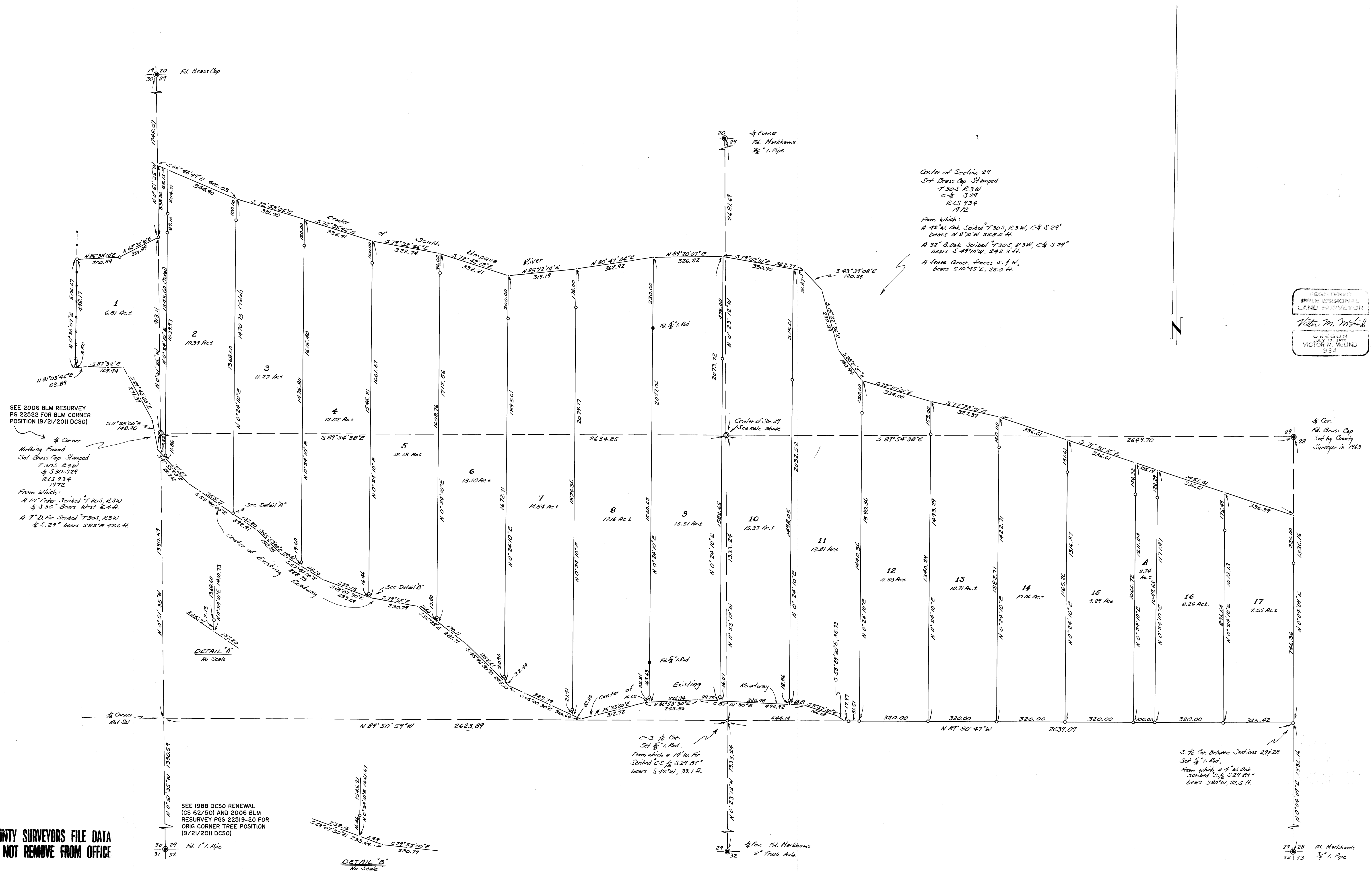
Scale: 1" = 200'

COUNTY SURVEYORS FILE DATA  
 DO NOT REMOVE FROM OFFICE

FILED *[Signature]*  
 RECEIVED

JUN 20 1972

COUNTY SURVEYOR  
 DOUGLAS COUNTY, OHIO



Center of Section 29  
 Set Brass Cap Stamped  
 T30S R3W  
 C & S 29  
 R.S. 934  
 1972

From Which:  
 A 42" Oak Scribed T30S, R3W, C & S 29  
 bears N 87° 10' W, 252.0 H.  
 A 38" Oak Scribed T30S, R3W, C & S 29  
 bears S 49° 10' W, 242.3 H.  
 A fence corner, fences S. & W,  
 bears S 10° 45' E, 25.0 H.

REGISTERED  
 PROFESSIONAL  
 LAND SURVEYOR  
*Victor M. McLind*  
 CREATION  
 JULY 17, 1969  
 VICTOR M. McLIND  
 934

SEE 2006 BLM RESURVEY  
 PG 22522 FOR BLM CORNER  
 POSITION (9/21/2011 DCSO)

1/4 Corner  
 Nothing Found  
 Set Brass Cap Stamped  
 T30S R3W  
 C & S 29  
 R.S. 934  
 1972

From Which:  
 A 10" Cedar Scribed T30S, R3W  
 & S 30° Bears West 6.4 H.  
 A 9" D. Fir Scribed T30S, R3W  
 & S. 29° bears S 82° E 42.6 H.

DETAIL A  
 No Scale

DETAIL B  
 No Scale

C-3 1/2 Cor.  
 Set  $\frac{3}{8}$ " I. Ppc.  
 From which a 1 1/2" Fir  
 Scribed C-S  $\frac{1}{2}$  S 29 BT  
 bears S 42° W, 33.1 H.

S. 1/2 Cor. Between Sections 29 & 28  
 Set  $\frac{3}{8}$ " I. Ppc.  
 From which a 4" Oak  
 scribed S-S  $\frac{1}{2}$  S 29 BT  
 bears S 80° W, 22.5 H.

COUNTY SURVEYORS FILE DATA  
 DO NOT REMOVE FROM OFFICE