

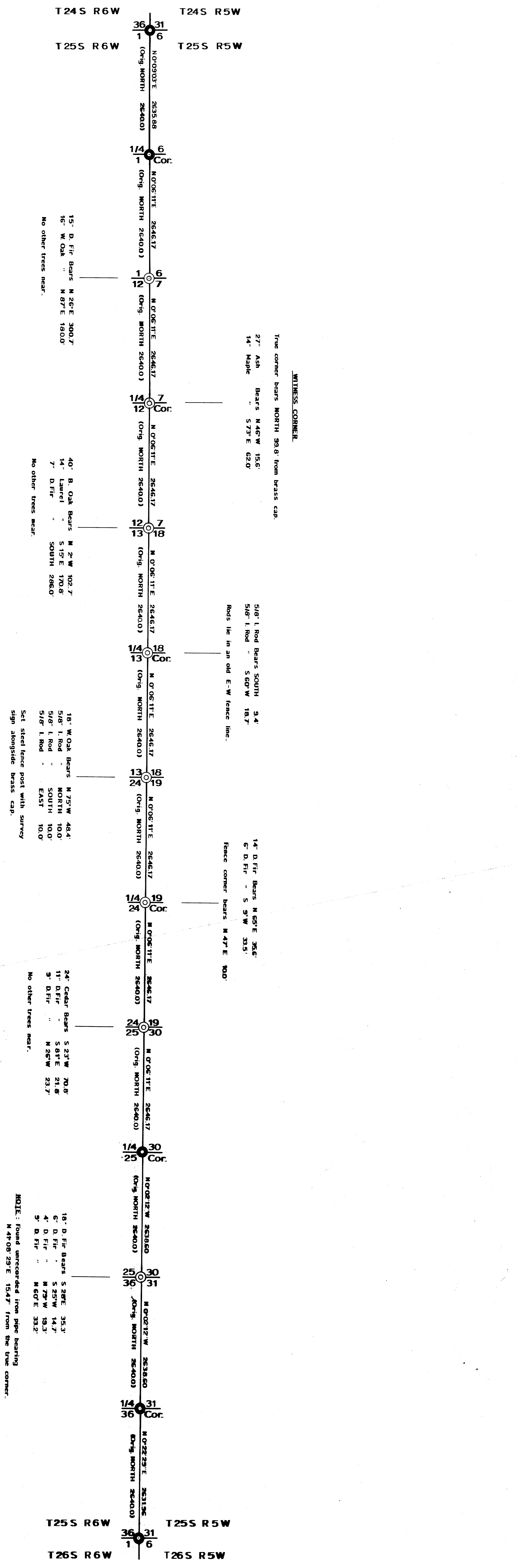
COUNTY SUPERVISORS FILE DATA
DO NOT REMOVE FROM OFFICE

FILED
RECEIVED
JUN 13 1972

COUNTY SURVEYOR
DOUGLAS COUNTY, OREGON

RESURVEY OF A PORTION OF THE RANGE LINE BETWEEN T.25 S., R.5 W. & R.6 W., W.M.

- Found Brass Cap
- ⊙ Set Brass Cap



Z

TRUE NORTH

Bearings and distances shown are true.
Survey based on the Oregon State Plane
Coordinate System, South Zone, using
triangulation stations Willie, Wahl, Wilbur
and Oakland.

COUNTY SURVEYOR'S OFFICE
DOUGLAS COUNTY, OREGON
T.25 S., R.5 & 6 W., W.M.
Surveyed for Douglas County
May, 1972 Scale 1" = 1000'
Francis L. Ingram
County Surveyor

REGISTERED
PROFESSIONAL
LAND SURVEYOR
Francis L. Ingram
FRANCIS L. INGRAM
COUNTY SURVEYOR

COUNTY SUPERVISORS FILE DATA
DO NOT REMOVE FROM OFFICE