

COUNTY SURVEYORS FILE DATA
DO NOT REMOVE FROM OFFICE

SURVEY IN SEC.S 22 & 27, T27S, R6W. W.M. DOUGLAS COUNTY, OREGON.

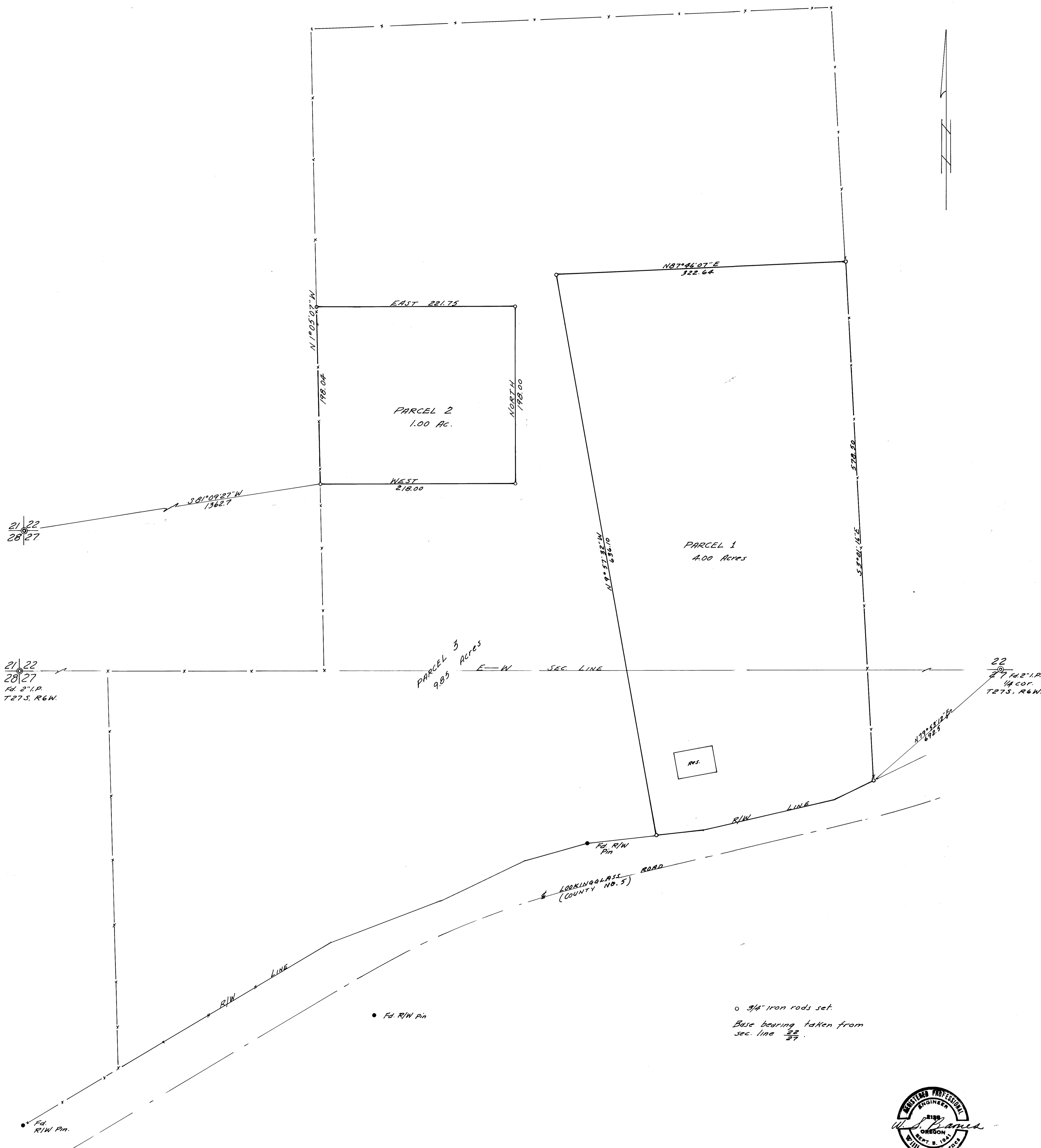
SURVEYED FOR - SEEK, INC.
SURVEYED BY - W.S. BARNES ENGR. SERV.

JAN. 1972.
SCALE 1" = 50'

FILED
RECEIVED

MAR 13 1972.

COUNTY SURVEYOR
DOUGLAS COUNTY, OREGON



21 | 22
28 | 27

21 | 22
28 | 27
Fd. 2" I.P.
T27S, R6W.

22
27 Fd. 2" I.P.
1/4 COR.
T27S, R6W.

o 3/4" Iron rods set.
Base bearing taken from
sec. line 22/27.



COUNTY SURVEYORS FILE DATA
DO NOT REMOVE FROM OFFICE

MAP FILE M 42-58

MAP FILE M 42-58