

COUNTY SURVEYORS FILE DATA  
DO NOT REMOVE FROM OFFICE

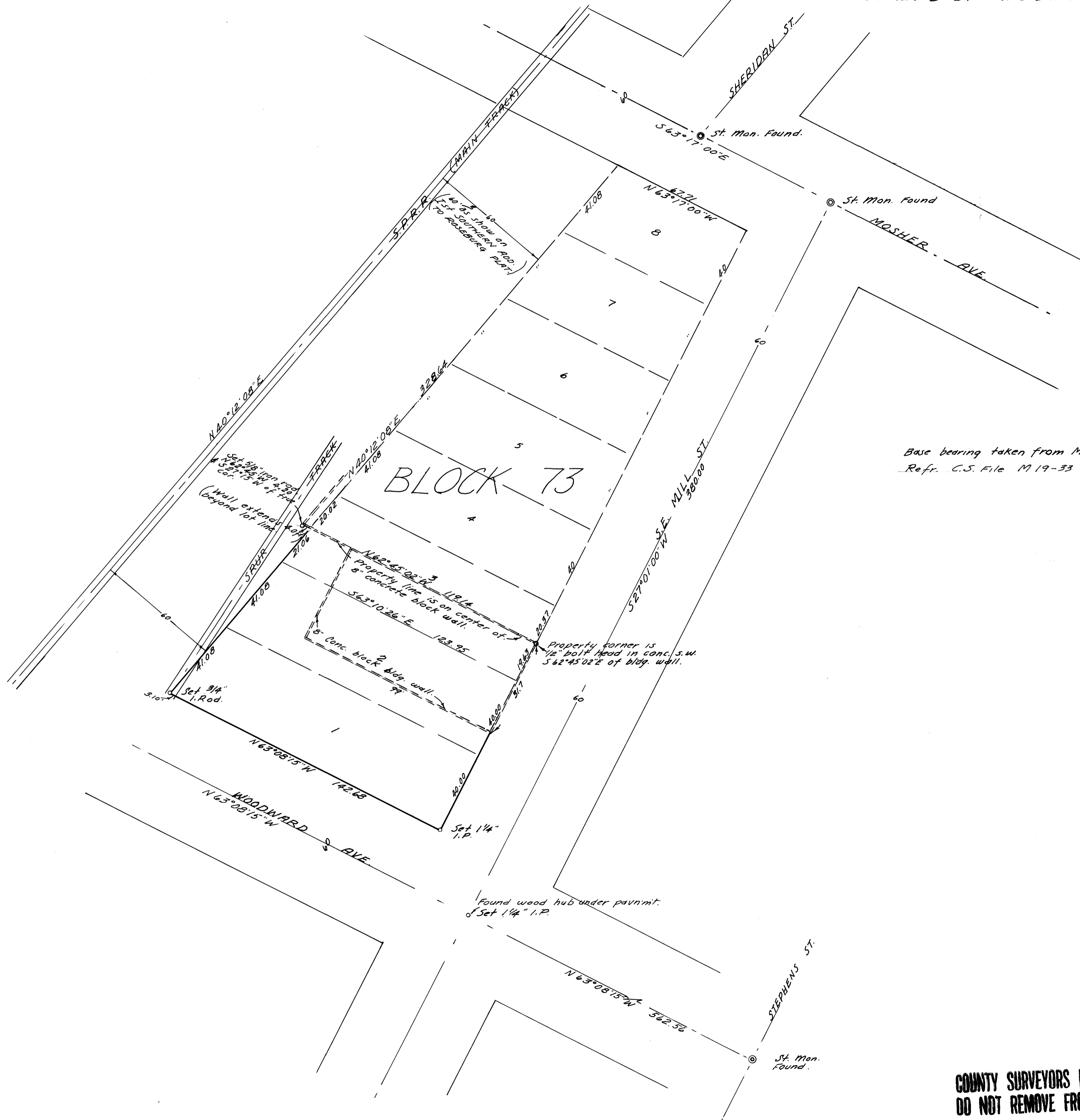
SURVEY FOR DEED DESCRIPTION  
IN LOTS 1, 2 & 3, BLOCK 73,  
1st SOUTHERN ADD. TO ROSEBURG  
DOUGLAS COUNTY, ORE.

SURVEYED FOR - SOUTHERN ORE. LOG SCALING BU.  
SURVEYED BY - W.S. BARNES  
JAN. 1972  
SCALE 1"=30'

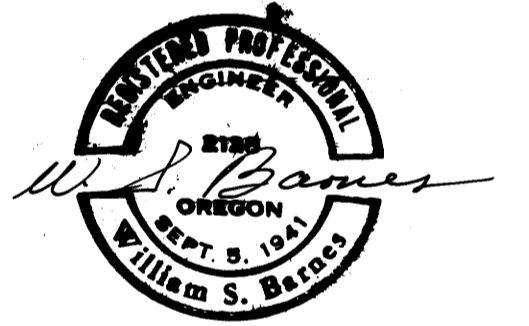
FILED  
RECEIVED

FEB 8 1972.

COUNTY SURVEYOR  
DOUGLAS COUNTY, ORE.



Base bearing taken from Moshier Ave.  
Refr. C.S. File M 19-33



COUNTY SURVEYORS FILE DATA  
DO NOT REMOVE FROM OFFICE