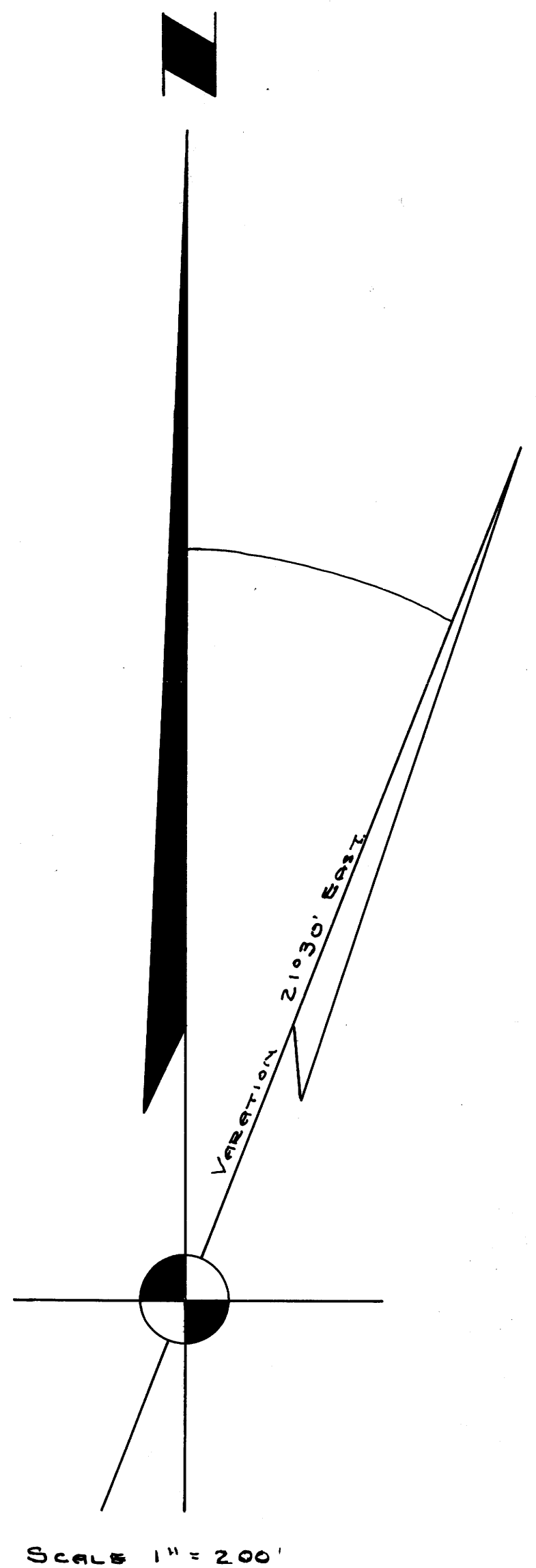
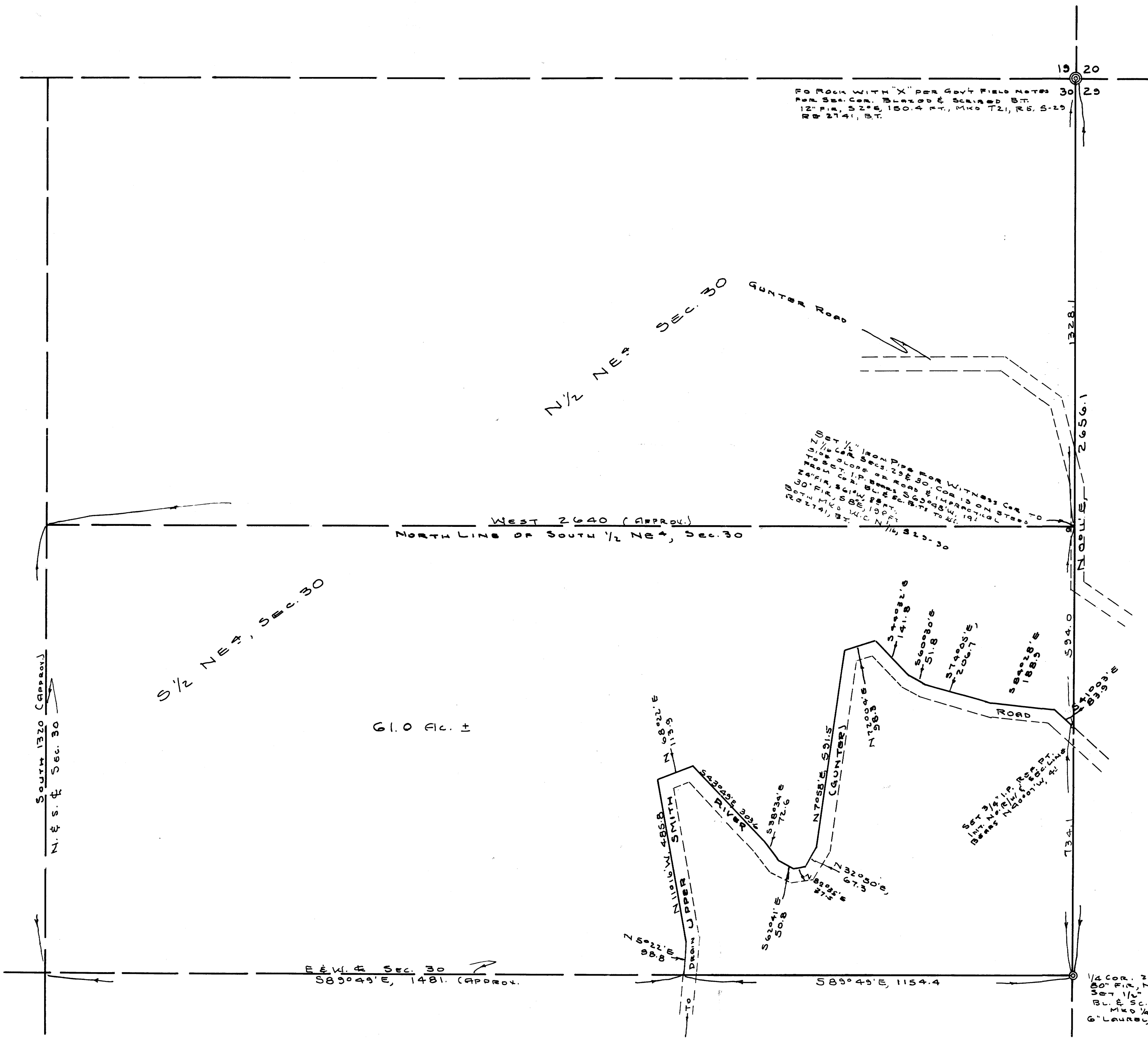


COUNTY SURVEYORS FILE DATA  
DO NOT REMOVE FROM OFFICE



GRANT & EVANS, ENGINEERS  
ROSEBURG, OREGON  
SURVEY FOR DEED DESCRIPTION  
IN THE NE 1/4 SEC. 30, T21S, R5W.  
DOUGLAS COUNTY, OREGON



SURVEYED, SEPTEMBER, 1951, BY  
A.R. EVANS, REG. PROFESSIONAL ENGINEER

1/4 COR. 29-30. FD STAMP OF O.B.T.  
50" P.I.R. N66°00' 31 L.S.  
30" 1/2" I.P. FOR COR. 1" 6" x 36" CEDAR STAKE ALUMINUM  
B.L. & SC. IN B.T. 54" P.I.R. N110W, 688 FT.  
M.K. 1/4 S. 23° 15' 27.41" B.T.  
G. LAUREN, 52 1/2' 202 FT. M.K. 1/4 S. 23° 15' 27.41" B.T.

COUNTY SURVEYORS FILE DATA  
DO NOT REMOVE FROM OFFICE