

SURVEY IN SECTIONS 32 & 33, TOWNSHIP 26 SOUTH, RANGE 3 WEST, WILLAMETTE MERIDIAN  
 Surveyed for Adrian Standley by Don E. Garrett  
 January 1971  
 -SET 5/8" I. ROD

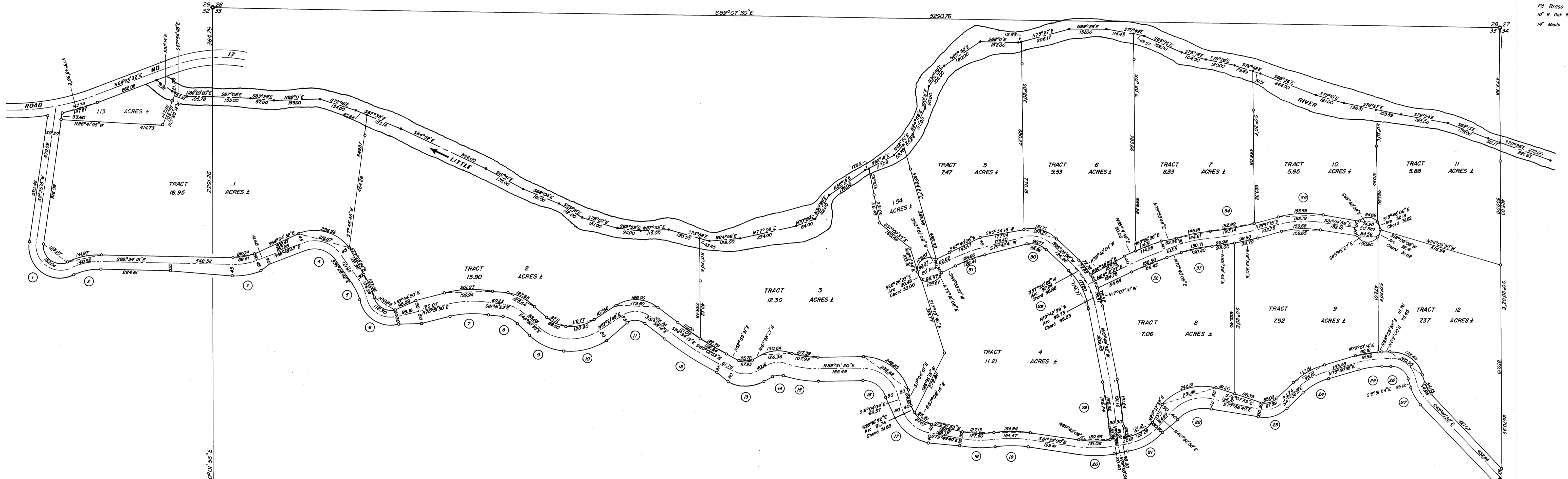
FILED  
 RECEIVED  
 FEB 3 1972  
 COUNTY SURVEYOR  
 DOUGLAS COUNTY, ORE.

Scale 1" = 200'

SEE M-39-73 FOR LOCATION OF LITTLE RIVER  
 ROAD & BASE OF BEARINGS.

Fd. Brass Cap  
 15" Oak (Clump) Bears S46°W 193 Lks.  
 17" W. Oak " S71°E 188 Lks.

Fd. Brass Cap  
 10" B. Oak Bears N12 1/2°E 182.5'  
 14" Maple " N30°W 204.2'



|   |  |
|---|--|
| 1   | 2  |
| A-104°04'40"<br>R-256.00<br>T-188.84<br>L-177.20<br>L-176.55<br>S53°40'05"E | A-87°27'10"<br>R-266.10<br>T-185.00<br>L-177.50<br>L-176.28<br>N77°42'10"E |

|  |   |   |  |
|--|---|---|--|
| 3  | 4   | 5   | 6  |
| A-22°35'58"<br>R-254.65<br>T-200.89<br>L-105.44<br>L-104.79<br>N80°01'46"E | A-74°45'31"<br>R-130.22<br>T-79.43<br>L-94.39<br>L-94.05<br>S73°46'28"E | A-24°15'44"<br>R-223.21<br>T-77.91<br>L-94.39<br>L-94.05<br>S84°00'50"E | A-91°55'12"<br>R-102.00<br>T-102.41<br>L-160.43<br>L-143.77<br>S58°10'54"E |

|  |  |  |  |   |   |
|--|--|--|--|---|---|
| 7  | 8  | 9  | 10   | 11  | 12  |
| A-22°26'47"<br>R-483.65<br>T-508.00<br>L-181.04<br>L-180.64<br>N67°05'15"E | A-35°20'46"<br>R-156.92<br>T-300.00<br>L-266.91<br>L-266.59<br>S64°00'50"E | A-38°52'23"<br>R-180.23<br>T-262.83<br>L-262.79<br>L-262.59<br>S68°40'46"E | A-37°55'18"<br>R-253.12<br>T-276.63<br>L-263.34<br>L-245.44<br>N70°04'26"E | A-70°38'57"<br>R-100.00<br>T-72.89<br>L-123.09<br>L-123.07<br>S87°18'15"E | A-10°57'17"<br>R-1273.24<br>T-122.09<br>L-245.44<br>L-243.07<br>S37°56'50"E |

|  |  |   |  |  |  |
|--|--|---|--|--|--|
| 13   | 14   | 15  | 16   | 17   | 18   |
| A-58°09'06"<br>R-10.18<br>T-32.24<br>L-102.01<br>N88°29'52"E | A-47°20'34"<br>R-408.11<br>T-42.39<br>L-89.81<br>N83°52'38"E | A-19°44'35"<br>R-363.19<br>T-63.50<br>L-125.15<br>S80°36'22"E | A-72°34'36"<br>R-146.51<br>T-157.54<br>L-165.55<br>S44°16'52"E | A-61°45'36"<br>R-150.78<br>T-130.17<br>L-162.53<br>S46°04'56"E | A-17°04'<br>R-458.37<br>T-78.79<br>L-156.53<br>L-146.89<br>S88°51'40"E |

|   |   |   |   |   |   |
|---|---|---|---|---|---|
| 19  | 20  | 21  | 22  | 23  | 24  |
| A-10°21'40"<br>R-458.37<br>T-78.79<br>L-156.53<br>L-146.89<br>S88°51'40"E | A-10°21'40"<br>R-458.37<br>T-78.79<br>L-156.53<br>L-146.89<br>S88°51'40"E | A-10°21'40"<br>R-458.37<br>T-78.79<br>L-156.53<br>L-146.89<br>S88°51'40"E | A-53°10'56"<br>R-458.37<br>T-78.79<br>L-156.53<br>L-146.89<br>N67°52'50"E | A-53°10'56"<br>R-458.37<br>T-78.79<br>L-156.53<br>L-146.89<br>N67°52'50"E | A-53°10'56"<br>R-458.37<br>T-78.79<br>L-156.53<br>L-146.89<br>N67°52'50"E |

|  |  |  |   |  |  |
|--|--|--|---|--|--|
| 25   | 26   | 27   | 28  | 29   | 30   |
| A-54°55'02"<br>R-100.52<br>T-282.84<br>L-282.84<br>N74°00'48"E | A-26°42'20"<br>R-286.48<br>T-280.00<br>L-282.84<br>N60°29'26"E | A-14°09'22"<br>R-409.26<br>T-500.00<br>L-101.12<br>N80°52'19"E | A-74°08'06"<br>R-143.54<br>T-73.73<br>L-153.07<br>S53°52'57"E | A-27°44'36"<br>R-452.40<br>T-282.84<br>L-282.84<br>N67°52'50"E | A-27°44'36"<br>R-452.40<br>T-282.84<br>L-282.84<br>N67°52'50"E |

|  |   |   |  |   |
|--|---|---|--|---|
| 31   | 32  | 33  | 34   | 35  |
| A-5°38'54"<br>R-909.86<br>T-94.25<br>L-188.28<br>N80°00'05"W | A-33°16'26"<br>R-38.31<br>T-103.00<br>L-158.37<br>N58°27'42"W | A-58°11'21"<br>R-119.38<br>T-66.45<br>L-121.24<br>W75°11'38"W | A-12°09'04"<br>R-432.40<br>T-282.84<br>L-159.85<br>S69°38'09"W | A-6°25'38"<br>R-432.40<br>T-282.84<br>L-159.85<br>N67°52'50"E |

1/4 Cor. Fd. Brass Cap  
 Stamped Do. Co. Surveyor 1966.

1/4 Cor. Fd. Brass Cap  
 16" Cedar Bears N11°W 22.2'  
 15" D. Fir " N25°E 50.7'

REGISTERED  
 PROFESSIONAL  
 LAND SURVEYOR  
 Don E. Garrett  
 OREGON  
 JULY 14, 1963  
 DON E. GARRETT  
 544