

COUNTY SURVEYORS FILE DATA
DO NOT REMOVE FROM OFFICE

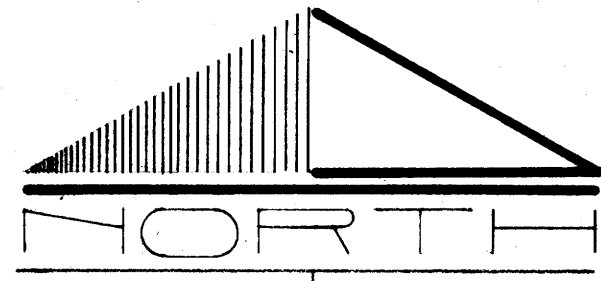
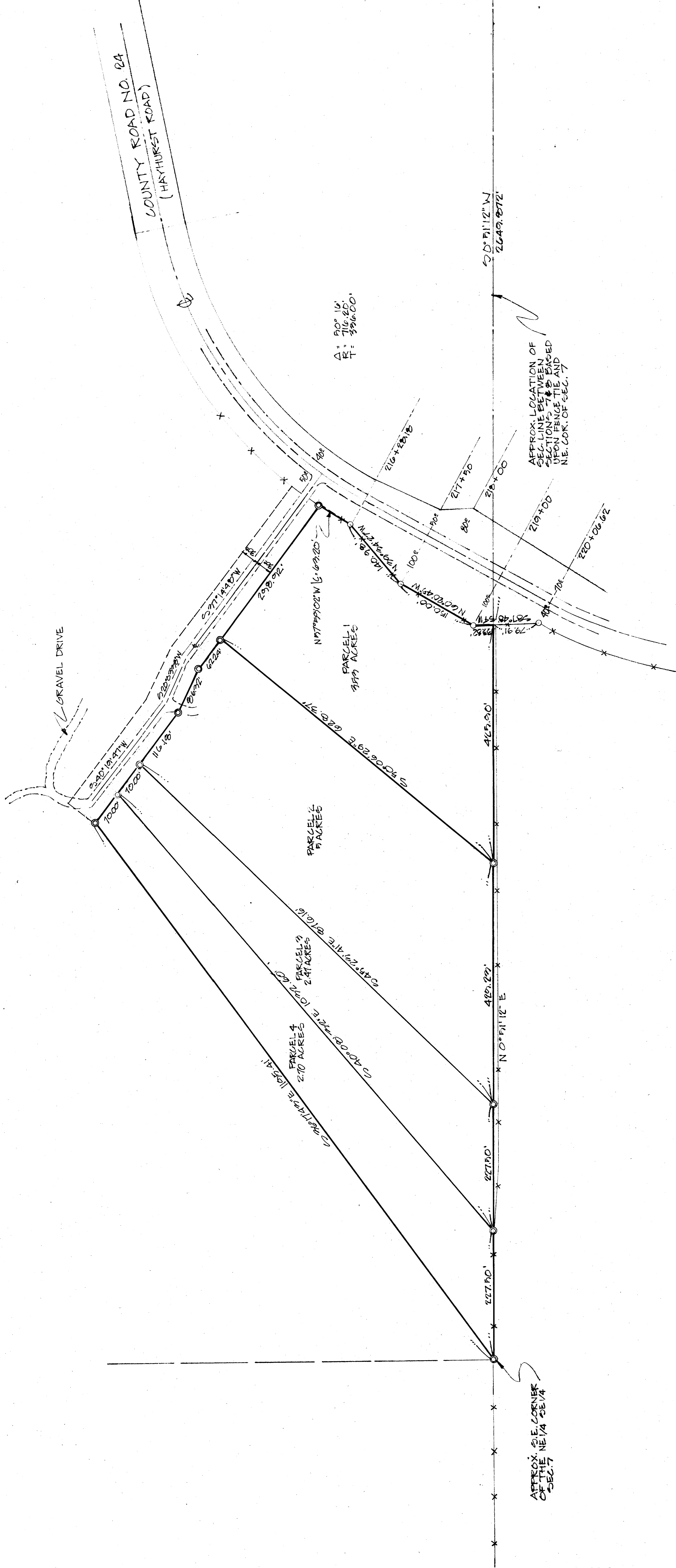
FILED
RECEIVED
JAN 3 1972
COUNTY SURVEYOR
DOUGLAS COUNTY, ORE.

1/4 CORNER
FD. 1/4 SECTION
EAST 1/4

N 89° 28' W 1310.65' MEAS. (1311.31' SURVEY # 47/60)
"BASIS OF BEARING"

6 5
7 8

FIND BEARS CAP
8 5 1/2



SCALE: 1" = 100'
○ PIN FOUND
● PIN SET

PROPERTY SURVEY
LEE WHIPPLE
EAST 1/2 SEC. 7
T 23 S. R 9 W. M. 1
DOUGLAS COUNTY, OREGON
WESTERN ENGINEERING CONSULTANTS
1445 WILLAMETTE ST. EUGENE, OREGON
DATE: 20 NOV. 71 JOE NO. 6999. DRAWING: COUNTY FILE: B-15

REGISTERED
OREGON
LAND SURVEYOR
CLYDE A. RANDALL
205

REGISTERED
OREGON
LAND SURVEYOR
BRIAN J. SKINNER
859

COUNTY SURVEYORS FILE DATA
DO NOT REMOVE FROM OFFICE