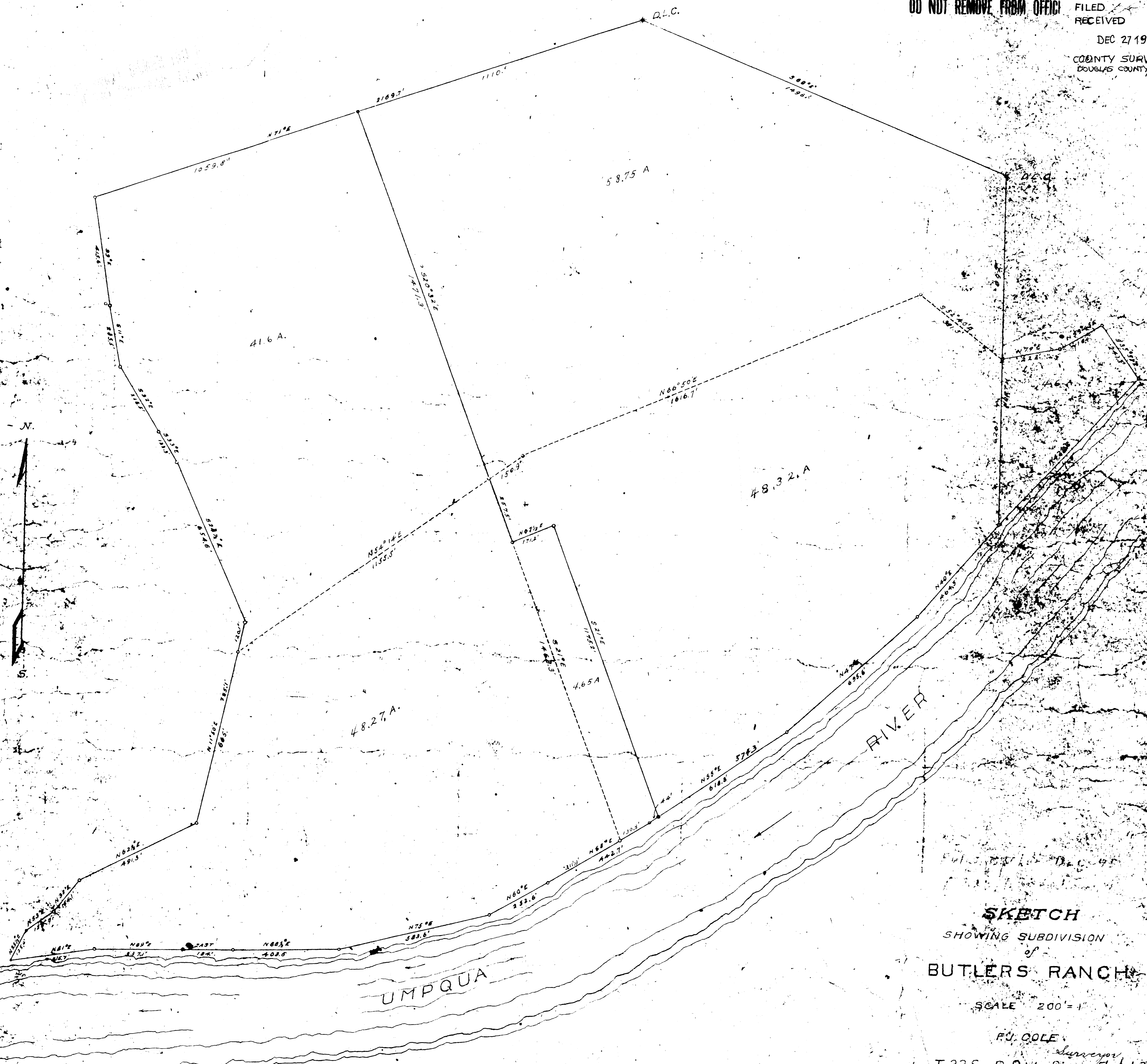


COUNTY SURVEYORS FILE DATA
DO NOT REMOVE FROM OFFICE

FILED
RECEIVED
DEC 27 1977
COUNTY SURVEYOR
DOUGLAS COUNTY, ORE



SKETCH
SHOWING SUBDIVISION
of
BUTLERS RANCH

SCALE 200' = 1"

P.J. COLE
Surveyor
T.22S. R.8W. SECS: 7 & 13
T.22S. R.9W. SECS: 12 & 13
DATE APPROX. 1914

COUNTY SURVEYORS FILE DATA
DO NOT REMOVE FROM OFFICE

THIS COPY MADE FROM
A XEROX 2510
DATE Aug 7, 89

6/19/92
SCC ALSO Vol. 2 pg 192
42-49