

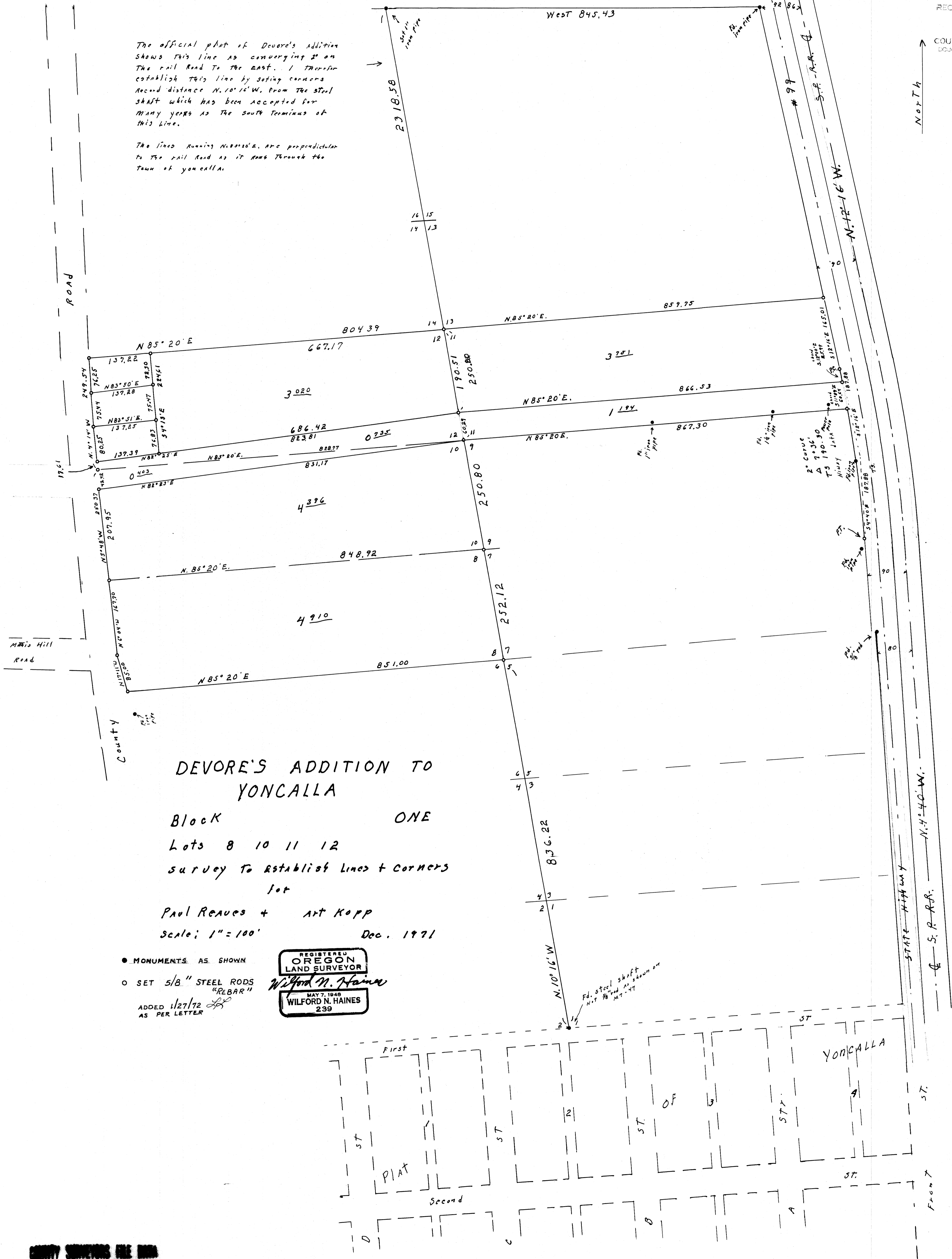
DO NOT REMOVE THIS MARK
DO NOT REMOVE THIS MARK

FILED
RECEIVED
DEC 27 1971
COUNTY SURVEYOR
DOUGLAS COUNTY, ORE.

MAP FILE M-42-48...

The official plat of Devore's Addition shows this line as converging 2' on the rail road to the east. I therefore establish this line by setting corners second distance N. 10° 16' W. from the steel shaft which has been accepted for many years as the south terminus of this line.

The lines running N. 85° 20' E. are perpendicular to the rail road as it runs through the town of Yoncalla.



DEVORE'S ADDITION TO
YONCALLA
Block ONE
Lots 8 10 11 12
Survey to establish lines + corners
for
Paul Reaves + Art Kopp
Scale: 1" = 100'
Dec. 1971

- MONUMENTS AS SHOWN
- SET 5/8" STEEL RODS "REBAR"
- ADDED 1/27/72 AS PER LETTER

REGISTERED
OREGON
LAND SURVEYOR
WILFORD N. HAINES
MAY 7, 1949
239

Wilford N. Haines

MAP FILE M-42-48...

DO NOT REMOVE THIS MARK
DO NOT REMOVE THIS MARK