

COUNTY SURVEYORS FILE DATA
DO NOT REMOVE FROM OFFICE

SURVEY TO SUBDIVIDE SECTION 30, T 24S, R 6W, W.M., DOUGLAS COUNTY, ORE.

Surveyed for Bowles Realty by Victor M. McLind

DECEMBER 1971

SCALE: 1" = 200'

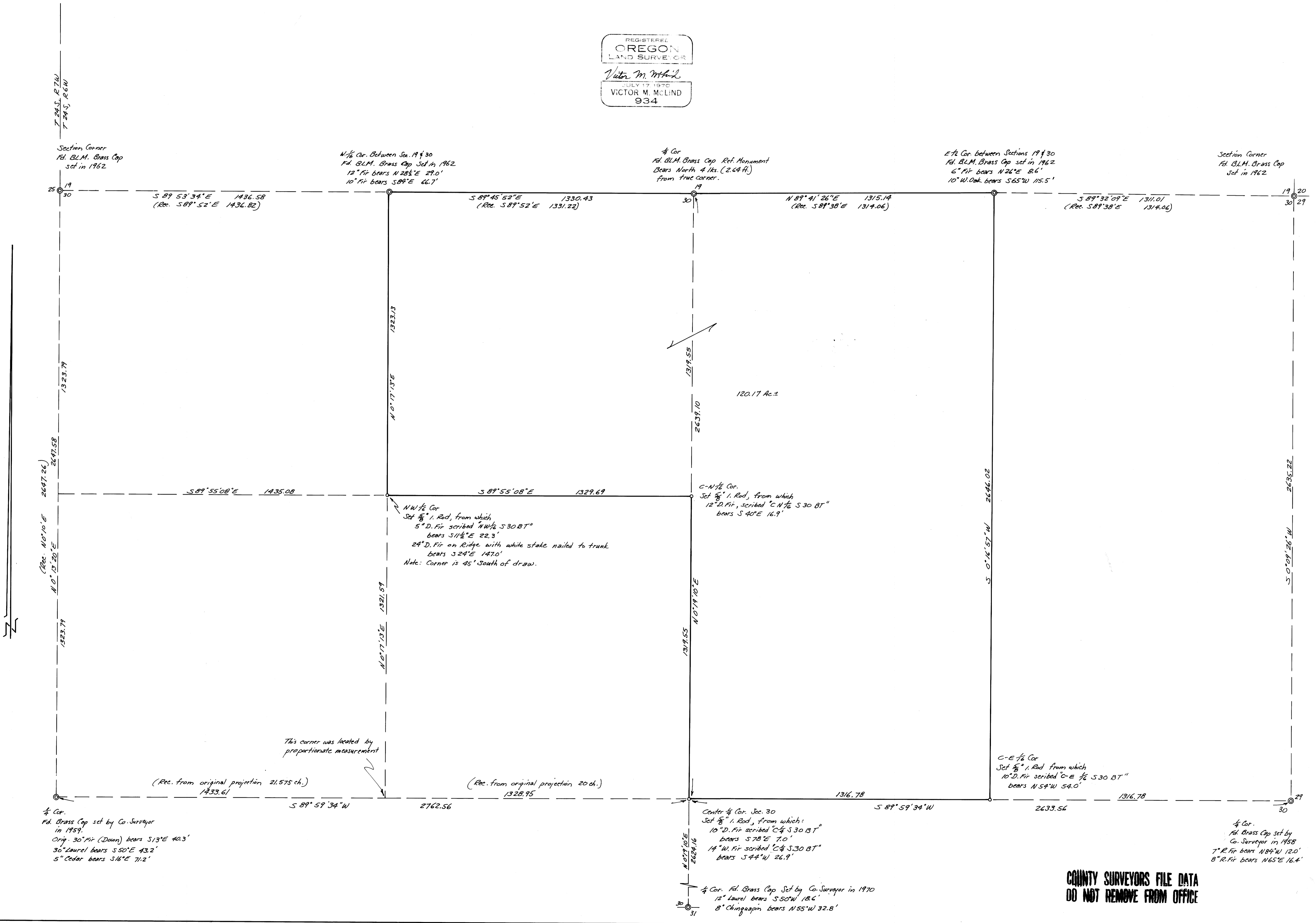
Bearings Based on Solar Observation taken November 29, 1971

FILED
RECEIVED

DEC 8 1971

COUNTY SURVEYOR
DOUGLAS COUNTY, ORE

REGISTERED
OREGON
LAND SURVEYOR
Victor M. McLind
JULY 17 1970
VICTOR M. MCLIND
934



COUNTY SURVEYORS FILE DATA
DO NOT REMOVE FROM OFFICE