

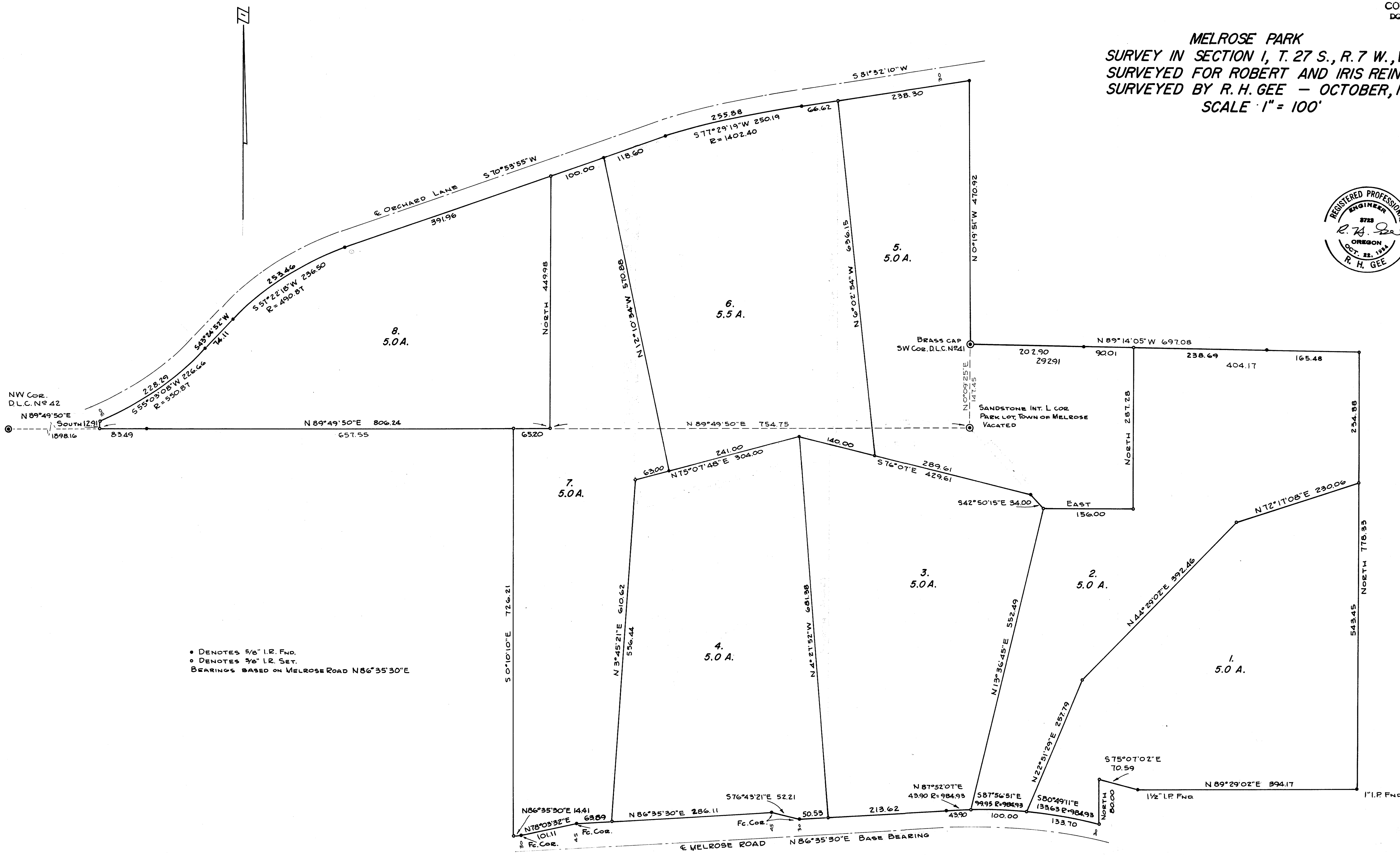
COUNTY SURVEYORS FILE DATA
DO NOT REMOVE FROM OFFICE

FILED
RECEIVED

NOV 11 1971

COUNTY SURVEYOR
DOUGLAS COUNTY, OREGON

MELROSE PARK
SURVEY IN SECTION 1, T. 27 S., R. 7 W., W.M.
SURVEYED FOR ROBERT AND IRIS REINERT
SURVEYED BY R. H. GEE - OCTOBER, 1971
SCALE 1" = 100'



• DENOTES 5/8" I.R. FND.
○ DENOTES 3/8" I.R. SET.
BEARINGS BASED ON MELROSE ROAD N 86° 35' 30" E

COUNTY SURVEYORS FILE DATA
DO NOT REMOVE FROM OFFICE