

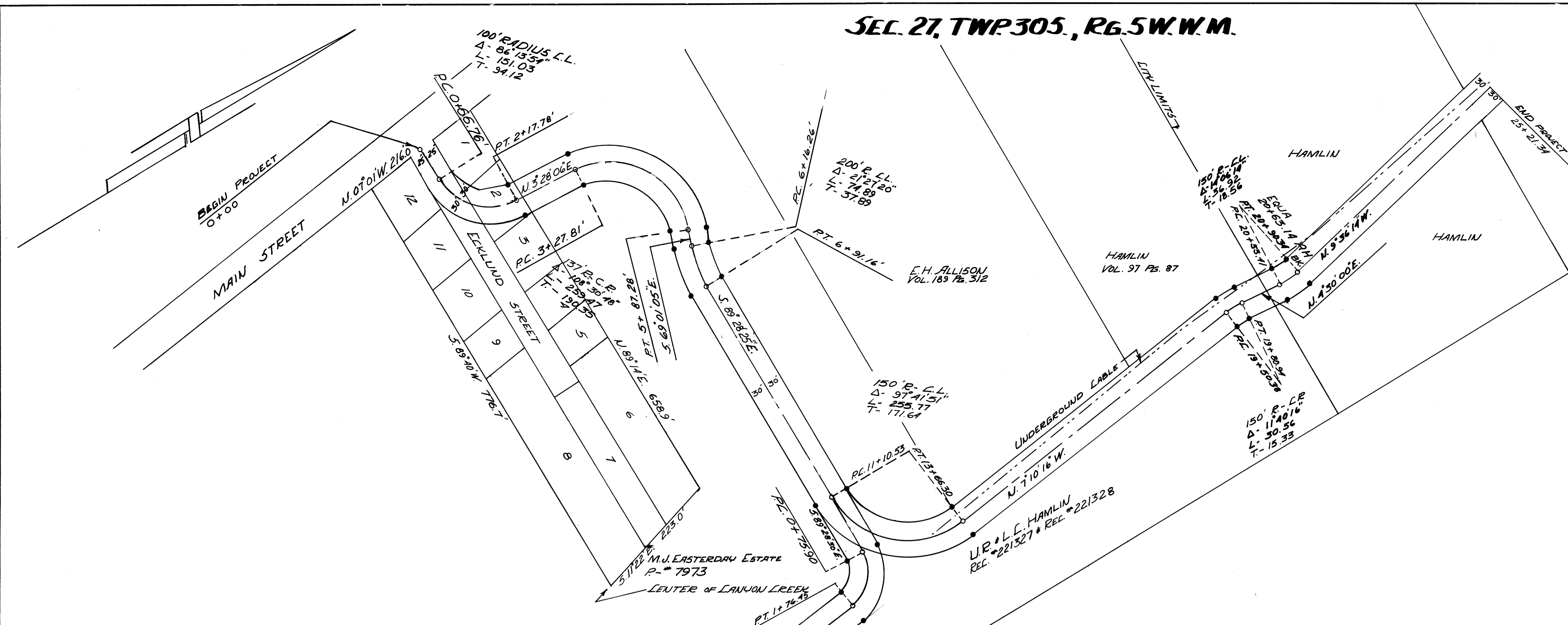
SEC. 27, TWP. 30S., R. 6.5W. W.M.

L.M. & H.S. PRUDEN
VOL. 135 P. 253

FILED *LP*
RECEIVED
NOV 9 1971
COUNTY SURVEYOR
DOUGLAS COUNTY, ORE.

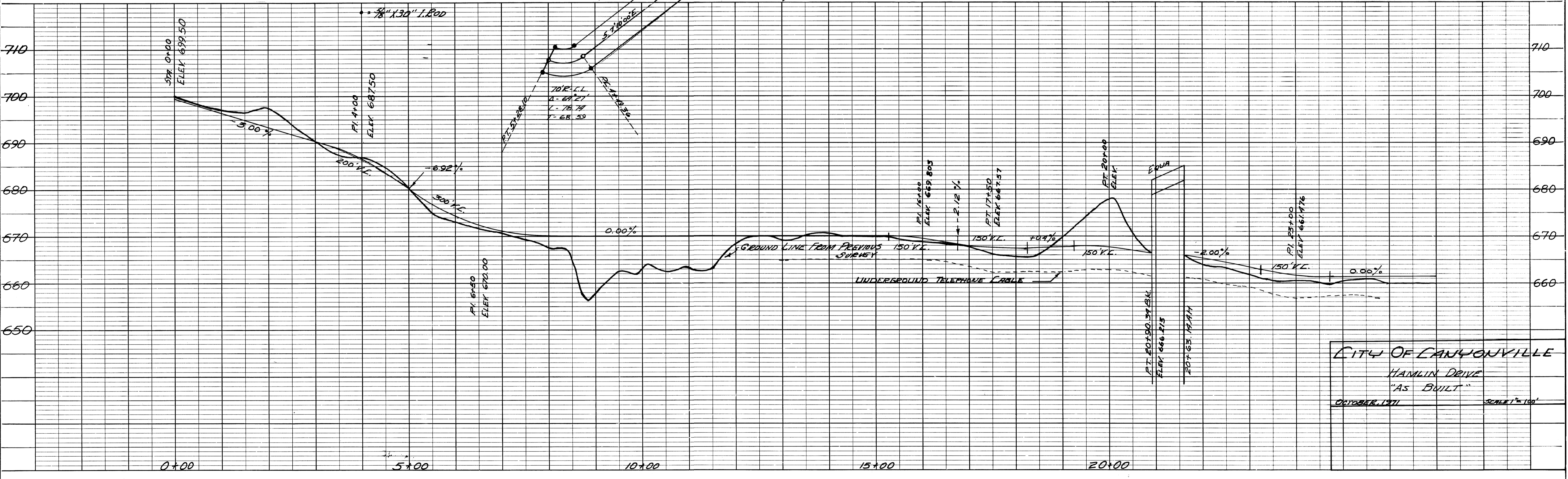
COUNTY SURVEYORS FILE DATA
DO NOT REMOVE FROM OFFICE

PLAN
SURVEYED
PLOTTED
NOTE BOOK
NO.
BY
DATE
RT. OF WAY CHECKED
RT. OF WAY CHECKED



REGISTERED
OREGON
LAND SURVEYOR
Glenn S. Baughman
JULY 14, 1961
GLENN S. BAUGHMAN
536

PROFILE
SURVEYED
PLOTTED
NOTE BOOK
NO.
BY
DATE
B.M. NOTED
STRUCTURE NOTATIONS CHKD.



CITY OF CANYONVILLE
HAMLIN DRIVE
"AS BUILT"
OCTOBER, 1971
SCALE 1"=100'

COUNTY SURVEYORS FILE DATA
DO NOT REMOVE FROM OFFICE