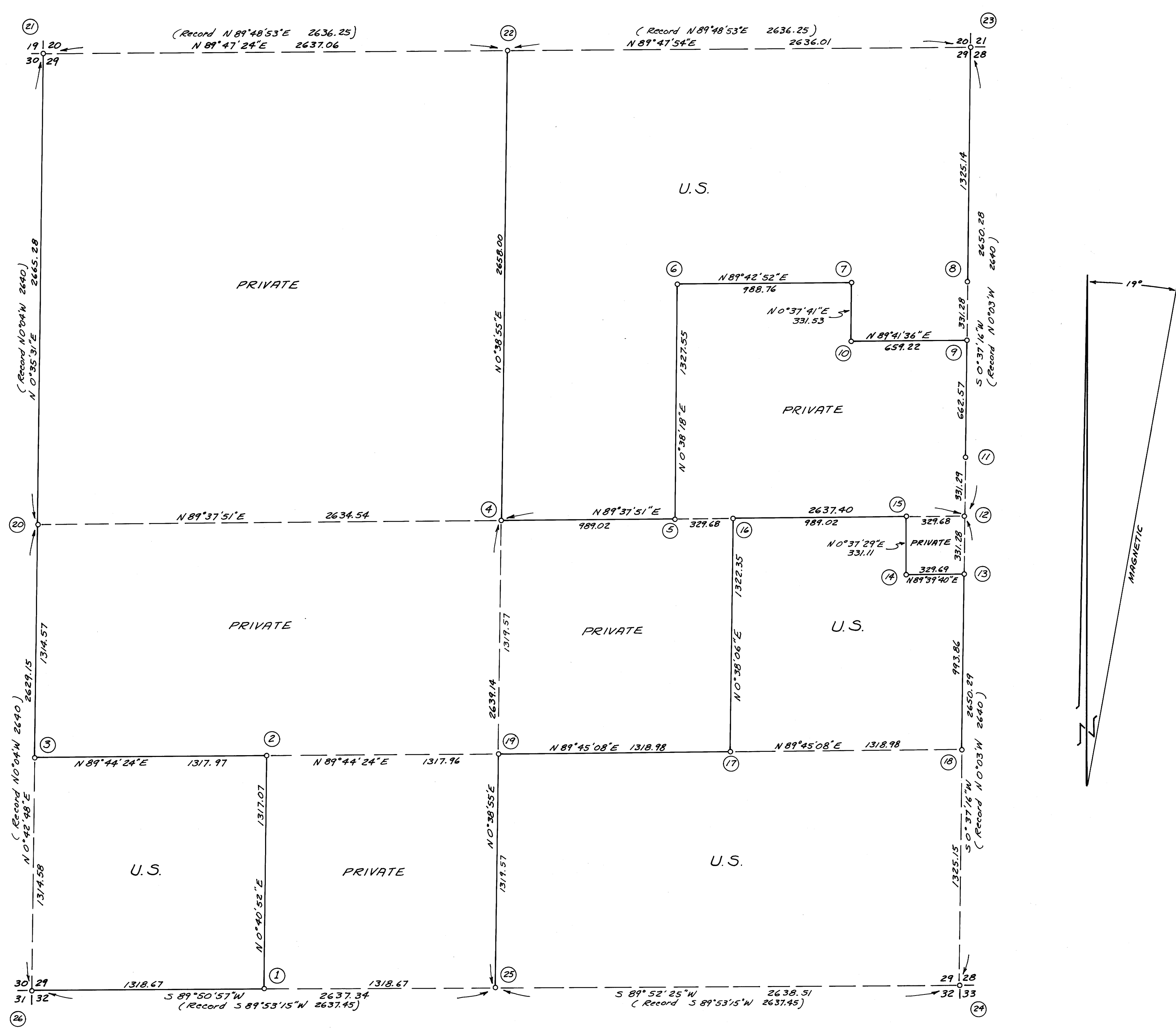


DESCRIPTION OF MONUMENTS AND ACCESSORY TIES

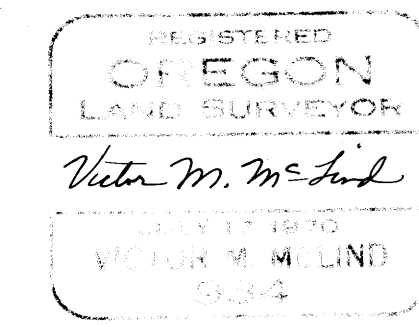
- ① T295 R1W
N 1/2 S 29
R1S 934
1971
W 1/2 Section Corner between Sections 29 & 32
Set a 2" Iron Pipe with a 3" Bronze Disc
stamped as shown.
From Which Bears:
A 14" Cedar scribed N 1/2 S 32 BT, S 27 1/2° E 19.5'
A 10" D. Fir scribed N 1/2 S 29 BT, N 23 1/2° E 27.2'
- ② T295 R1W
SW 1/4 S 29
R1S 934
1971
SW 1/4 Section Corner, Section 29
Set a 2" Iron Pipe with a 3" Bronze Disc
stamped as shown.
From Which Bears:
A 20" D. Fir scribed SW 1/4 S 29 BT, N 68 1/2° E 3.4'
A 4" W. Fir scribed SW 1/4 S 29 BT, N 40° W 11.0'
- ③ T295 R1W
S 1/2 S 29
R1S 934
1971
S 1/2 Section Corner between Sections 29 & 30
Set a 2" Iron Pipe with a 3" Bronze Disc
stamped as shown.
From Which Bears:
A 10" Chinquapin scribed S 1/2 S 30 BT,
N 49 1/2° W 22.3'
A 9" D. Fir scribed S 1/2 S 29 BT, S 56° E 8.9'
- ④ T295 R1W
C 1/4 S 29
R1S 934
1971
Center 1/4 Section Corner, Section 29
Set a 2" Iron Pipe with a 3" Bronze Disc
stamped as shown.
From Which Bears:
A 12" D. Fir scribed C 1/4 S 29 BT, S 29 1/2° W 19.0'
A 14" D. Fir scribed C 1/4 S 29 BT, N 26 1/2° E 17.1'
- ⑤ T295 R1W
S 29
R1S 934
1971
C-E-W-E 1/256 Section Corner, Section 29
Set a 2" Iron Pipe with a 3" Bronze Disc
stamped as shown.
From Which Bears:
A 12" Cedar scribed 1/256 BT, S 43 1/2° W 45.4'
A 14" D. Fir scribed 1/256 BT, N 56° E 10.9'
- ⑥ T295 R1W
C-E-W-NE 1/256
S 29
R1S 934
1971
C-E-W-NE 1/256 Section Corner, Section 29
Set a 2" Iron Pipe with a 3" Bronze Disc
stamped as shown.
From Which Bears:
A 22" Cedar scribed 1/256 BT, S 51° E 9.0'
A 28" D. Fir scribed 1/256 BT, South 39.6'
- ⑦ T295 R1W
S 29
R1S 934
1971
C-E-NE 1/4 Section Corner, Section 29
Set a 2" Iron Pipe with a 3" Bronze Disc
stamped as shown.
From Which Bears:
A 14" Madrone scribed C-E-NE 1/4 S 29 BT,
S 74 1/2° W 25.3'
A 12" D. Fir scribed C-E-NE 1/4 S 29 BT,
S 72 1/2° E 30.6'
- ⑧ T295 R1W
N 1/2 S 29
R1S 934
1971
N 1/2 Section Corner between Sections 28 & 29
Set a 2" Iron Pipe with a 3" Bronze Disc
stamped as shown.
From Which Bears:
A 9" W. Fir scribed N 1/2 S 28 BT, N 42 1/2° E 6.8'
A 18" W. Fir scribed N 1/2 S 28 BT, S 19° E 15.5'
A 24" Cedar scribed N 1/2 S 29 BT, S 89° W 35.5'
- ⑨ T295 R1W
N-S-N 1/256
S 29
R1S 934
1971
N-S-N 1/256 Section Cor. between Sections 28 & 29
Set a 2" Iron Pipe with a 3" Bronze Disc
stamped as shown.
From Which Bears:
A 8" Maple scribed 1/256 BT, S 9 1/2° E 12.4'
A 6" D. Fir scribed 1/256 BT, N 19 1/2° W 63.7'
- ⑩ T295 R1W
C-N-SE-NE 1/256
S 29
R1S 934
1971
C-N-SE-NE 1/256 Section Corner, Section 29
Set a 2" Iron Pipe with a 3" Bronze Disc
stamped as shown.
From Which Bears:
A 9" Cedar scribed 1/256 BT, N 22 1/2° E 19.7'
A 24" D. Fir scribed 1/256 BT, S 63 1/2° W 19.3'
- ⑪ T295 R1W
S-S-N 1/256
S 29
R1S 934
1971
S-S-N 1/256 Section Cor. between Sections 28 & 29
Set a 2" Iron Pipe with a 3" Bronze Disc
stamped as shown.
From Which Bears:
A 18" Madrone scribed 1/256 BT,
S 32° E 26.0'
A 12" D. Fir scribed 1/256 BT, S 58° W 2.4'
- ⑫ T295 R1W
S 29
R1S 934
1971
1/4 Section Corner between Sections 28 & 29
Set a 2" Iron Pipe with a 3" Bronze Disc
stamped as shown.
From Which Bears:
A 14" W. Fir scribed 1/4 S 29 BT, N 76 1/2° W 42.1'
A 16" W. Fir scribed 1/4 S 28 BT, N 36 1/2° E 41.1'
Note: no evidence of original corner found.
Corner re-established by proportionate
measurement from section corners.
- ⑬ T295 R1W
N-N-S 1/256
S 29
R1S 934
1971
N-N-S 1/256 Section Cor. between Sections 28 & 29
Set a 2" Iron Pipe with a 3" Bronze Disc
stamped as shown.
From Which Bears:
A 32" D. Fir scribed 1/256 BT, East 4.4'
A 12" W. Fir scribed 1/256 BT, N 35° W 22.6'
- ⑭ T295 R1W
S 29
R1S 934
1971
NE-NE-SE 1/256 Section Corner, Section 29
Set a 2" Iron Pipe with a 3" Bronze Disc
stamped as shown.
From Which Bears:
A 36" Sugar Pine scribed 1/256 BT, N 85° E 31.4'
A 5" Chinquapin scribed 1/256 BT, S 39 1/2° W 16.2'
- ⑮ T295 R1W
C-E-E-E 1/256
S 29
R1S 934
1971
C-E-E-E 1/256 Section Corner, Section 29
Set a 2" Iron Pipe with a 3" Bronze Disc
stamped as shown.
From Which Bears:
A 12" D. Fir scribed 1/256 BT, S 60° W 50.7'
A 22" W. Fir scribed 1/256 BT, S 89 1/2° E 18.5'
- ⑯ T295 R1W
S 29
R1S 934
1971
C-E 1/16 Section Corner, Section 29
Set a 2" Iron Pipe with a 3" Bronze Disc
stamped as shown.
From Which Bears:
A 12" Maple scribed C-E 1/16 S 29 BT,
S 80° E 35.3'
A 15" Maple scribed C-E 1/16 S 29 BT,
N 25 1/2° W 28.4'
- ⑰ T295 R1W
SE 1/16 S 29
R1S 934
1971
SE 1/16 Section Corner, Section 29
Set a 2" Iron Pipe with a 3" Bronze Disc
stamped as shown.
From Which Bears:
A 8" D. Fir scribed SE 1/16 S 29 BT,
S 55 1/2° E 25.8'
A 6" Cedar scribed SE 1/16 S 29 BT,
West 18.3'
- ⑱ T295 R1W
S 1/16 S 28
R1S 934
1971
S 1/16 Section Corner between Sections 28 & 29
Set a 2" Iron Pipe with a 3" Bronze Disc
stamped as shown.
From Which Bears:
A 12" W. Fir scribed S 1/16 S 28 BT, S 36° E 12.1'
A 9" Maple scribed S 1/16 S 29 BT, N 31 1/2° W 12.3'
- ⑲ T295 R1W
C-S 1/16
S 29
R1S 934
1971
C-S 1/16 Section Corner, Section 29
Set a 2" Iron Pipe with a 3" Bronze Disc
stamped as shown.
From Which Bears:
A 18" D. Fir scribed C-S 1/16 S 29 BT,
S 64 1/2° E 67.3'
A 24" D. Fir scribed C-S 1/16 S 29 BT,
N 67° W 15.8'
- ⑳ SURVEYORS OFFICE
T295 R1W
S 29
R1S 934
1969
1/4 Section Corner between Sections 29 & 30
Found a 1" Iron Pipe with a 2 1/2" Brass Cap
stamped as shown.
From Which Bears:
A 10" Cedar scribed 1/4 S 30 CS BT,
S 74° W 16.7'
A 10" W. Fir scribed 1/4 S 29 CS BT,
N 33° E 34.5'
- ㉑ SURVEYORS OFFICE
T295 R1W
S 29
R1S 934
1969
Section Corner Common to Sections 19, 20, 29 & 30
Found a 1" Iron Pipe with a 2 1/2" Brass Cap
stamped as shown.
From Which Bears:
A 10" Cedar scribes visible, N 58° E 20.0'
A 12" D. Fir, scribes visible, S 68° E 5.2'
A 20" D. Fir, scribes visible, S 59° W 15.8'
A 20" D. Fir, scribes visible, N 48° W 8.7'
- ㉒ T295 R1W
S 20
R1S 222
1970
1/4 Section Corner between Sections 20 & 29
Found a 2" Iron Pipe with a 2 1/2" Brass Cap
stamped as shown.
From Which Bears:
A 10" D. Fir scribed 1/4 S 20 BT, N 4° E 13.7'
A 6" Ash scribed 1/4 S 29 BT, S 24° W 14.5'
- ㉓ SURVEYORS OFFICE
T295 R1W
S 20
R1S 222
1969
Section Corner Common to Sections 20, 21, 28 & 29
Found a 1" Iron Pipe with a 2 1/2" Brass Cap (set
in mound of stone) stamped as shown.
From Which Bears:
A 6" D. Fir, scribes visible, N 53° E 23.5'
A 20" D. Fir, scribes visible, S 53° E 23.5'
A 20" Cedar Original BT, S 50° W 47.3'
A 30" D. Fir Original BT, N 81° W 53.5'
- ㉔ SURVEYORS OFFICE
T295 R1W
S 29
R1S 934
1969
Section Corner Common to Sections 28, 29, 32 & 33
Found a 1" Iron Pipe with a 2 1/2" Brass Cap
stamped as shown.
From Which Bears:
A 24" W. Fir, scribes visible, N 26 1/2° E 42.8'
A 18" Cedar, scribes visible, S 28 1/2° W 31.7'
A 50" D. Fir, Original BT, N 39° W 46.2'
A 14" W. Fir, S 85 1/2° E 28.2'
- ㉕ T295 R1W
S 29
R1S 222
1970
1/4 Section Corner between Sections 29 & 32
Found a 2" Iron Pipe with a 2 1/2" Brass Cap
stamped as shown.
From Which Bears:
A 6" Madrone scribed 1/4 S 29 BT,
N 13° E 37.1'
A 14" Madrone scribed 1/4 S 32 BT,
S 7 1/2° E 43.6'
- ㉖ SURVEYORS OFFICE
T295 R1W
S 29
R1S 934
1969
Section Corner Common to Sections 29, 30, 31 & 32
Found a 1" Iron Pipe with a 2 1/2" Brass Cap
stamped as shown.
From Which Bears:
A 15" Cedar, scribes visible, N 44° E 46.4'
A 10" D. Fir, scribes visible, S 65° E 9.6'
A 16" D. Fir, Original BT, N 20 1/2° W 17.2'
A 12" Madrone, Original BT, scribes visible,
S 52 1/2° W 19.8'



I, Victor M. McLind, a registered Land Surveyor in the State of Oregon, hereby certify that this plat and the notes hereon, or attached, are a correct representation of a survey I performed during July, August, September, and October, 1917, for the U.S. Forest Service, in accordance with the statutes of the State of Oregon and the articles of my contract.

Victor M. McLind
Victor M. McLind
Registered Land Surveyor
Oregon License 934

LEGEND:
— Solid Lines indicate National Forest Boundary.
- - - Dashed Lines indicate Section Lines or sectional subdivision lines.



PLAT OF SURVEY
LOCATED IN
SECTION 29, T29S, R1W, W.M.
DOUGLAS COUNTY, OREGON

FOR
THE UNITED STATES DEPARTMENT OF AGRICULTURE
UMPUQUA NATIONAL FOREST

VICTOR M. McLIND, OAKLAND, ORE.
SCALE: 1" = 400'
OCTOBER 6, 1917
BEARINGS BASED ON SOLAR OBSERVATION

TILLER LAND SURVEY NO. 5
CONTRACT NO. 003227N