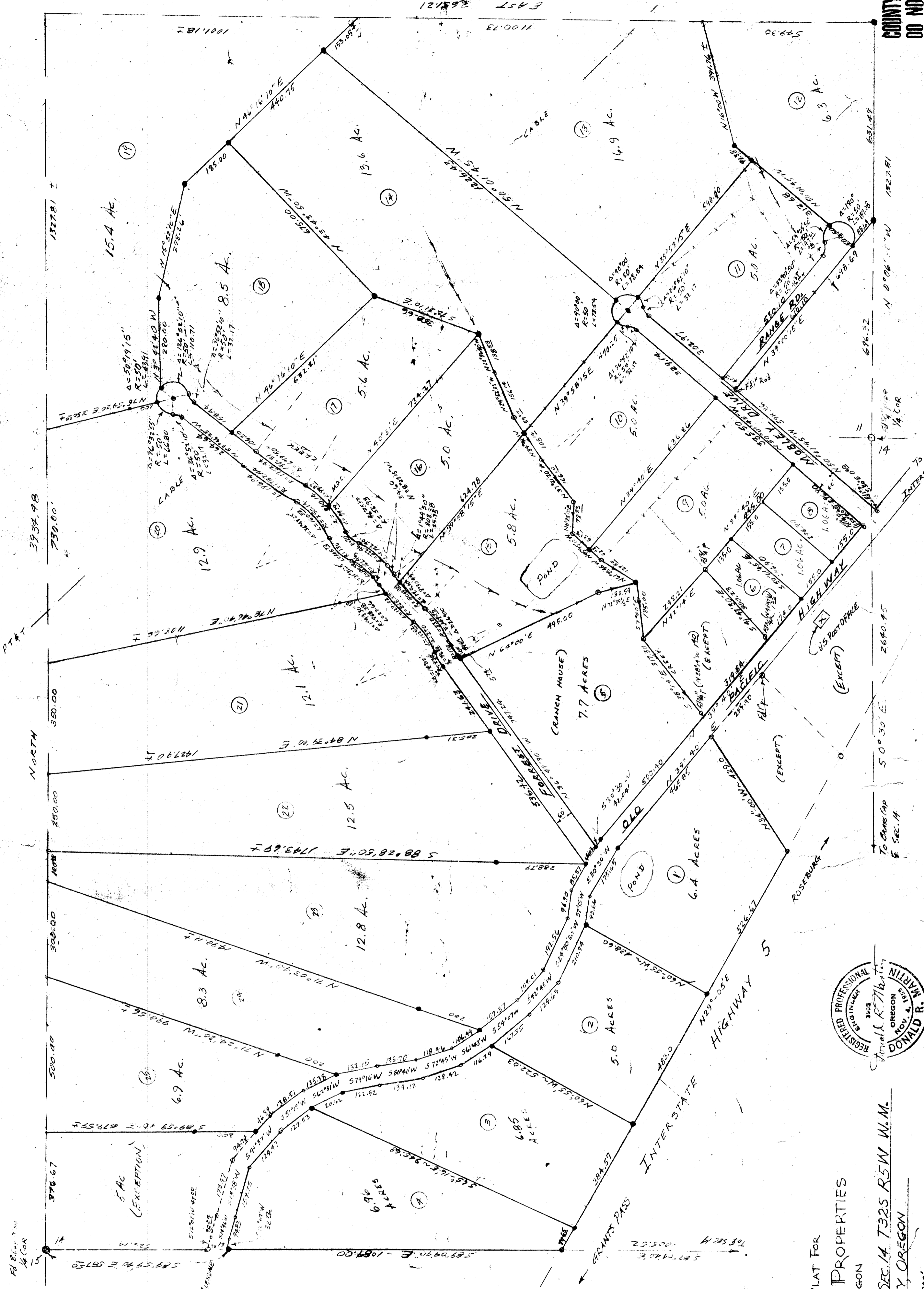


COUNTY SURVEYORS FILE DATA  
DO NOT REMOVE FROM OFFICE

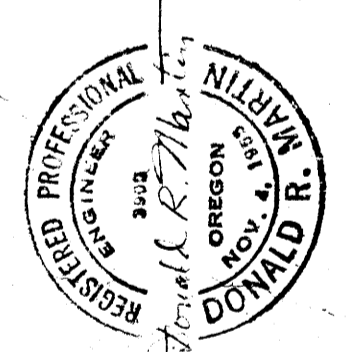


BASE OF BEARING: INTERSTATE HWY = N 29° 05' E  
 • SET 8\" x 30\" IRON RODS

FIELD SURVEY & PLAT FOR  
**AZALEA RANCH PROPERTIES**  
 AZALEA, OREGON

LOCATION: SW 1/4 SEC. 11 & NW 1/4 SEC. 14 T32S R5W W.M.  
 DOUGLAS COUNTY, OREGON

SCALE: 1\" = 200'



MARTIN ENGINEERING SERVICE ~ MYRTLE CREEK, ORE.

COUNTY SURVEYORS FILE DATA  
 DO NOT REMOVE FROM OFFICE

MAY 1971

M42-37