

SURVEY IN SECTION 16, T29S, R6W, W.M., DOUGLAS COUNTY, OREGON

Surveyed for Willis Creek Properties Inc. by Victor M. McLind

August 1971

Scale: 1" = 100' 200'

Bearings Based on Solar Observation
on April 1, 1971

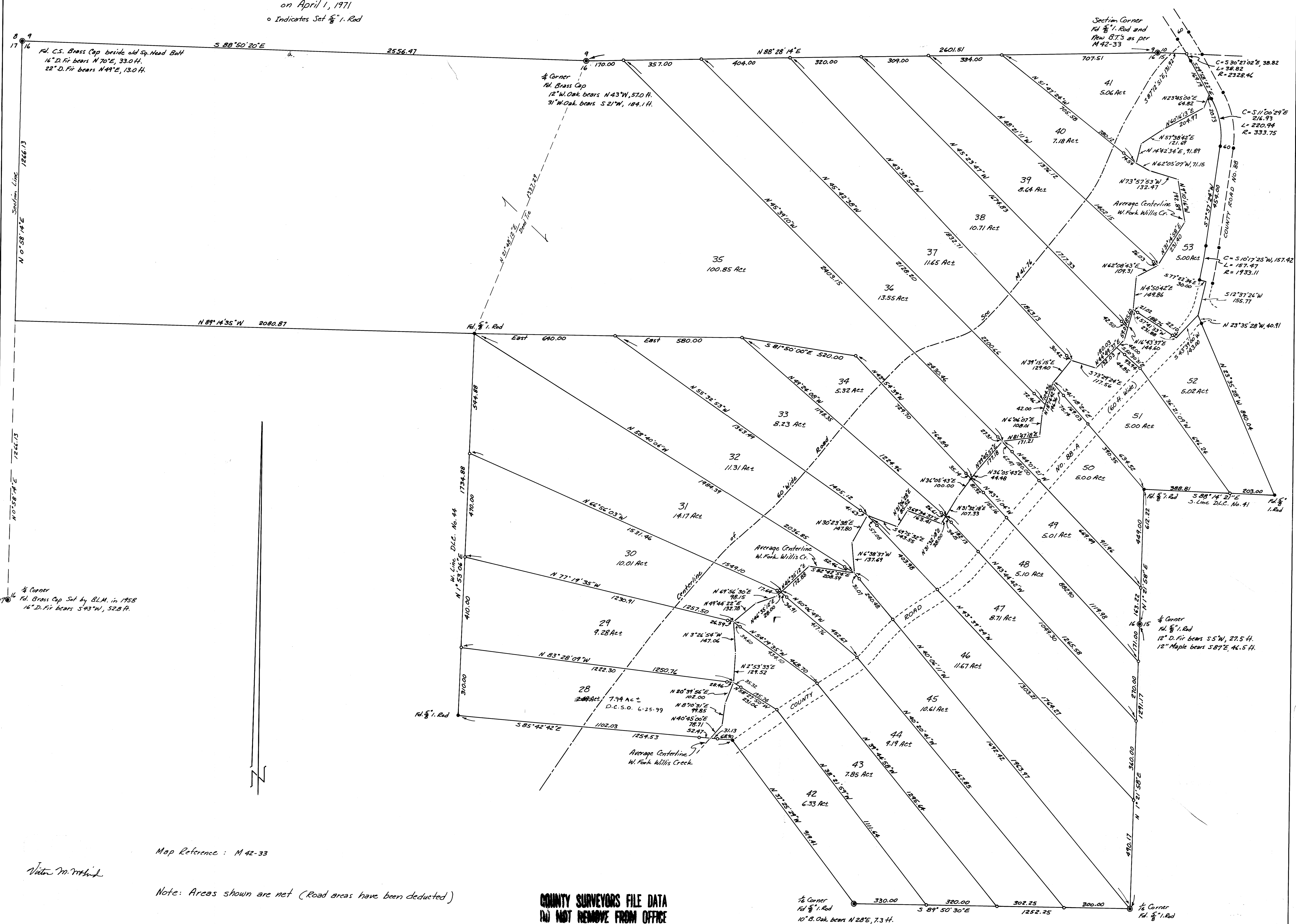
o Indicates Set $\frac{1}{4}$ " 1. Red

COUNTY SURVEYORS FILE DATA
DO NOT REMOVE FROM OFFICE

FILED
RECEIVED

SEP 8 1971

COUNTY SURVEYOR
DOUGLAS COUNTY, OREGON



Map Reference : M 42-33

Victor M. McLind

Note: Areas shown are net (Road areas have been deducted)

COUNTY SURVEYORS FILE DATA
DO NOT REMOVE FROM OFFICE

1/4 Corner Pd. 1. Red
10" B. Oak bears N 28° E, 7.3 H.
4" W. Oak bears S 28° E, 69.0 H.

1/4 Corner Pd. 1. Red
12" D. Fir bears S 57° E, 46.5 H.
12" Maple bears S 87° E, 46.5 H.

1/4 Corner Pd. 1. Red and New B.T.'s as per M 42-33

Section Corner Pd. 1. Red and New B.T.'s as per M 42-33