

COUNTY SURVEYORS FILE DATA
DO NOT REMOVE FROM OFFICE

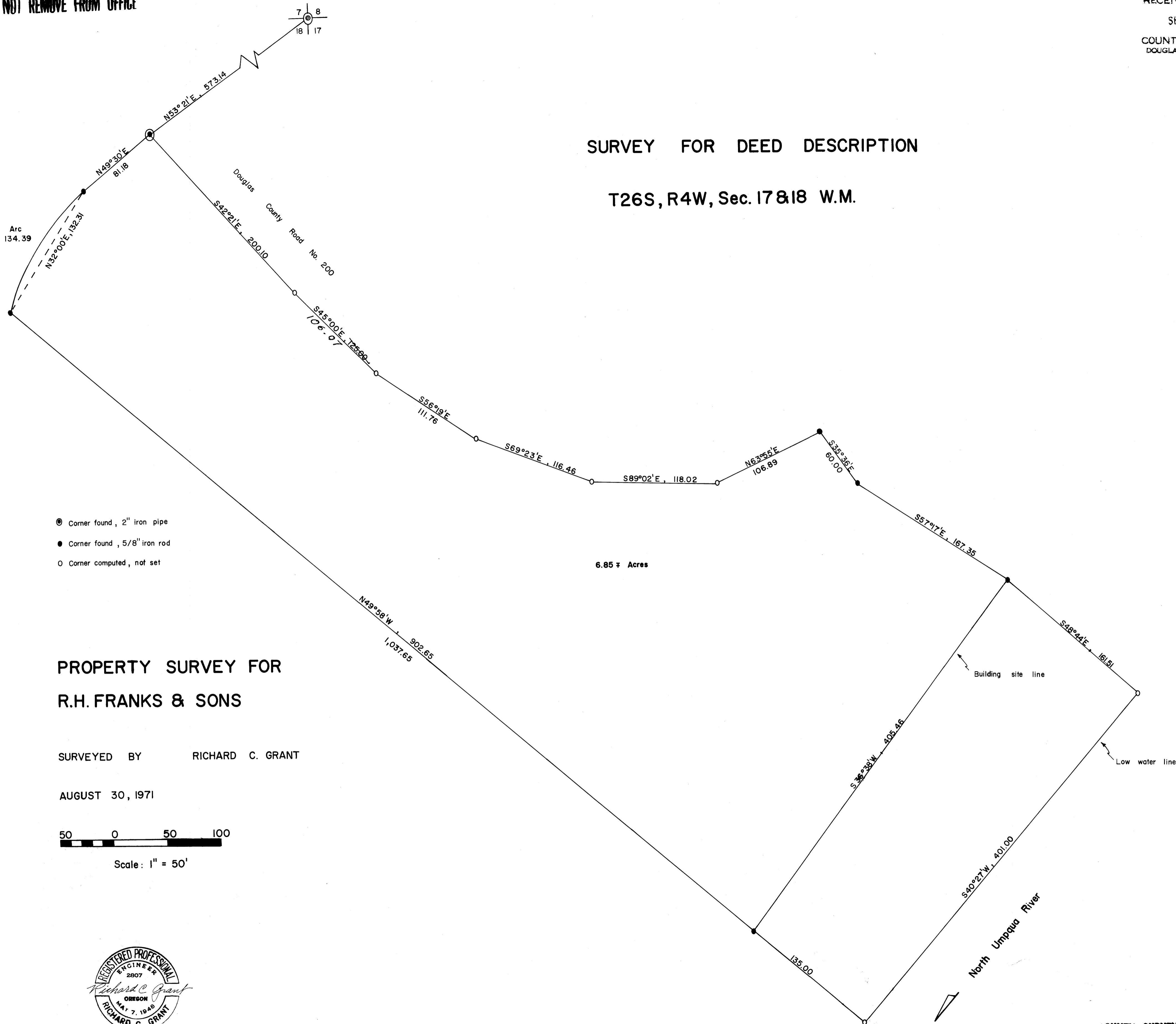
FILED
RECEIVED

SEP 1 1971

COUNTY SURVEYOR
DOUGLAS COUNTY, ORE.

SURVEY FOR DEED DESCRIPTION

T26S, R4W, Sec. 17 & 18 W.M.



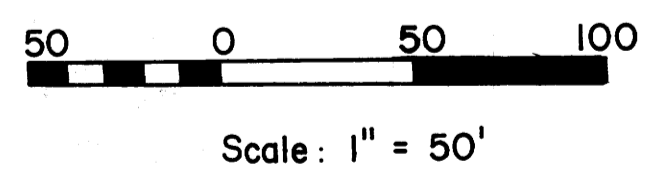
Arc
134.39

- Corner found, 2" iron pipe
- Corner found, 5/8" iron rod
- Corner computed, not set

6.85 ± Acres

PROPERTY SURVEY FOR R.H. FRANKS & SONS

SURVEYED BY RICHARD C. GRANT
AUGUST 30, 1971



COUNTY SURVEYORS FILE DATA
DO NOT REMOVE FROM OFFICE