

SURVEY TO SHOW PROPERTY LINES IN SECTION 16, T29S, R6W, W.M.  
Surveyed for Willis Creek Properties Inc. by Victor M. McLind  
July 1971

Bearings Based on Solar Observation April 1, 1971

Scale: 1" = 300'

o Indicates Set  $\frac{3}{8}$ " I. Rod

COUNTY SURVEYORS FILE DATA  
DO NOT REMOVE FROM OFFICE

FILED  
RECEIVED

AUG 9 1971

COUNTY SURVEYOR  
DOUGLAS COUNTY, ORE.

Pl. CS. Brass Cap beside old Square Head Bolt  
16" D. Fir Bears N 70° E, 33.2 Ft. (New BT.)  
22" D. Fir Bears N 49° E, 13.2 Ft.

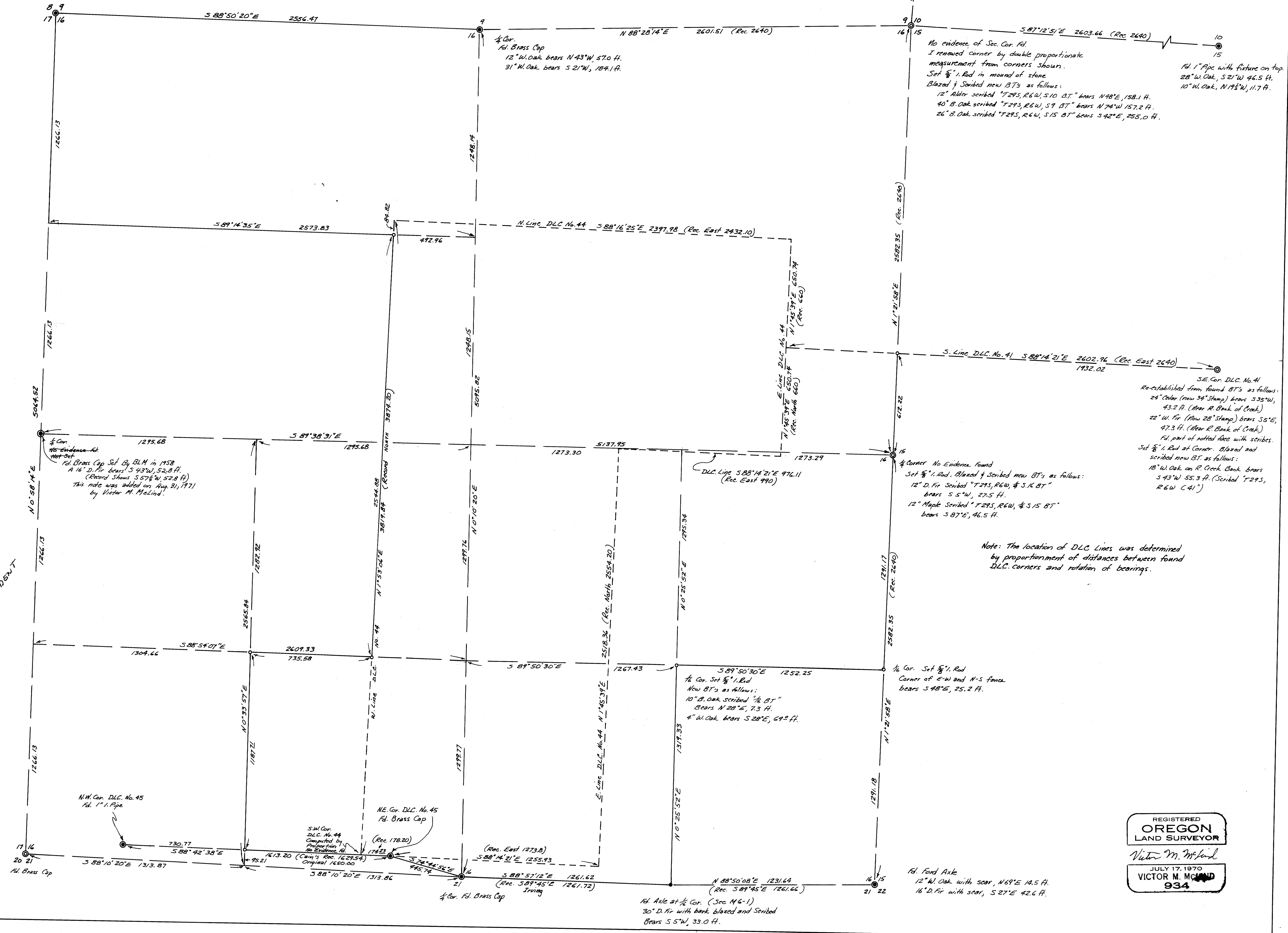
$\frac{1}{4}$  Cor. Renewed from BT's  
Pl. Remains of 24" B. Oak & stump hole S 65° W 587.0 Ft.  
Pl. 10" (Now 22") Maple with scar N 23° W, 166.0 Ft.  
Set  $\frac{3}{8}$ " I. Rod buried 1.0 Ft. deep in open field.  
Centerline of Co. Rd. No. 88 bears West 150 Ft.

No evidence of Sec. Cor. Pl.  
I renewed corner by double proportionate  
measurement from corners shown.  
Set  $\frac{3}{8}$ " I. Rod in mound of stone.  
Blazed & Scribbled new BT's as follows:  
12" Alder scribbled "T29S, R6W, S10 BT." bears N 48° E, 158.1 Ft.  
40" B. Oak scribbled "T29S, R6W, S9 BT." bears N 74° W 157.2 Ft.  
26" B. Oak scribbled "T29S, R6W, S15 BT." bears S 42° E, 255.0 Ft.

S.E. Cor. DLC No. 41  
Re-established from found BT's as follows:  
24" Cedar (now 34" Stump) bears S 35° W,  
43.2 Ft. (Near R. Bank of Creek)  
22" W. Fir (Now 28" Stump) bears S 5° E,  
47.3 Ft. (Near R. Bank of Creek)  
Pl. part of notched face with scribes.  
Set  $\frac{3}{8}$ " I. Rod at Corner. Blazed and  
scribbled new BT. as follows:  
18" W. Oak on R. Creek Bank bears  
S 43° W 55.3 Ft. (Scribbled "T29S,  
R6W C41")

Note: The location of DLC Lines was determined  
by proportionment of distances between found  
DLC corners and rotation of bearings.

NOTE: SEE N. Johnstone  
Survey M 101-72 - ALSO  
B/M CORRECTIVE DEPENDENT  
RESURVEY.



COUNTY SURVEYORS FILE DATA  
DO NOT REMOVE FROM OFFICE

REGISTERED  
OREGON  
LAND SURVEYOR  
Victor M. McLind  
JULY 17, 1970  
VICTOR M. MCCLIND  
934