

COUNTY SURVEYORS FILE DATA
DO NOT REMOVE FROM OFFICE

SURVEY IN SECTIONS 21 & 28, T26S, R5W, W.M., DOUGLAS COUNTY, ORE.
Surveyed For George Keller Realty by Victor M. McLind
Scale: 1" = 200'

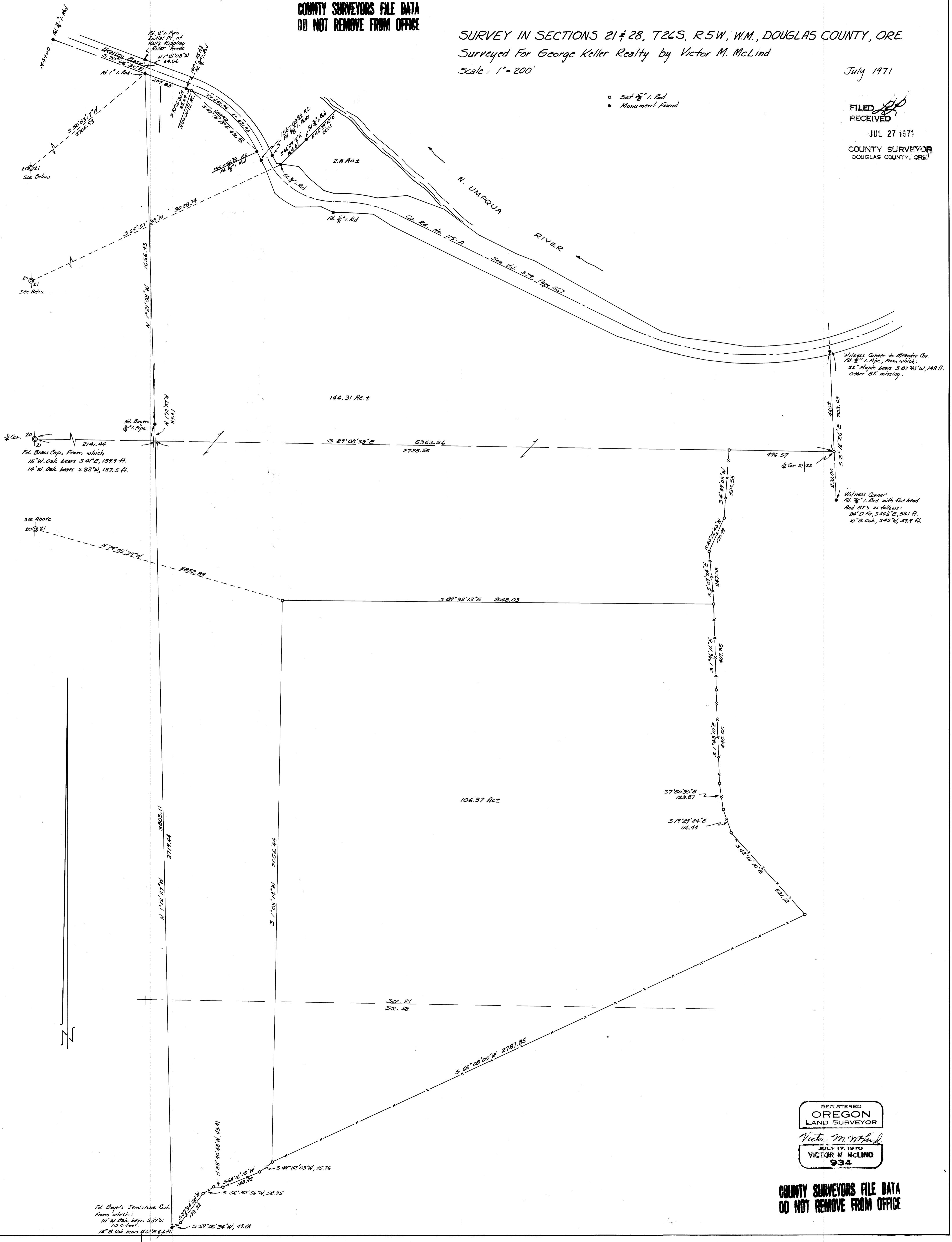
July 1971

FILED
RECEIVED

JUL 27 1971

COUNTY SURVEYOR
DOUGLAS COUNTY, ORE.

- Set $\frac{5}{8}$ " I. Rod
- Monument Found



Witness Corner to McConder Cor.
Pd. $\frac{5}{8}$ " I. Pipe, from which:
22" Maple bears S 87°45' W, 149 ft.
Other BT missing.

Witness Corner
Pd. $\frac{5}{8}$ " I. Rod with flat head
And BT's as follows:
24" D. Fir, S 34 $\frac{1}{2}$ ° E, 53.1 ft.
10" B. Oak, S 45° W, 57.9 ft.

$\frac{1}{4}$ Cor. 20
Pd. Brass Cap. From which
15" W. Oak bears S 41° E, 159.9 ft.
14" W. Oak bears S 32° W, 137.5 ft.

Pd. Buyer's Sandstone Rock
From which:
10" W. Oak bears S 37° W
101.0 feet
15" B. Oak bears N 47° E 66.4 ft.

REGISTERED
OREGON
LAND SURVEYOR
Victor M. McLind
JULY 17, 1970
VICTOR M. McLIND
934

COUNTY SURVEYORS FILE DATA
DO NOT REMOVE FROM OFFICE

M 42 - 30

M 42 - 30