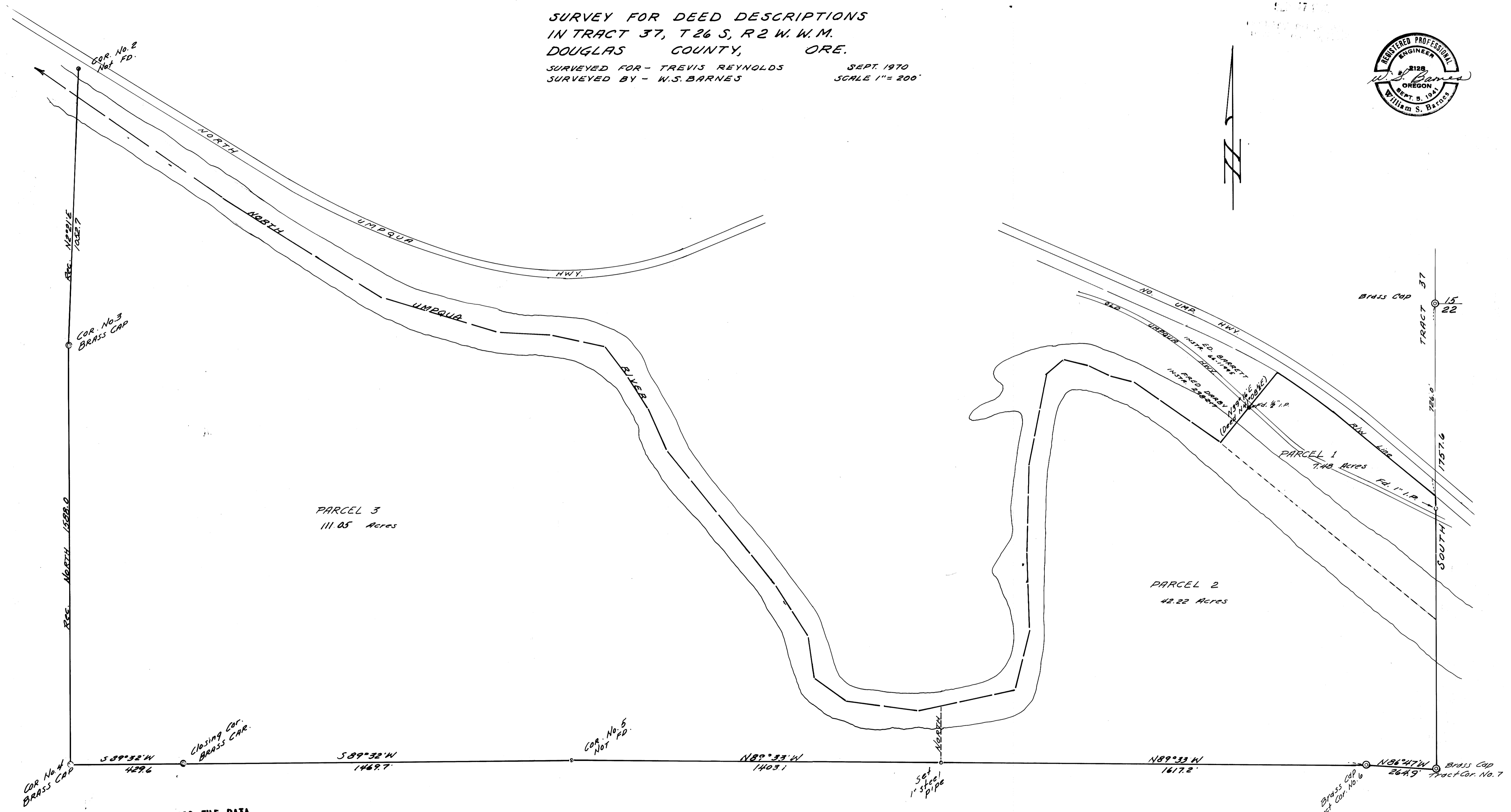
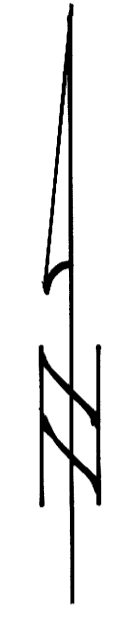
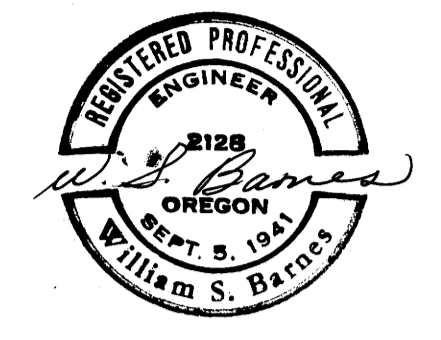


SURVEY FOR DEED DESCRIPTIONS  
IN TRACT 37, T 26 S, R 2 W. W. M.  
DOUGLAS COUNTY, ORE.  
SURVEYED FOR - TRAVIS REYNOLDS  
SURVEYED BY - W.S. BARNES  
SEPT. 1970  
SCALE 1" = 200'



COUNTY SURVEYORS FILE DATA  
DO NOT REMOVE FROM OFFICE