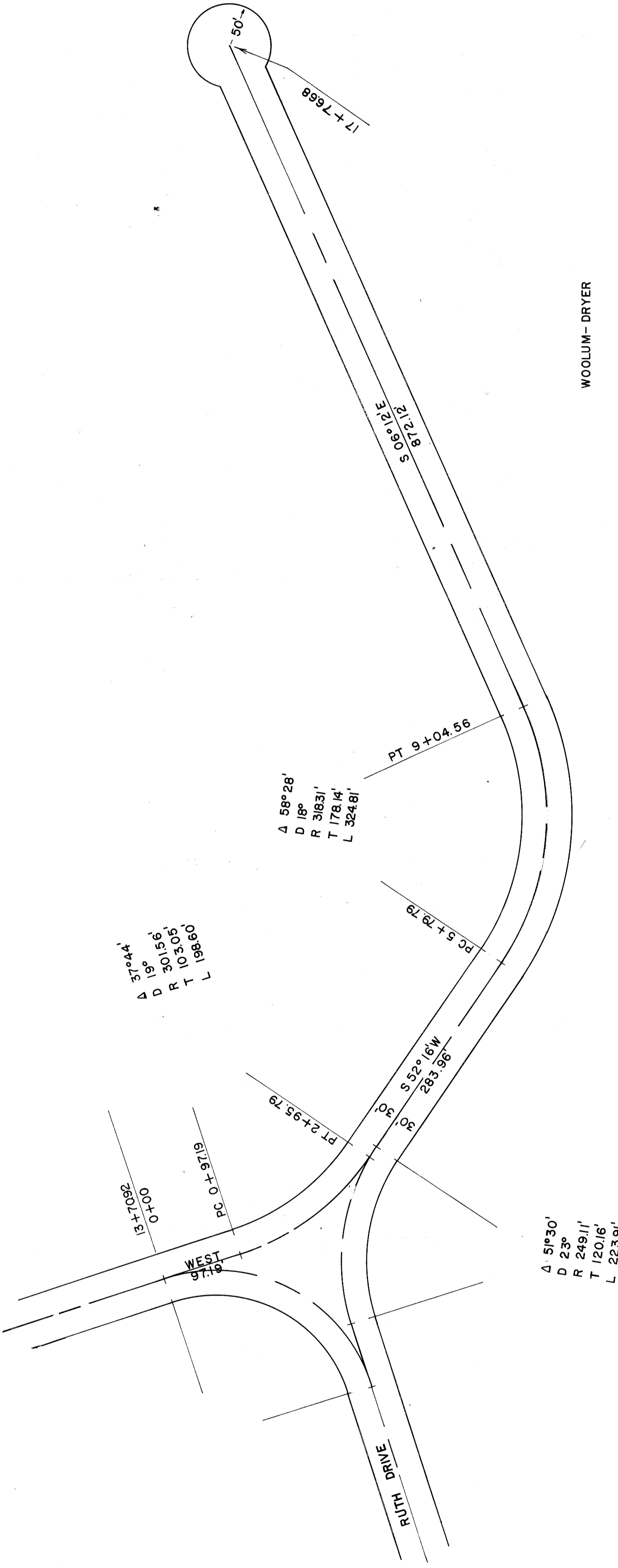


COUNTY SURVEYORS FILE DATA
DO NOT REMOVE FROM OFFICE

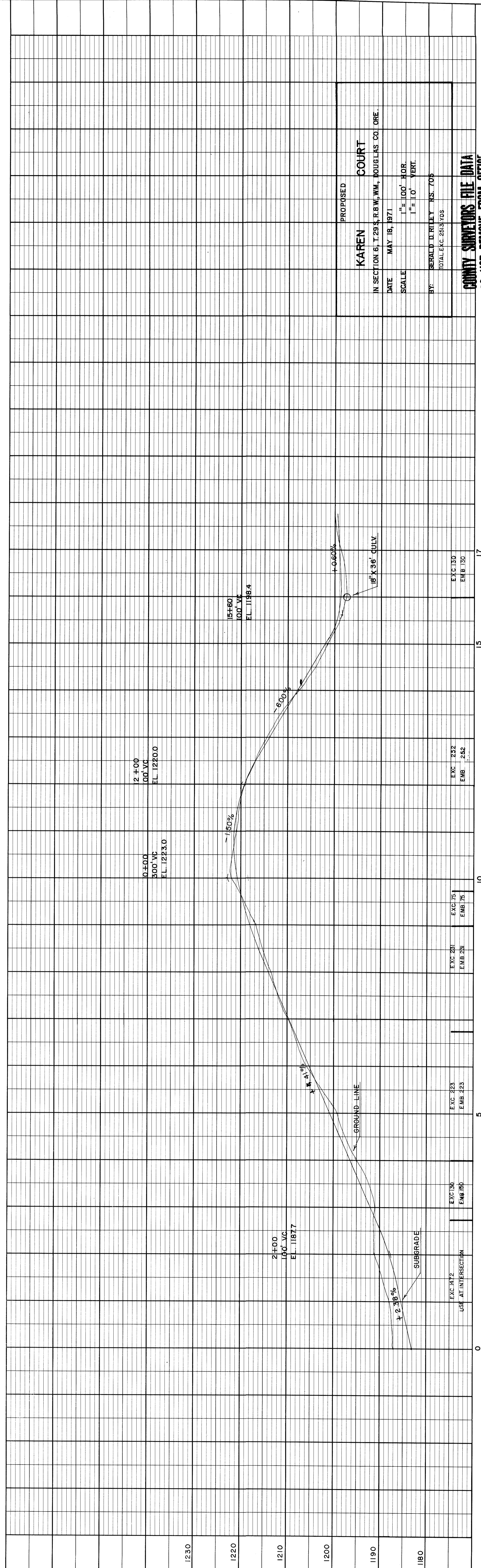
FILED
RECEIVED
JUL 20 1971
COUNTY SURVEYOR
DOUGLAS COUNTY, ORE.



WOOLUM- DRYER

NO.	DATE
BY	
SURVEYED	
PLOTS	
GRABES CHECKED	
NOTE BOOK	
ALIGNED CHECKED	
RT. OF MAP CHECKED	

NO.	DATE
BY	
SURVEYED	
PLOTS	
GRABES CHECKED	
NOTE BOOK	
STRUCTURE NOTAS CH. K.D.	



PROPOSED	KAREN COURT
IN SECTION 6, T. 29 S., R. 8 W., W.M., DOUGLAS CO., ORE.	
DATE	MAY 18, 1971
SCALE	1" = 100' HOR. 1" = 10' VERT.
BY:	GERALD D. RILEY P.S. 705 TOTAL EXC 283.705

COUNTY SURVEYORS FILE DATA
DO NOT REMOVE FROM OFFICE

PLATE 1 - PLAN PROFILE - P.S. & E. STANDARD
USE: MAP PAPER MADE AND PRINTED IN U.S.A.
EUBENE DIETZEN CO.

MAP FILE 42-22