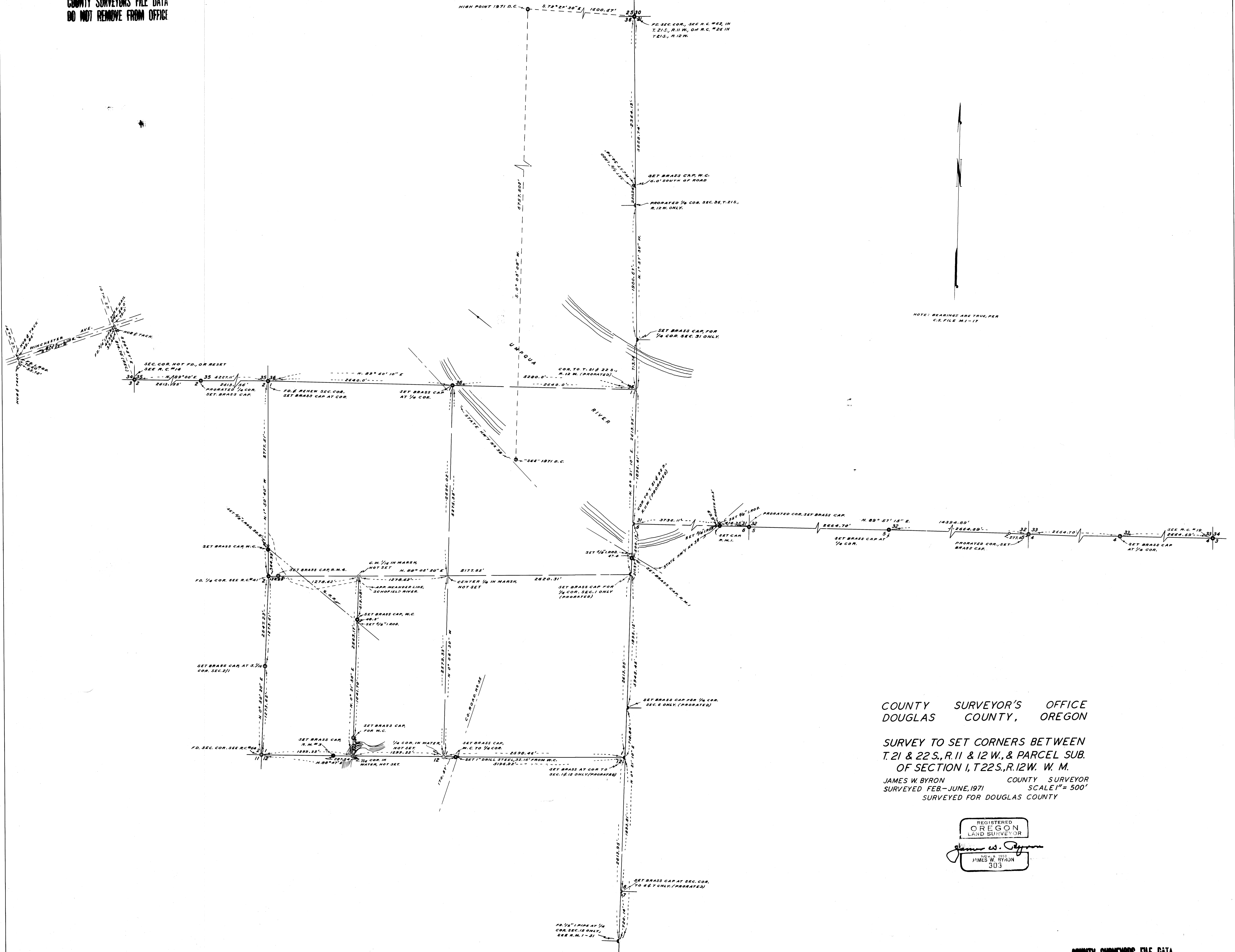


COUNTY SURVEYORS FILE DATA
DO NOT REMOVE FROM OFFICE



NOTE: BEARINGS ARE TRUE, PER
C.S. FILE M-1-17

COUNTY SURVEYOR'S OFFICE
DOUGLAS COUNTY, OREGON

SURVEY TO SET CORNERS BETWEEN
T. 21 & 22 S., R. 11 & 12 W., & PARCEL SUB.
OF SECTION 1, T. 22 S., R. 12 W. W. M.

JAMES W. BYRON COUNTY SURVEYOR
SURVEYED FEB-JUNE, 1971 SCALE 1" = 500'
SURVEYED FOR DOUGLAS COUNTY

REGISTERED
OREGON
LAND SURVEYOR

James W. Byron

JAMES W. BYRON
303

COUNTY SURVEYORS FILE DATA
DO NOT REMOVE FROM OFFICE