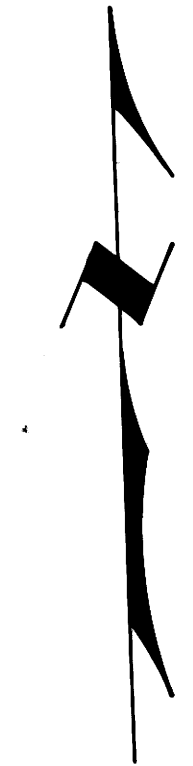
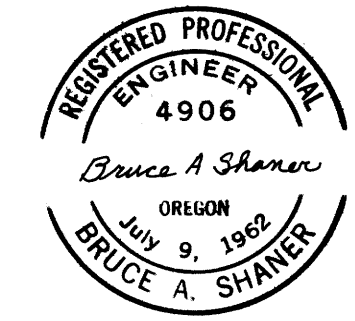
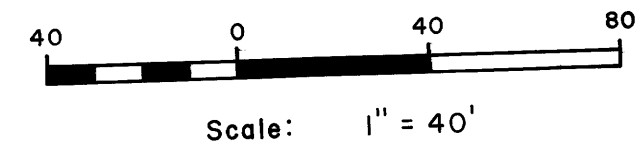


COUNTY SURVEYORS FILE DATA
DO NOT REMOVE FROM OFFICE

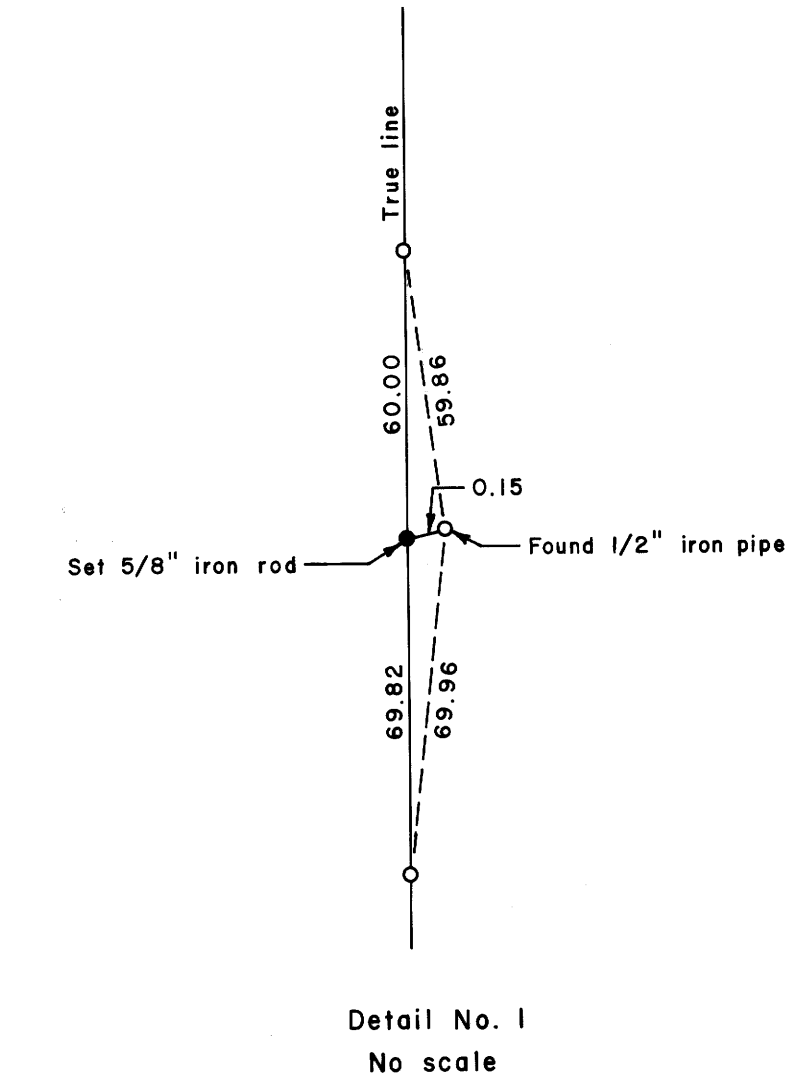
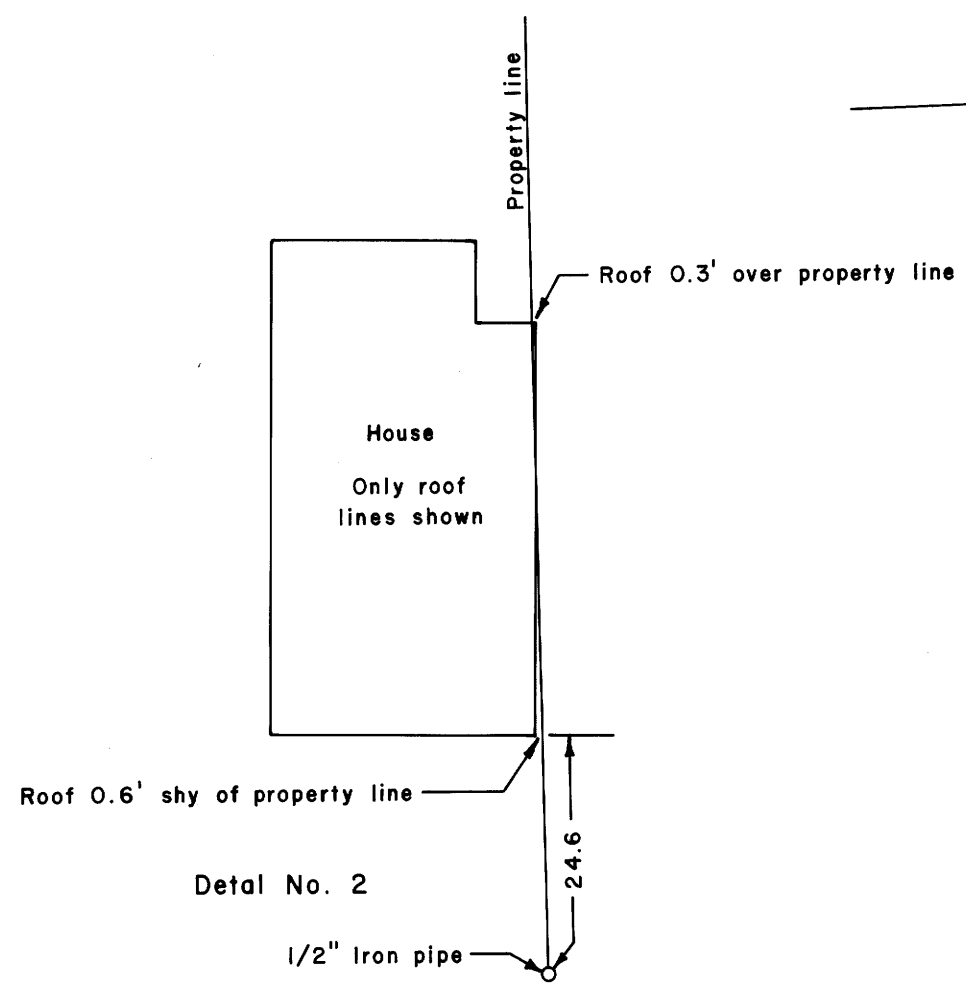
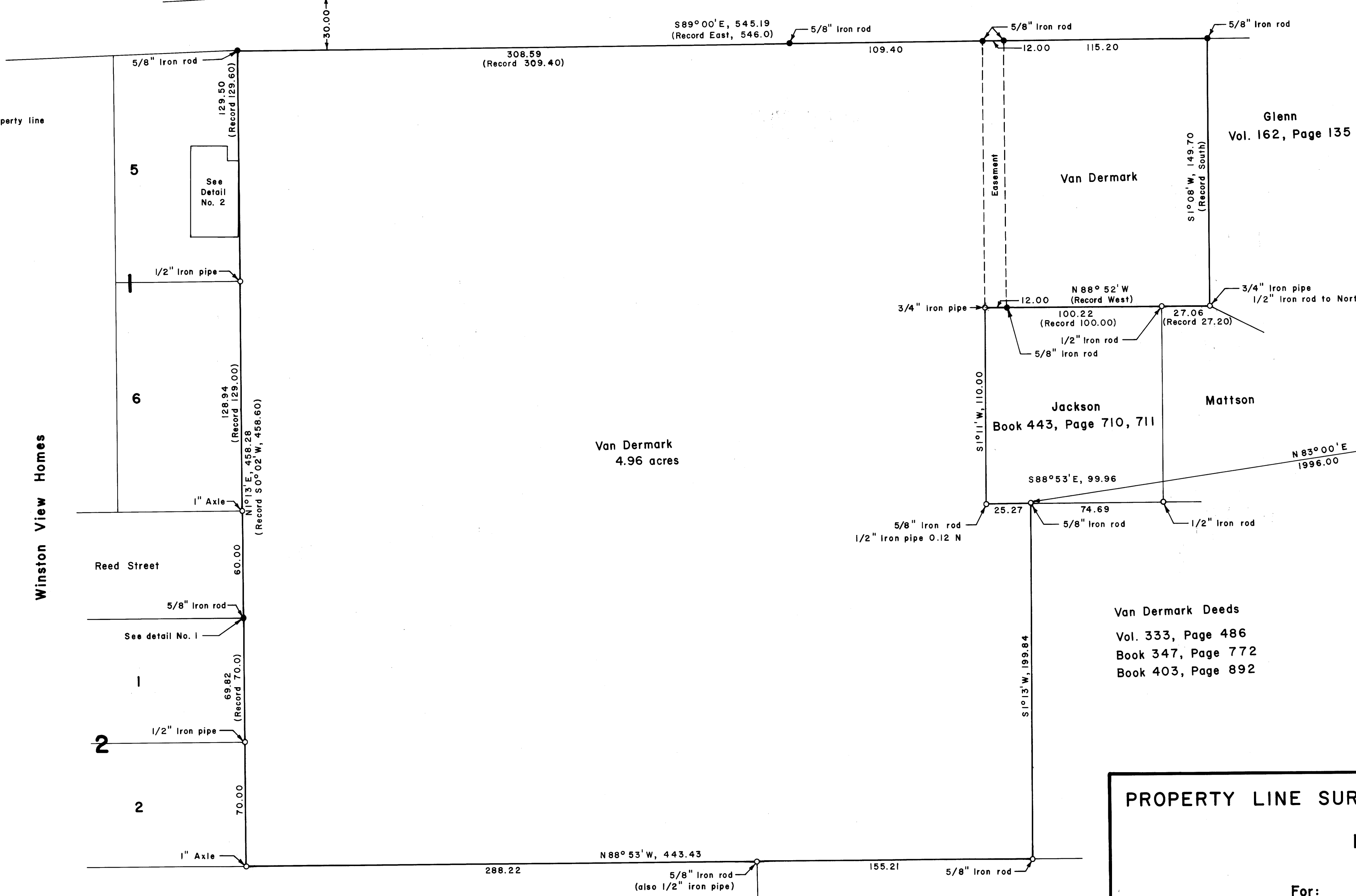
FILED
RECEIVED
JUN 2 1971
COUNTY SURVEYOR
WAGNER COUNTY, OREGON



o Corner found
• Corner set



Right of way Lookingglass Road (Note: Road not built in center of right of way)



Winston View Homes

Van Dermark
4.96 acres

Van Dermark Deeds
Vol. 333, Page 486
Book 347, Page 772
Book 403, Page 892

PROPERTY LINE SURVEY IN NE 1/4, SEC. 21, T. 28S., R. 6 W., W. M.
IN THE CITY OF WINSTON

For: Harry L. and Imalee Van Dermark
By: Bruce A. Shaner

For previous survey information see County Survey Map M 28-13

May 29, 1971

COUNTY SURVEYORS FILE DATA
DO NOT REMOVE FROM OFFICE