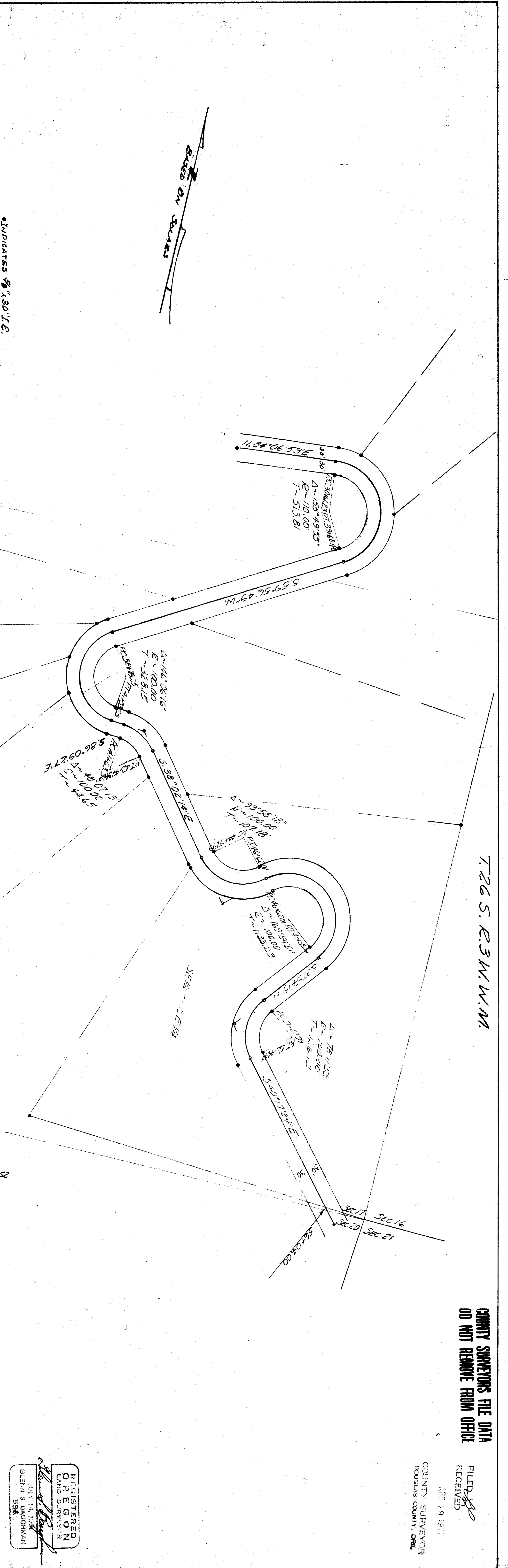
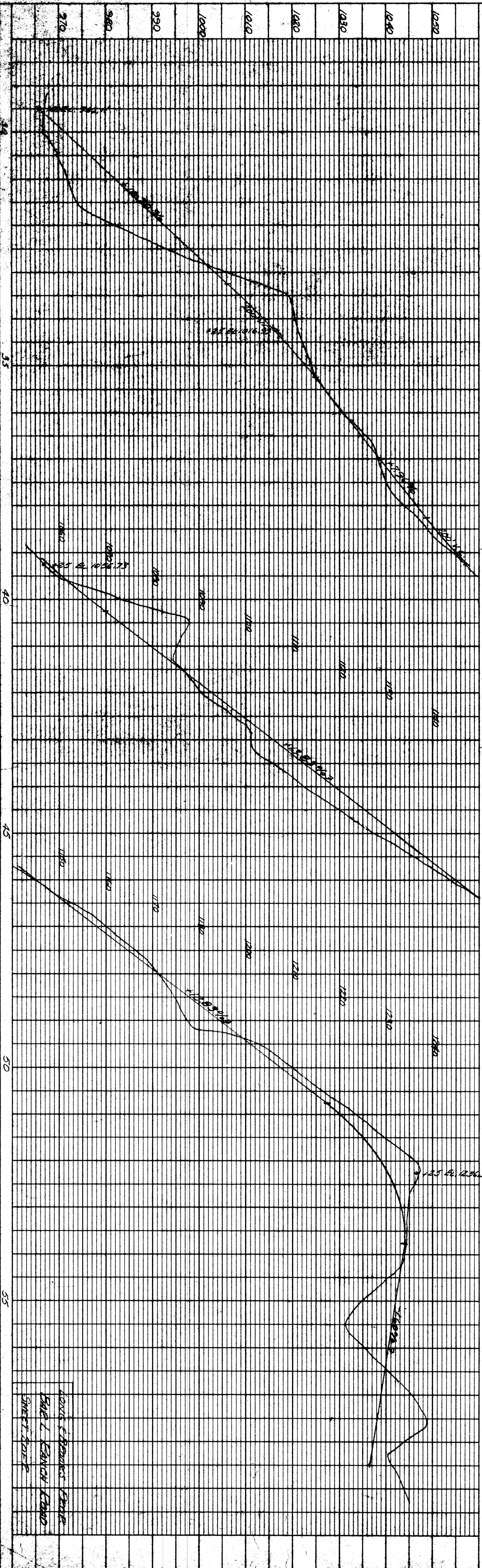




<b>PLAN</b>	REVISED	BY	DATE
NOTE BOOK	NUMBER		
No.	OF WAY CHANGES		

<b>PROFILE</b>	REVISED	BY	DATE
NOTE BOOK	NUMBER		
No.	OF WAY CHANGES		



COUNTY SURVEYORS FILE DATA

PLATE 1 - SINGLE PLAN AND PROFILE OF R.O.S.E. STANDARD

MAP FILE 11-28-54

LOUIS F. BAUGHMAN'S EVIDENCE  
 SALES & EXHIBIT BOARD  
 STREET BOARD

REGISTERED  
 OREGON  
 LAND SURVEYOR  
 GLENN S. BAUGHMAN  
 596

COUNTY SURVEYORS FILE DATA  
 DO NOT REMOVE FROM OFFICE

FILED  
 RECEIVED  
 MAY 29 1971  
 COUNTY SURVEYOR  
 JOHNSON COUNTY, ORE.

COUNTY SUPERVISORS FILE DATA  
DO NOT REMOVE FROM OFFICE

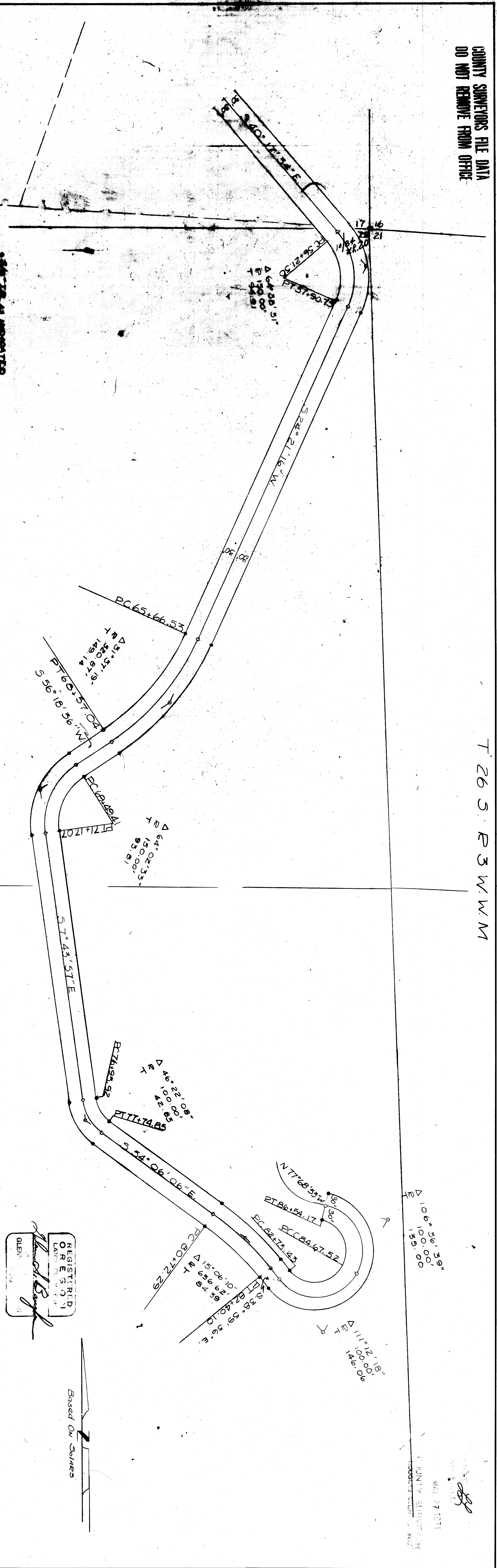
T 26 S R 3 W W 1

Δ 109° 56' 39"  
150.00  
155

MADE AND PRINTED IN U.S.A.  
COUNTY SUPERVISORS  
FILE DATA

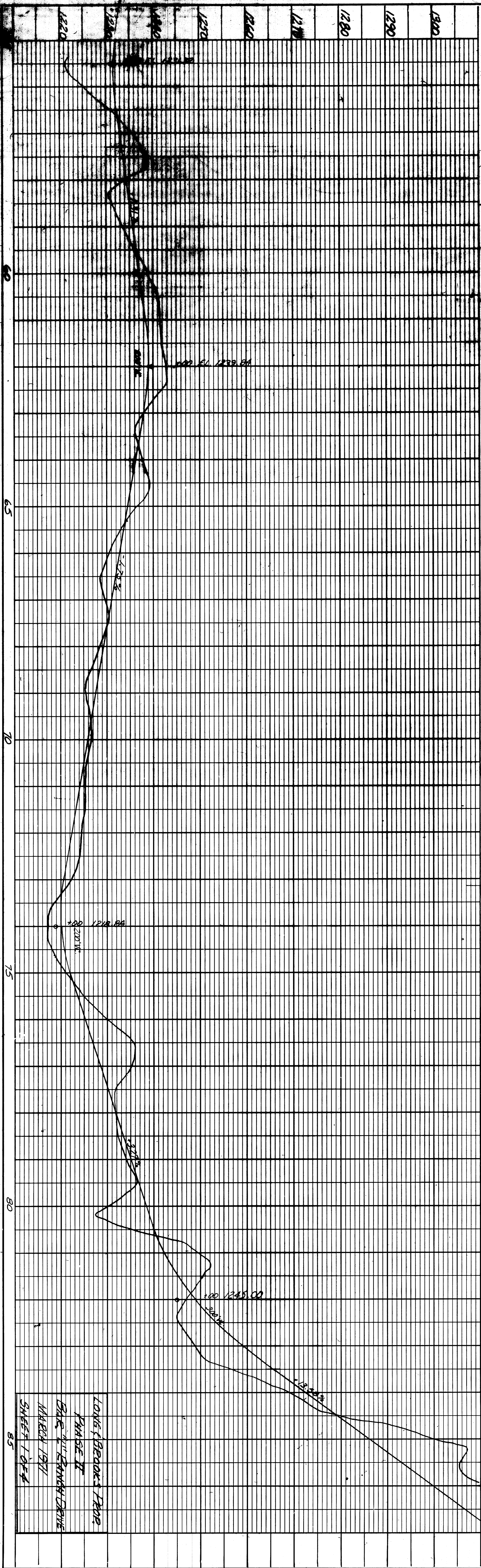
PLAN	DATE
SURVEYOR	
PLAT	
NOTE BOOK	
NO.	

PROFILE	DATE
SURVEYOR	
PLAT	
NOTE BOOK	
NO.	



REGISTERED  
SURVEYOR  
GLEN

Based On Solvers



LONG BEARDS LEG  
PHASE II  
BASED ON PLANNING DRAWING  
MARCH 1977  
SHEET 1 OF 2

PLATE 1 - PLAN - PROFILE  
MADE AND PRINTED IN U.S.A.  
COUNTY SUPERVISORS FILE DATA

COUNTY SUPERVISORS FILE DATA  
DO NOT REMOVE FROM OFFICE  
M 42-210



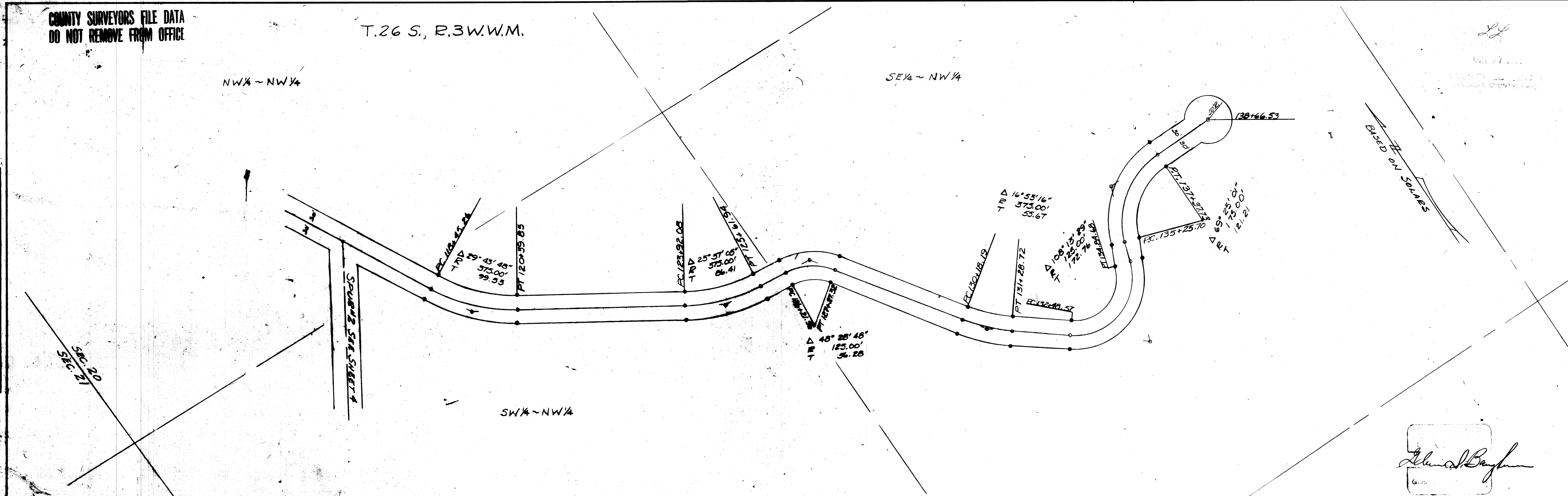
COUNTY SURVEYORS FILE DATA  
DO NOT REMOVE FROM OFFICE

T.26 S., R.3 W.W.M.

NW 1/4 - NW 1/4

SE 1/4 - NW 1/4

DATE	
BY	
PLAN	
NO. OF SHEETS	
NO. OF THIS SHEET	
NO.	



• INDICATES 3/8" x 30" I.P.

DATE	
BY	
PROFILE	
NO. OF SHEETS	
NO. OF THIS SHEET	
NO.	

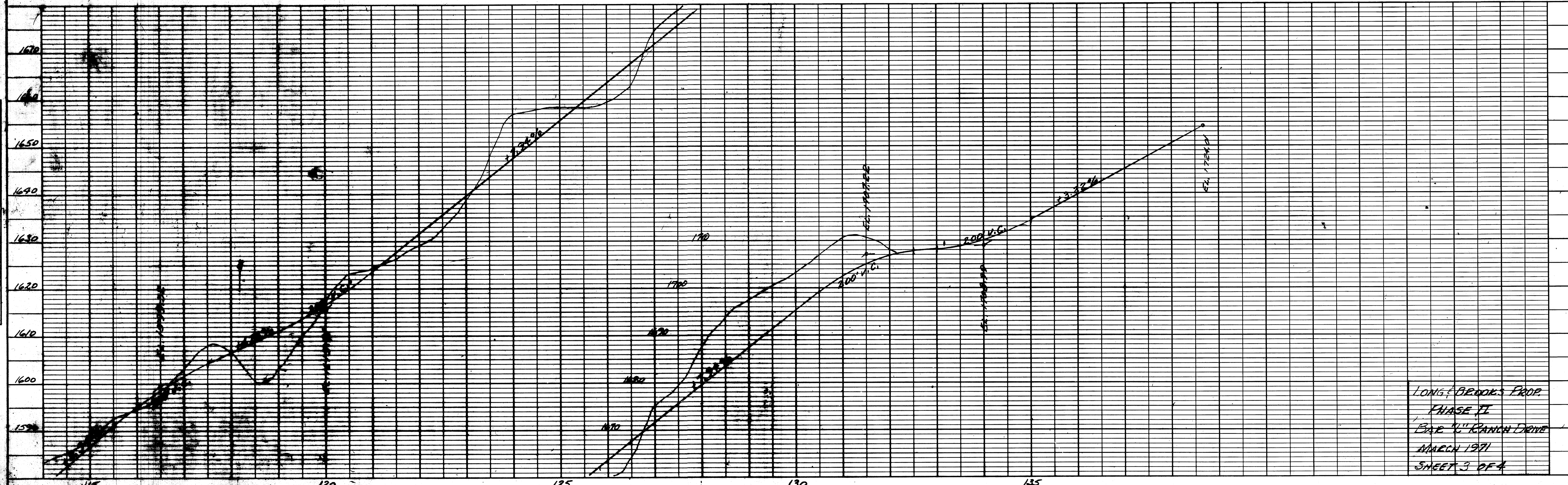


PLATE 1-PLAN-PROFILE APPROX.  
MADE AND PRINTED IN U.S.A.  
CHARLES HERRING COMPANY

COUNTY SURVEYORS FILE DATA  
DO NOT REMOVE FROM OFFICE

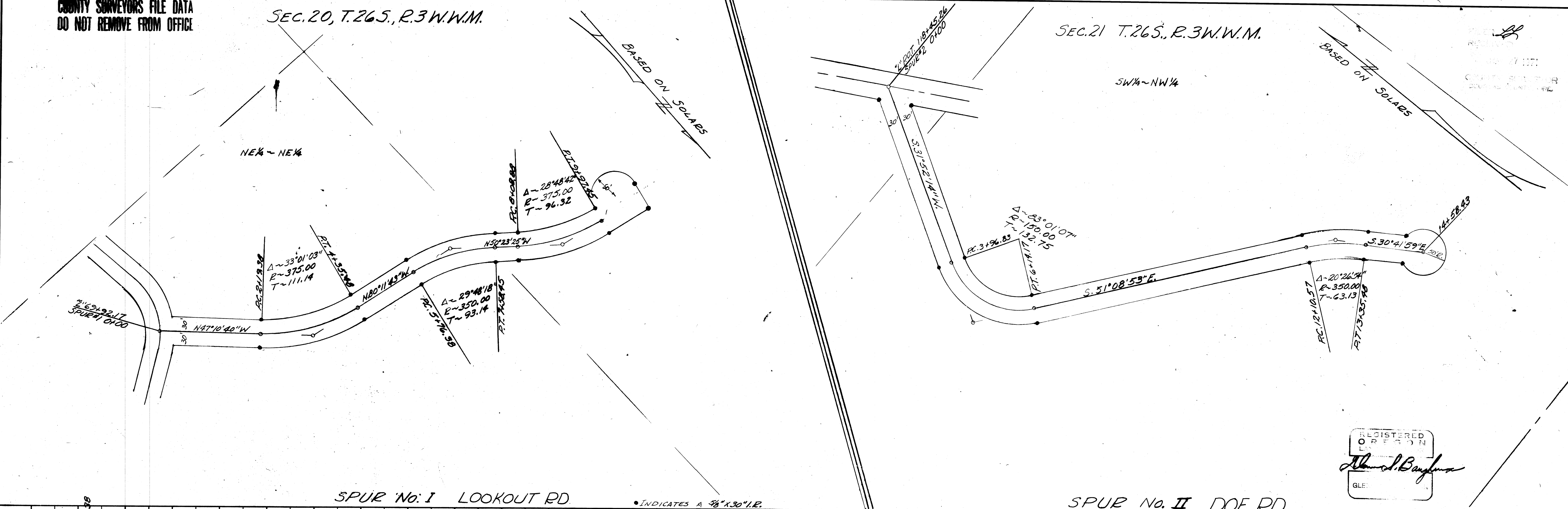
M 42 - 21E

COUNTY SURVEYORS FILE DATA  
DO NOT REMOVE FROM OFFICE

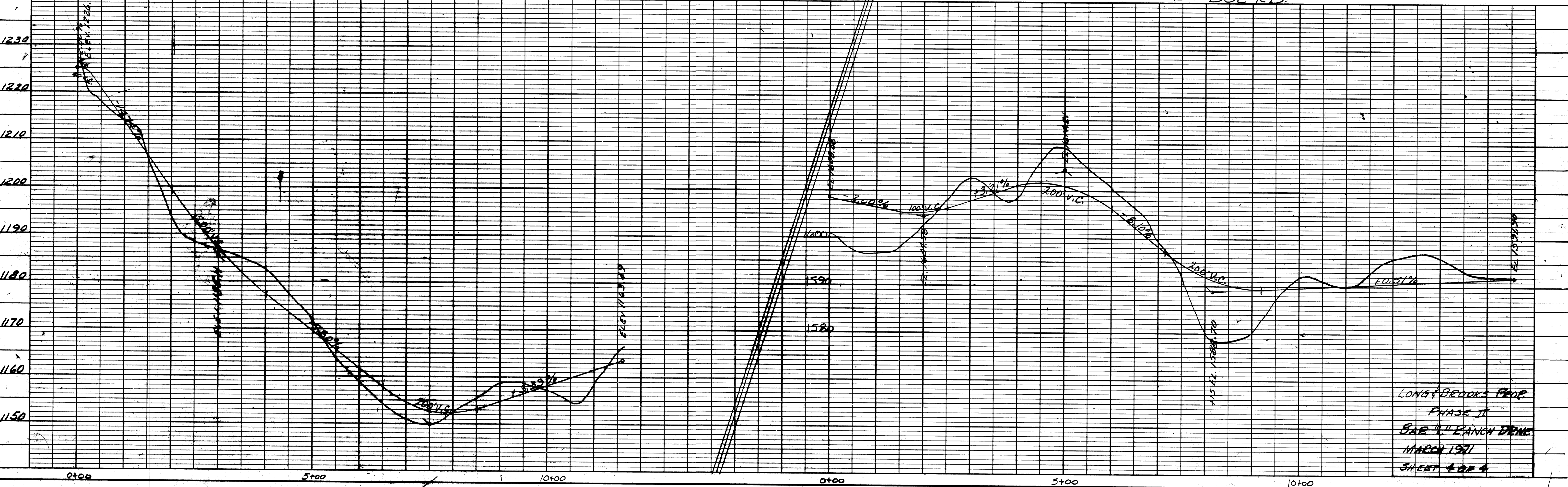
SEC. 20, T. 26 S., R. 3 W. W.M.

SEC. 21 T. 26 S., R. 3 W. W.M.

DATE	
BY	
SURVEYED	
PLAN	
NOTE BOOK	
ALIGNED CHECKED	
BY	
HT. OF WAY CHECKED	
NO.	



DATE	
BY	
SURVEYED	
PROFILE	
NOTE BOOK	
GRADES CHECKED	
BY	
HT. OF WAY CHECKED	
NO.	



REGISTERED  
OPERATION  
ALBERT BAUFMAN  
GLE

LONGBROOKS PROP  
PHASE II  
BAR 4 RANCH DRIVE  
MARCH 1971  
SHEET 4 OF 4