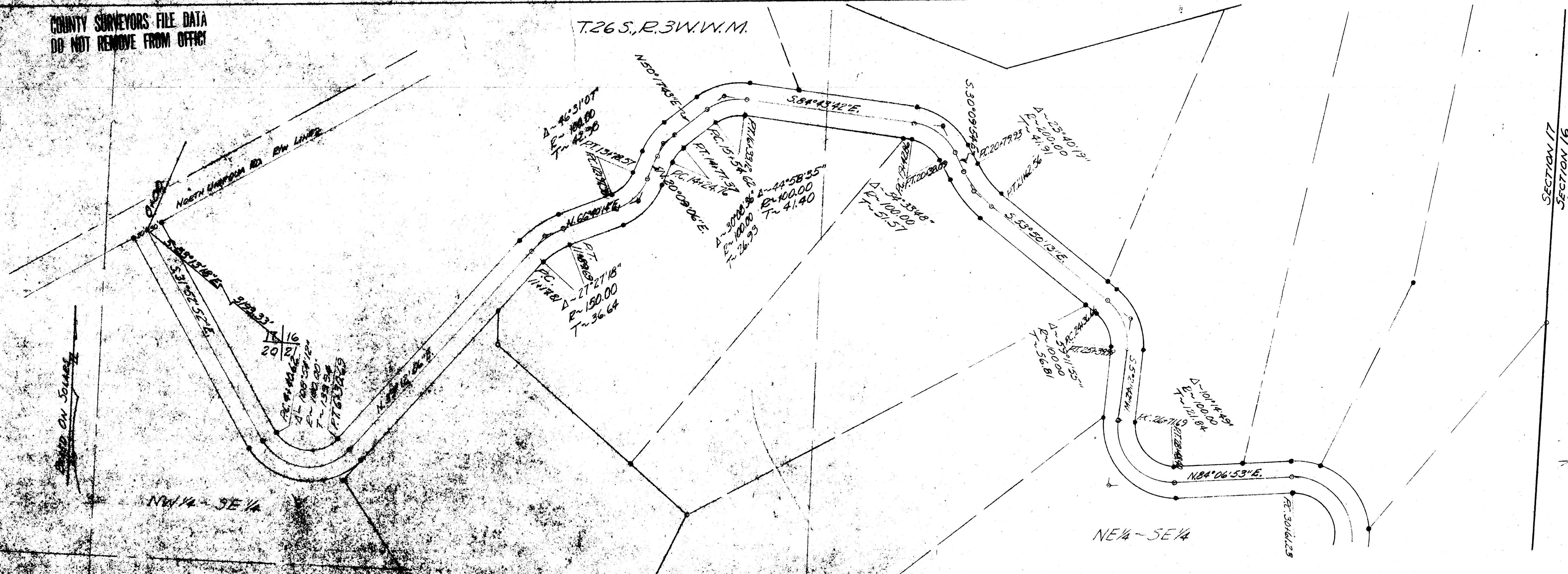


COUNTY SURVEYORS FILE DATA
DO NOT REMOVE FROM OFFICE

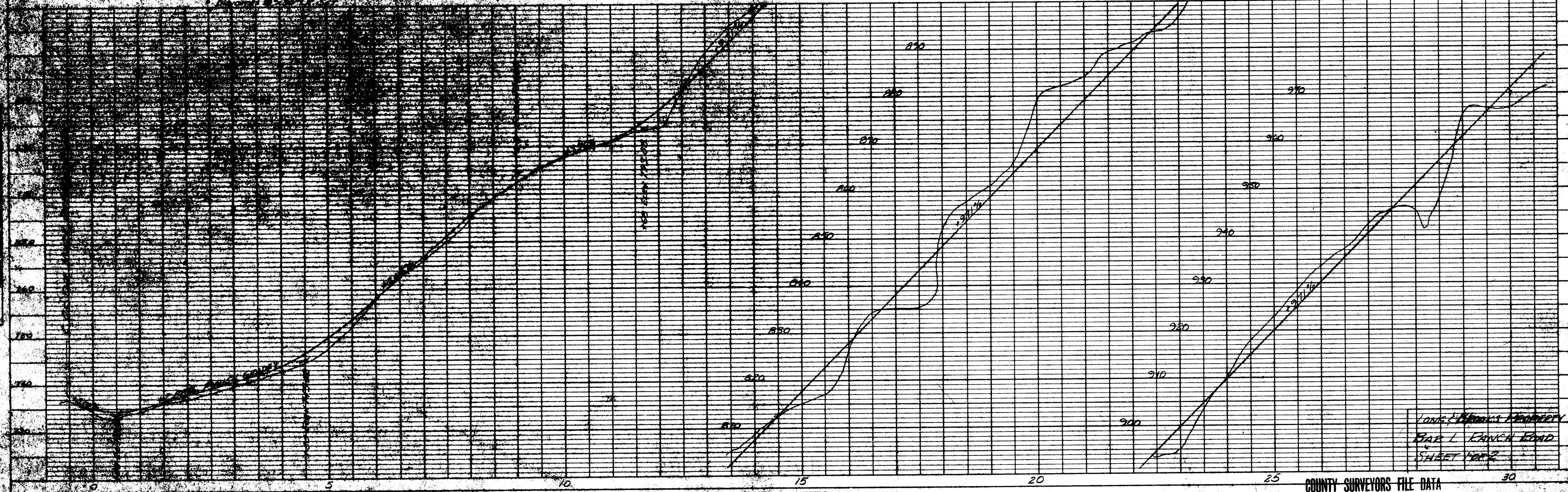
T.26 S., R.3 W., W.M.

FILED
RECEIVED
APR 29 1971
COUNTY SURVEYOR
DOUGLAS COUNTY, ORE.



SECTION 17
SECTION 16

REGISTERED
OREGON
LAND SURVEYOR
Allen S. Baughman
JULY 14, 1964
GLENN S. BAUGHMAN
536



LONG'S BROTHERS PROPERTY
BAR I CHURCH ROAD
SHEET 1002

PLATE 1—SINGLE PLAN AND PROFILE S. P. R. & S. STANDARD
NO. 1004—1/4"=100' AND TRANSVERSE—MADE AND PRINTED IN U.S.A.
THE LITTLE CO., SAN FRANCISCO, CALIFORNIA

COUNTY SURVEYORS FILE DATA
DO NOT REMOVE FROM OFFICE

30