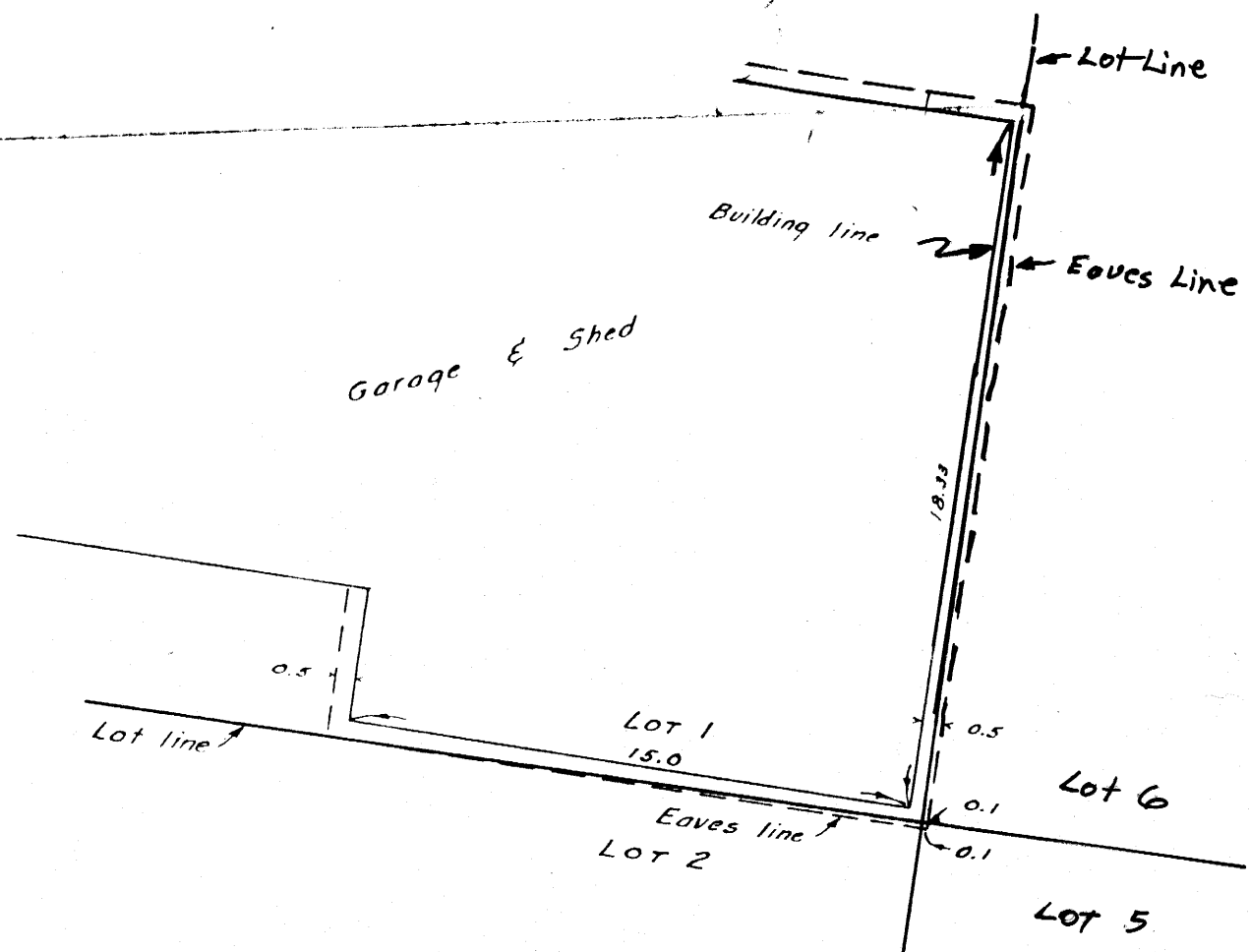
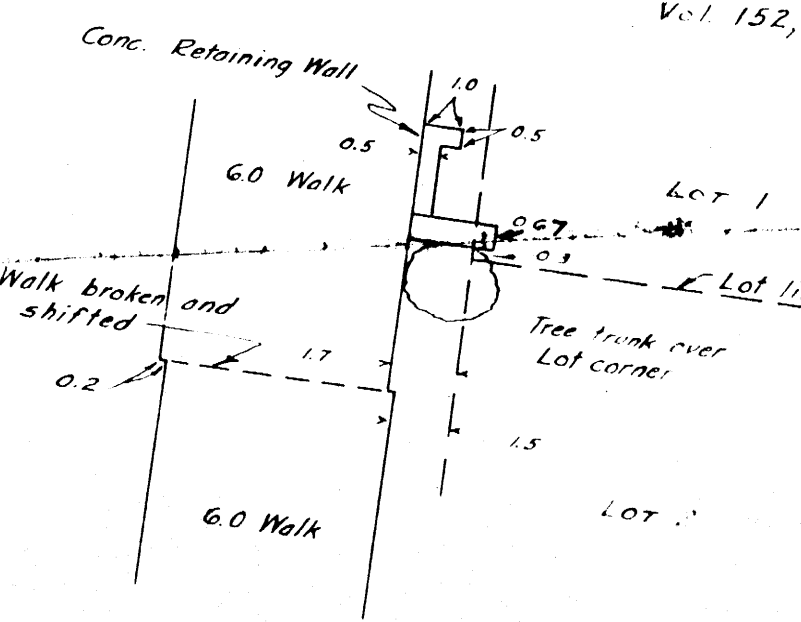


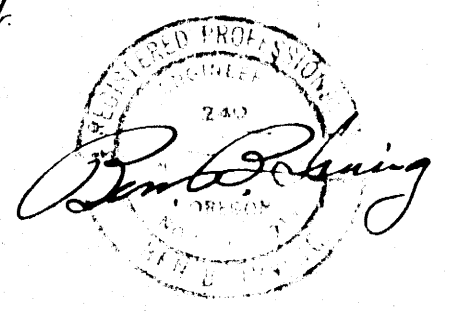
67-24 W
O.S. 43/161



NOTE: Bearings and distances as shown are, unless otherwise noted, taken from the map of First Oakhill Addition to Roseburg, as plotted and filed in the County Clerk's Office, Douglas County, Oregon. Distances shown on buildings, etc., are measured.

To ALL PARTIES INTERESTED IN TITLE TO PREMISES SURVEYED:
At the time of the platting of the First Oakhill Addition to Roseburg a correct survey was made, and proper monuments were set, by the undersigned engineer. At the date of the present survey, monuments as shown hereon were found, and data as shown was measured therefrom.

Ben B. Irving
Registered Professional Engineer



COUNTY SURVEYOR'S OFFICE
DOUGLAS COUNTY, OREGON

LOTS 2-6 INCL., BLOCK 2, OF
FIRST OAKHILL ADDITION TO
ROSEBURG, OREGON, AND FACIL-
ITIES IN VICINITY.

BEN. B. IRVING
SURVEYED OCT. 10, 1949

COUNTY SURVEYOR
SCALE 1"=20'

THIS COPY MADE FROM
A XEROX 2510
DATE Aug 2 89

C.S. 43/161
M 42-19