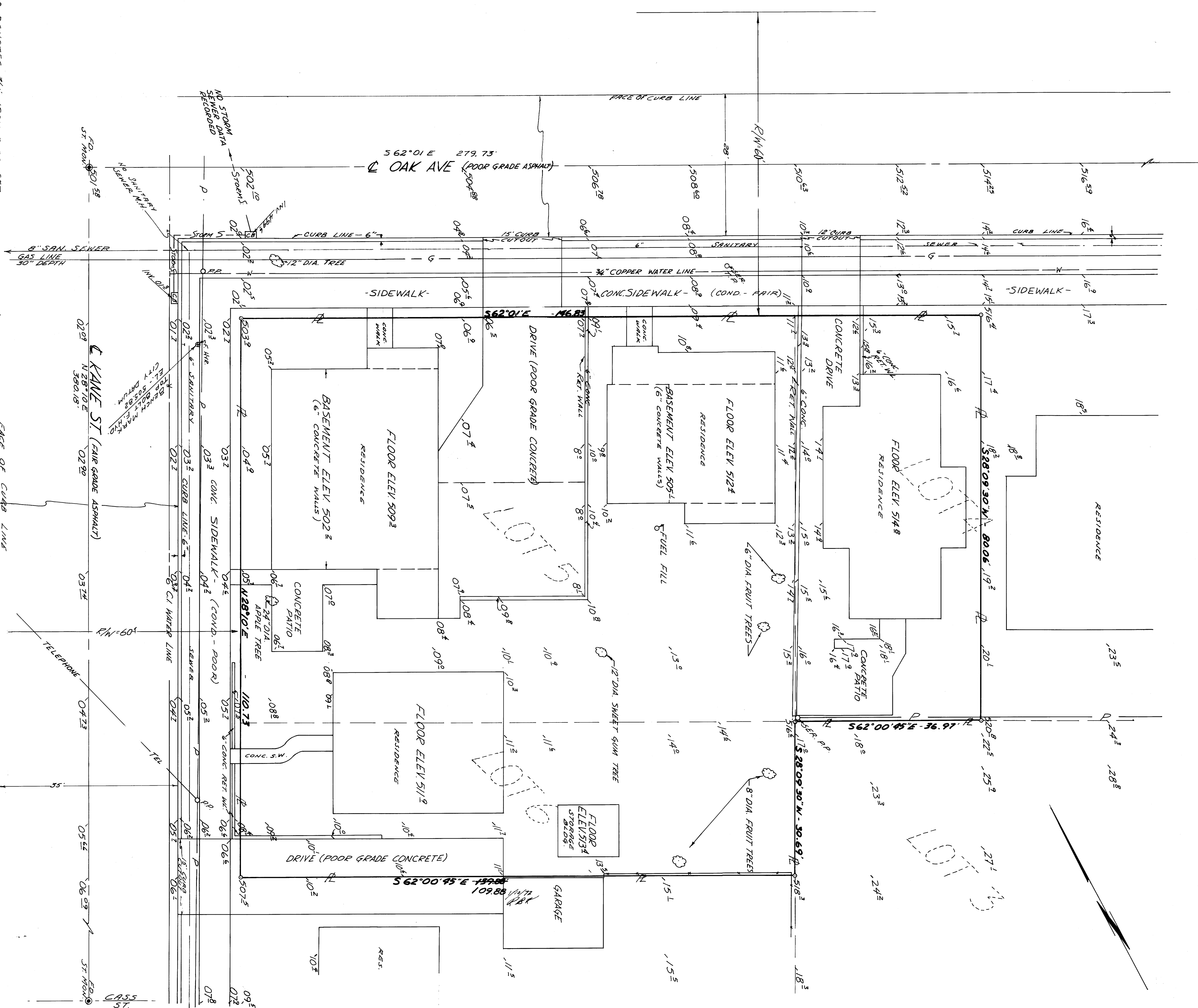


# DOUGLAS NATIONAL BANK PROPERTY

## IN LOTS 4, 5 & 6, BLOCK 41, CITY OF ROSEBURG

COUNTY SUPERVISORS FILE DATA  
DO NOT REMOVE FROM OFFICE

SURVEYED FOR: DOUGLAS NAT. BANK      DATE: FEB. 1971  
SURVEYED BY: W. S. BARNES      SCALE: 1/4" = 10 FT



DENOTES 3/4" IRON RODS SET  
 BASE BEARING TAKEN FROM CHADWICK ST.  
 REFR. CS 37 / 67  
 COUNTY SUPERVISORS FILE DATA  
 DO NOT REMOVE FROM OFFICE

