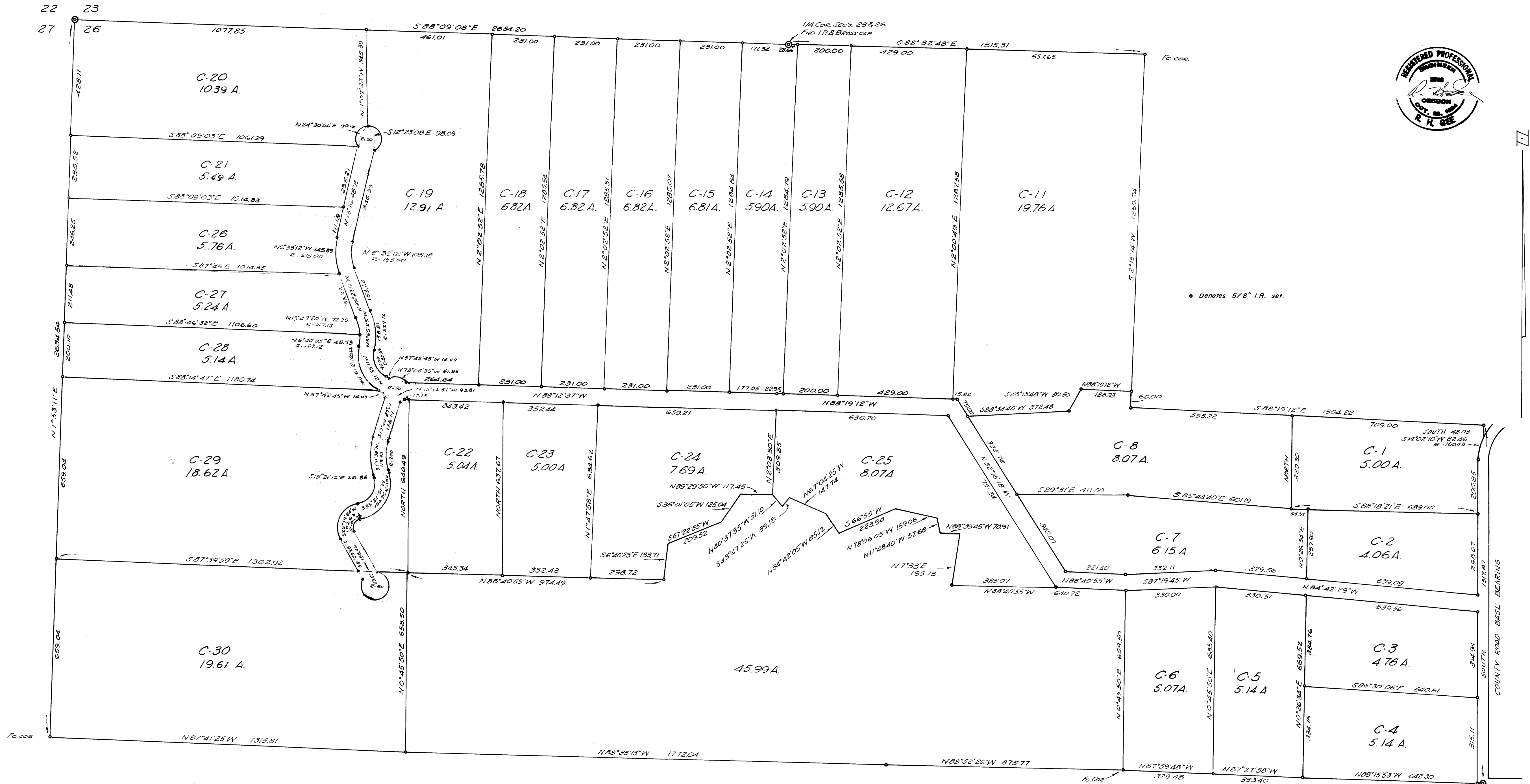


COUNTY SURVEYORS FILE DATA  
DO NOT REMOVE FROM OFFICE

FILED  
RECEIVED

SURVEY IN SECTION 26, T.26 S., R.7 W., W.M.  
SURVEYED FOR CLEVELAND - WEST, OREG., LTD.  
SURVEYED BY R. H. GEE - APRIL, 1969 & SEPTEMBER, 1970  
SCALE 1" = 200'

COUNTY SURVEYOR  
CLATSOP COUNTY, OREGON



o Denotes 5/8" I.R. set.

COUNTY SURVEYORS FILE DATA  
DO NOT REMOVE FROM OFFICE

1/4 Cor. Secs 25 & 26  
3/4" I.R. FND.