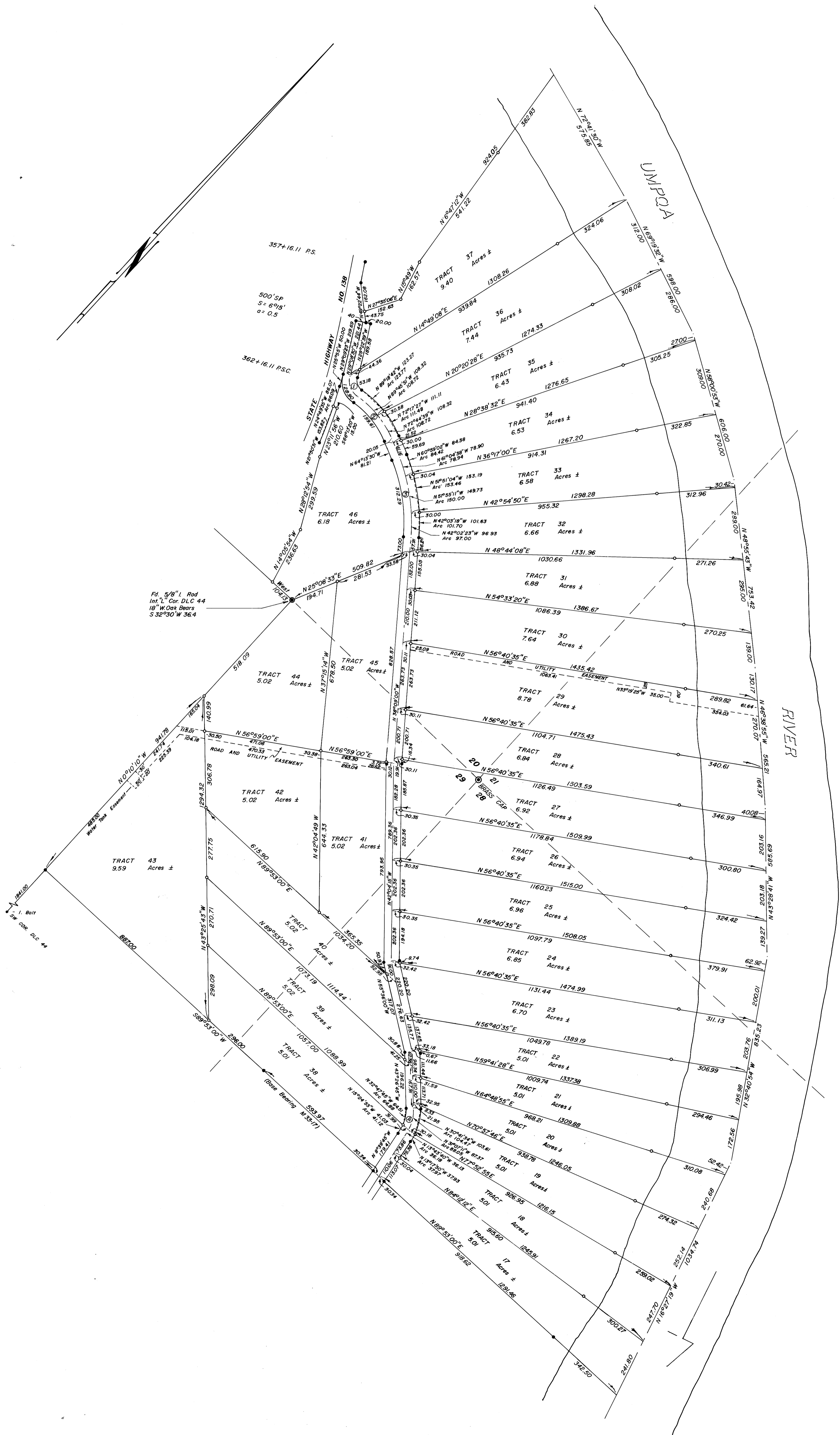


SURVEY IN SECTIONS 20, 21, 28, & 29, TOWNSHIP 23 SOUTH, RANGE 7 WEST, WILLAMETTE MERIDIAN  
Surveyed for D & S Development Co. by Don E. Garrett

November 1970

Scale 1" = 200'

- - Set 5/8" Iron Rod
- - Found 5/8" Iron Rod



☉ CURVE DATA

- ① D = 79° 26' 23"  
L = 72° 18' 30"  
R = 72.14  
T = 52.71  
L = 31.04
- ② D = 15° 39' 22"  
L = 34° 02' 30"  
R = 365.96  
T = 112.03  
L = 217.44
- ③ D = 6° 00'  
L = 26° 04' 30"  
R = 716.20  
T = 165.64  
L = 325.94
- ④ D = 28° 00'  
L = 34° 42'  
R = 204.63  
T = 64.09  
L = 124.23

REGISTERED  
OREGON  
LAND SURVEYOR  
*Don E. Garrett*  
JULY 14, 1961  
DON E. GARRETT  
544

M 42 - 11