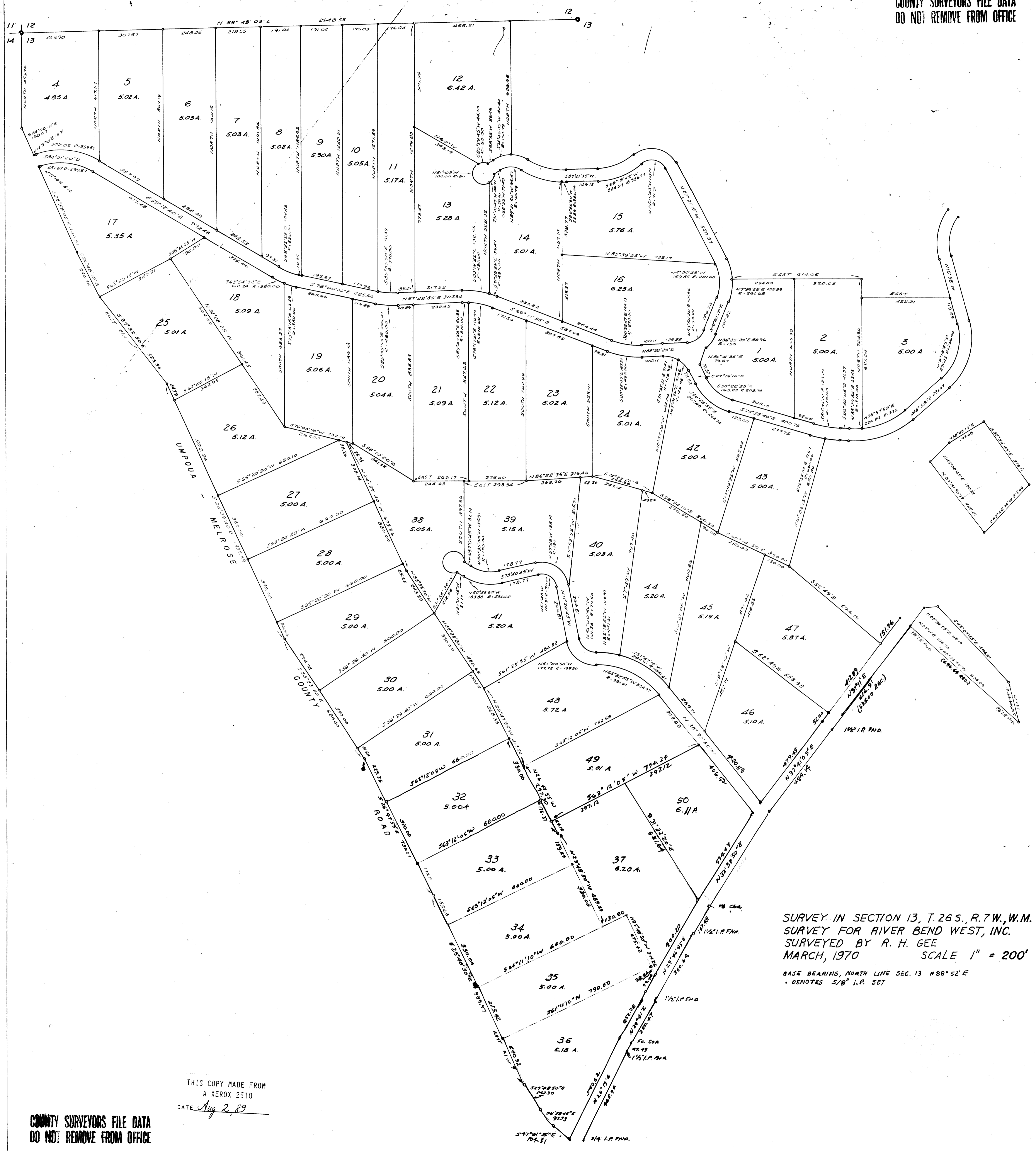


COUNTY SURVEYORS FILE DATA  
DO NOT REMOVE FROM OFFICE

FILED RECEIVED

DEC 8 1970  
COUNTY SURVEYOR  
DOUGLAS COUNTY, ORE.



SURVEY IN SECTION 13, T.26S., R.7W., W.M.  
 SURVEY FOR RIVER BEND WEST, INC.  
 SURVEYED BY R. H. GEE  
 MARCH, 1970 SCALE 1" = 200'

BASE BEARING, NORTH LINE SEC. 13 N88°52'E  
 • DENOTES 5/8" I.P. SET

THIS COPY MADE FROM  
 A XEROX 2510  
 DATE Aug 2, 89

COUNTY SURVEYORS FILE DATA  
 DO NOT REMOVE FROM OFFICE