

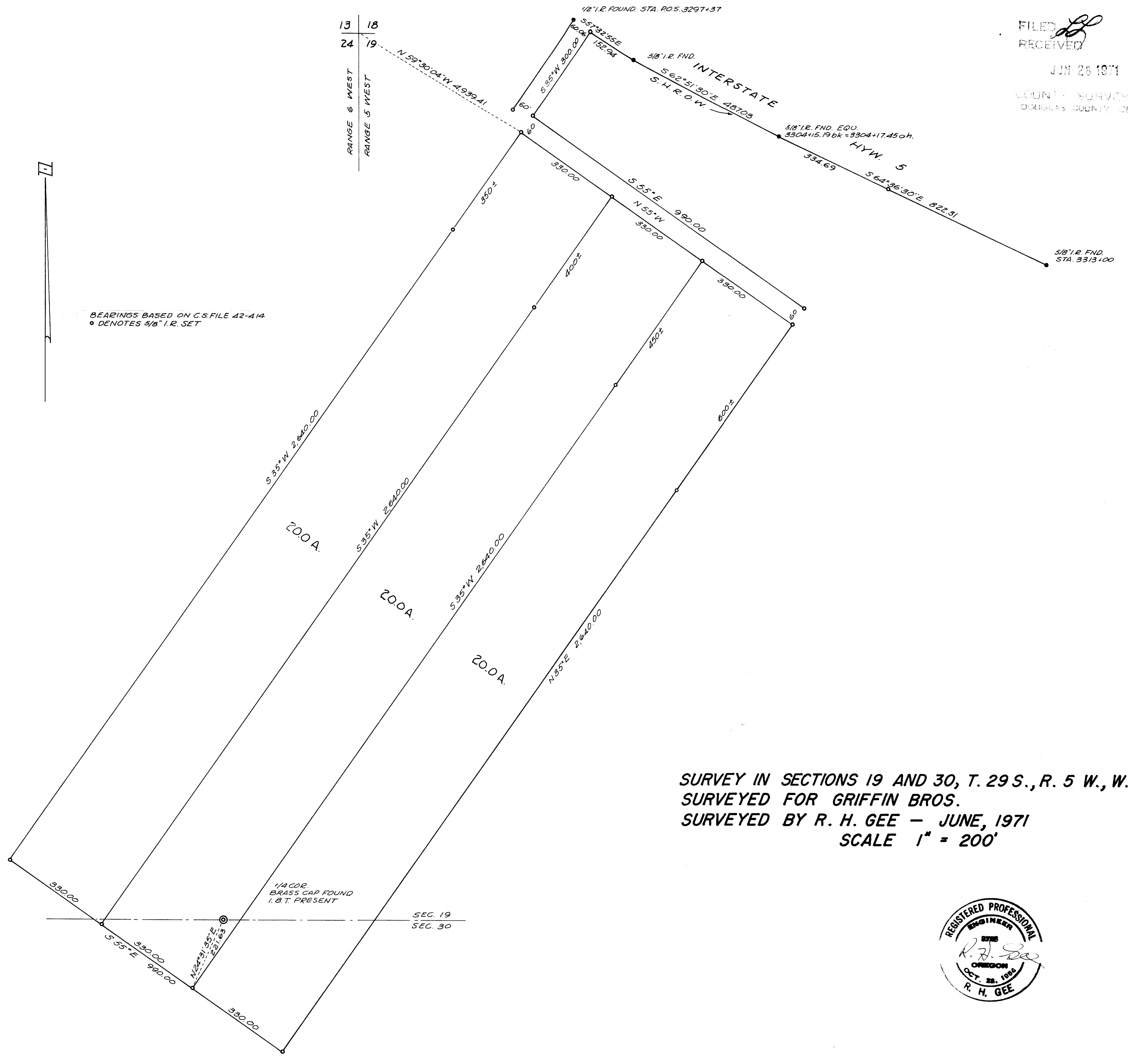
M 41 - 79

FILED
RECEIVED

JUN 26 1971

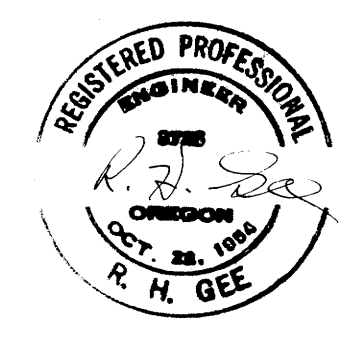
COUNTY SURVEYOR
DOUGLAS COUNTY, ORE.

13 | 18
24 | 19
RANGE 6 WEST
RANGE 5 WEST



BEARINGS BASED ON C.S. FILE 42-414
• DENOTES 5/8" I.R. SET

**SURVEY IN SECTIONS 19 AND 30, T. 29 S., R. 5 W., W.M.
SURVEYED FOR GRIFFIN BROS.
SURVEYED BY R. H. GEE - JUNE, 1971
SCALE 1" = 200'**



**COUNTY SURVEYORS FILE ONLY
DO NOT REMOVE FROM OFFICE**

M 41 - 79