

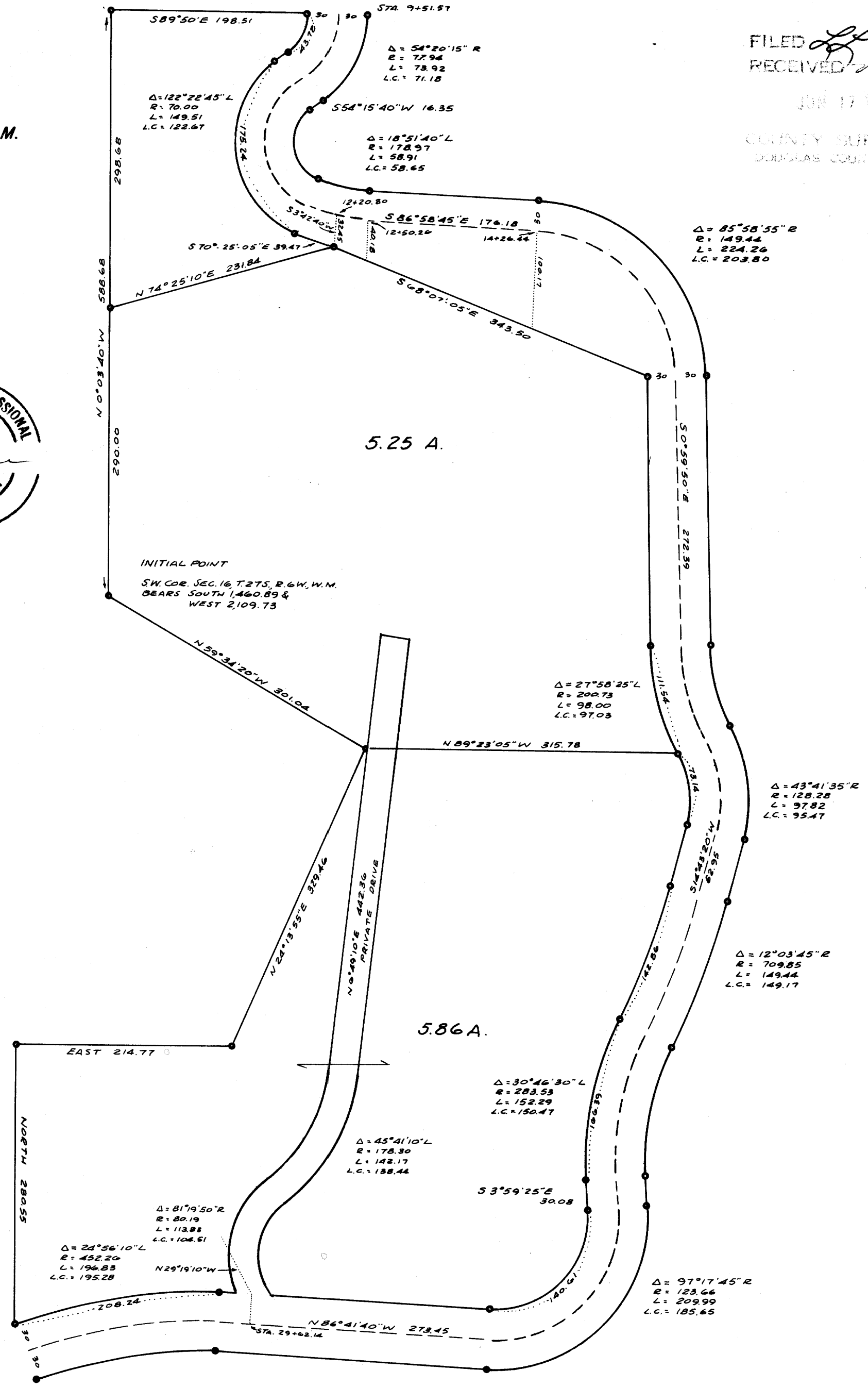
SURVEY IN SECTION 16, T. 27 S., R. 6 W., W. M.
SURVEYED FOR JOHN BELL
SURVEYED BY R. H. GEE
DECEMBER, 1970
SCALE 1" = 100'

BEARINGS BASED ON C.S. FILE (M 23-32)
DENOTES 5/8" I.R. FOUND
DENOTES 5/8" I.R. SET

FILED
RECEIVED

JUN 17 1971

COUNTY SURVEYOR
DOUGLAS COUNTY, ORE.



COUNTY SURVEYORS FILE DATA
DO NOT REMOVE FROM OFFICE