

FILED RECEIVED

JUN 15 1971

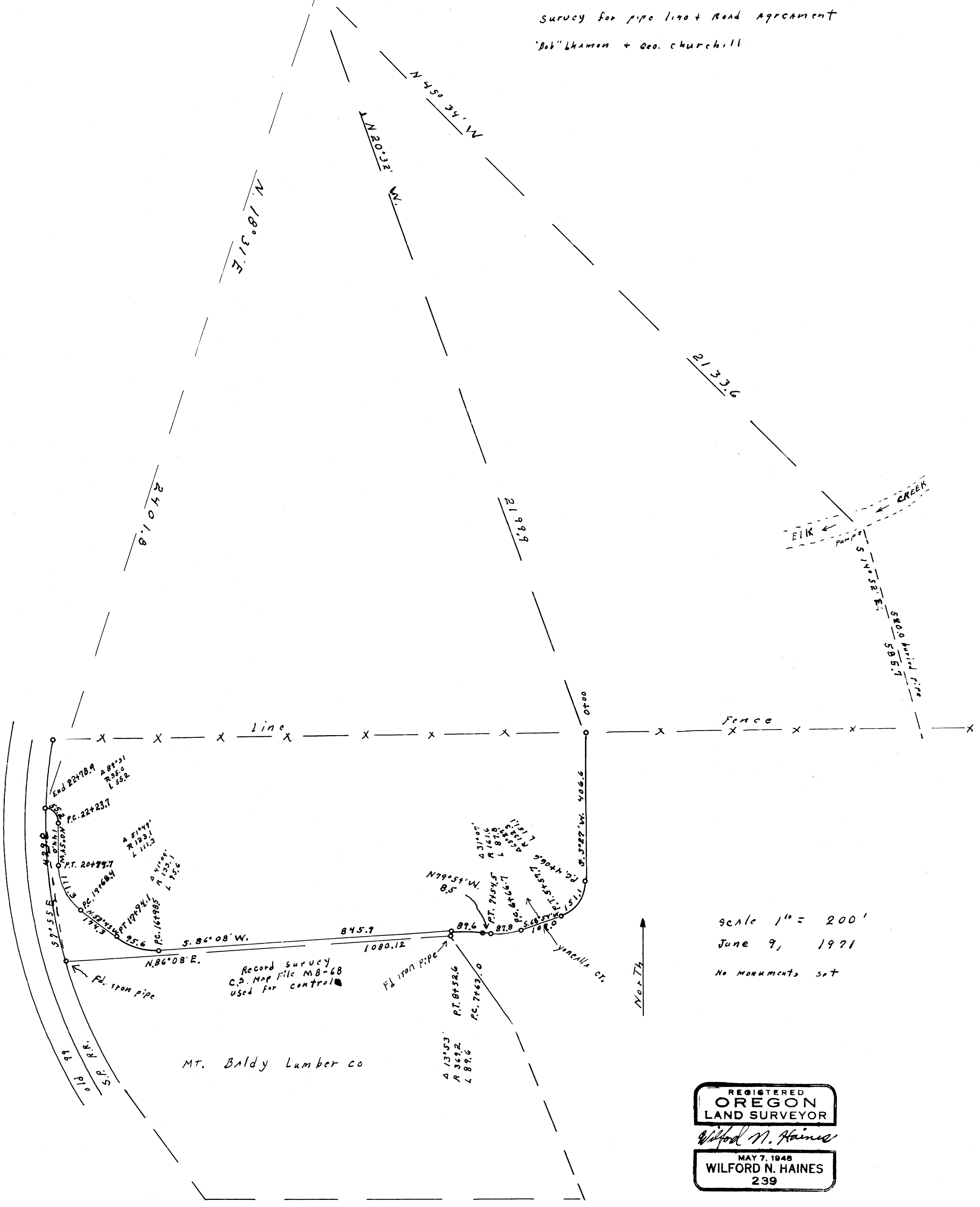
COUNTY SURVEYOR DOUGLAS COUNTY, ORE

COUNTY SURVEYORS FILE DATA DO NOT REMOVE FROM OFFICE

N.W CORNER JESSE APPLGATE DLC No 38 SECTION 21 T.22 S. R 5 W. ©

SECT. 21, T.22 S., R 5 W. W.M.

Survey for pipe line + Road Agreement 'Bob' Lhamen + Geo. Churchill



scale 1" = 200' June 9, 1971 No monuments set

REGISTERED OREGON LAND SURVEYOR Wilford N. Haines MAY 7, 1948 WILFORD N. HAINES 239