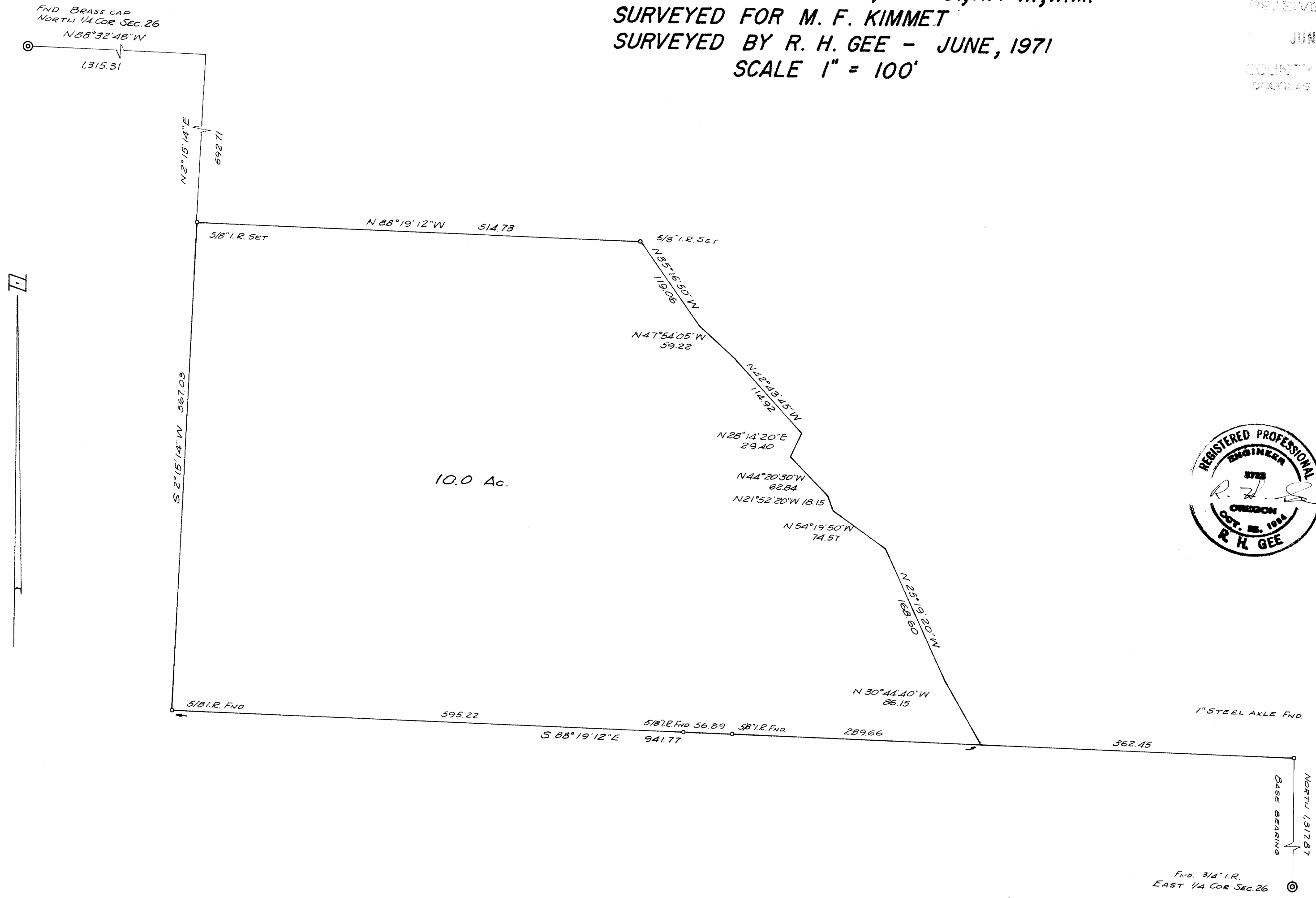


SURVEY IN SECTION 26, T. 26 S., R. 7 W., W.M.  
 SURVEYED FOR M. F. KIMMET  
 SURVEYED BY R. H. GEE - JUNE, 1971  
 SCALE 1" = 100'

FILED *R.H.G.*  
 RECEIVED  
 JUN 1 1971  
 COUNTY SURVEYOR  
 DOUGLAS COUNTY, OREGON



69-17W

M 41 - 69