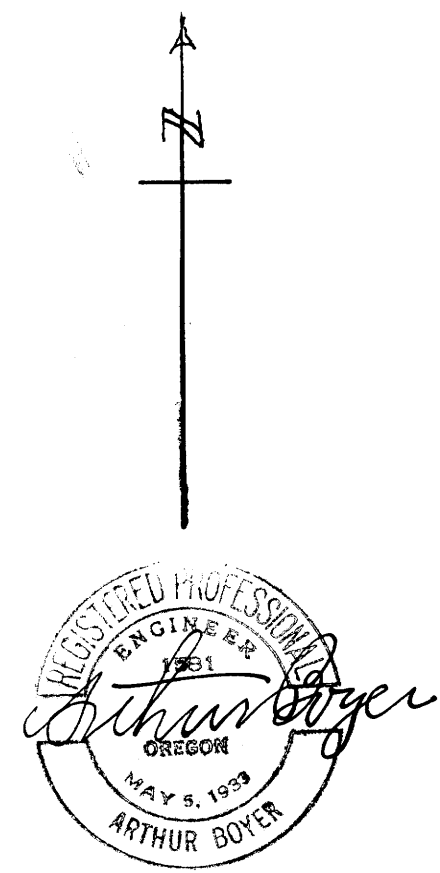
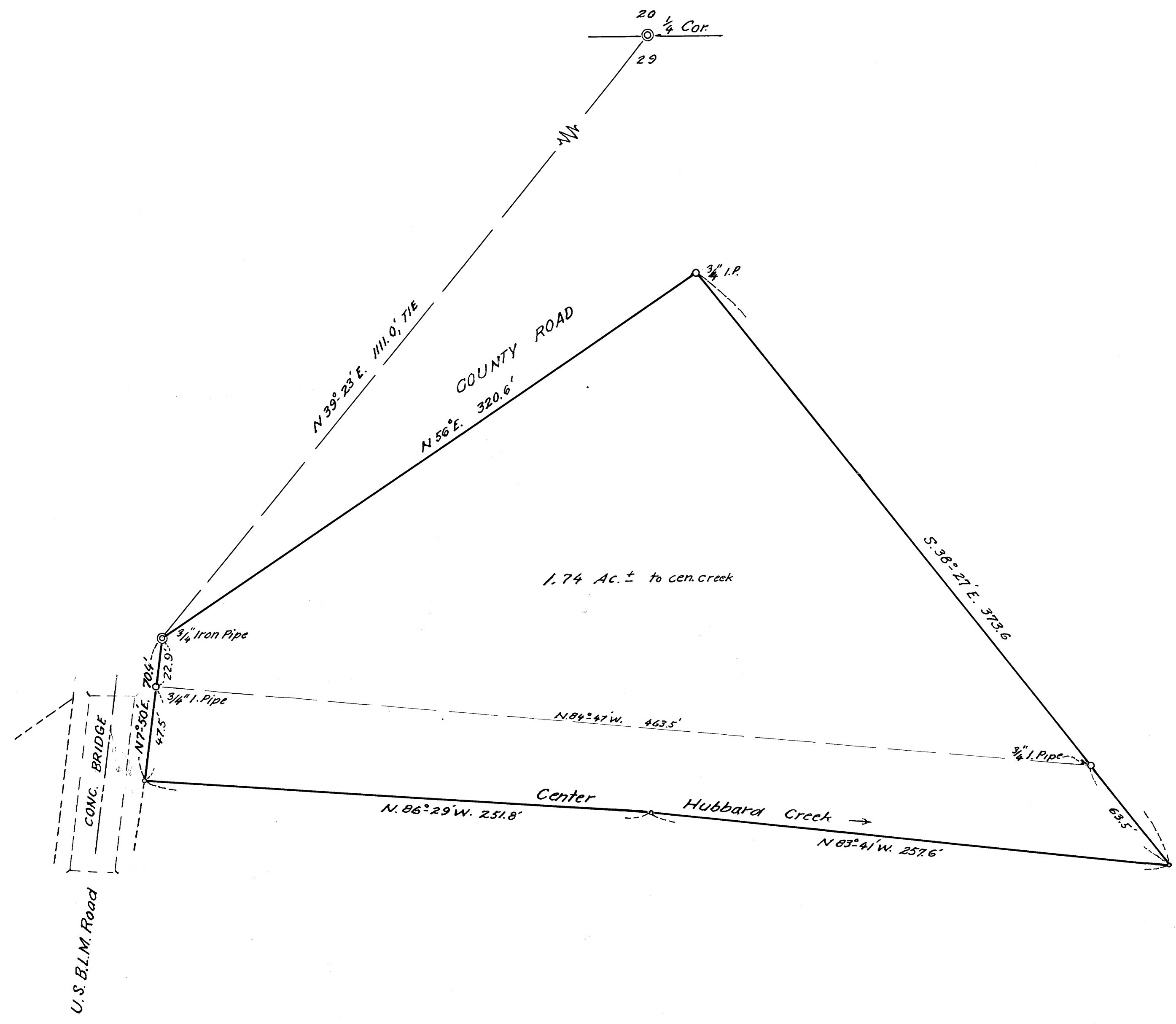


FILED
RECEIVED

JUN 8 1971

COUNTY SURVEYOR
DOUGLAS COUNTY, ORE.

M 41-65



RALPH PEERY & WF, UMPQUA, ORE.
 ACREAGE IN SEC. 29, T.25S; R.7W; W. M;
 BET. COUNTY ROAD & CEN. HUBBARD CK.
 & E. OF CONC. B.L.M. BRIDGE OVER CREEK.
 DOUGLAS COUNTY, ORE.
 June 1971 *RP* 1" = 40 ft.

DO NOT REMOVE FROM OFFICE

M 41-65