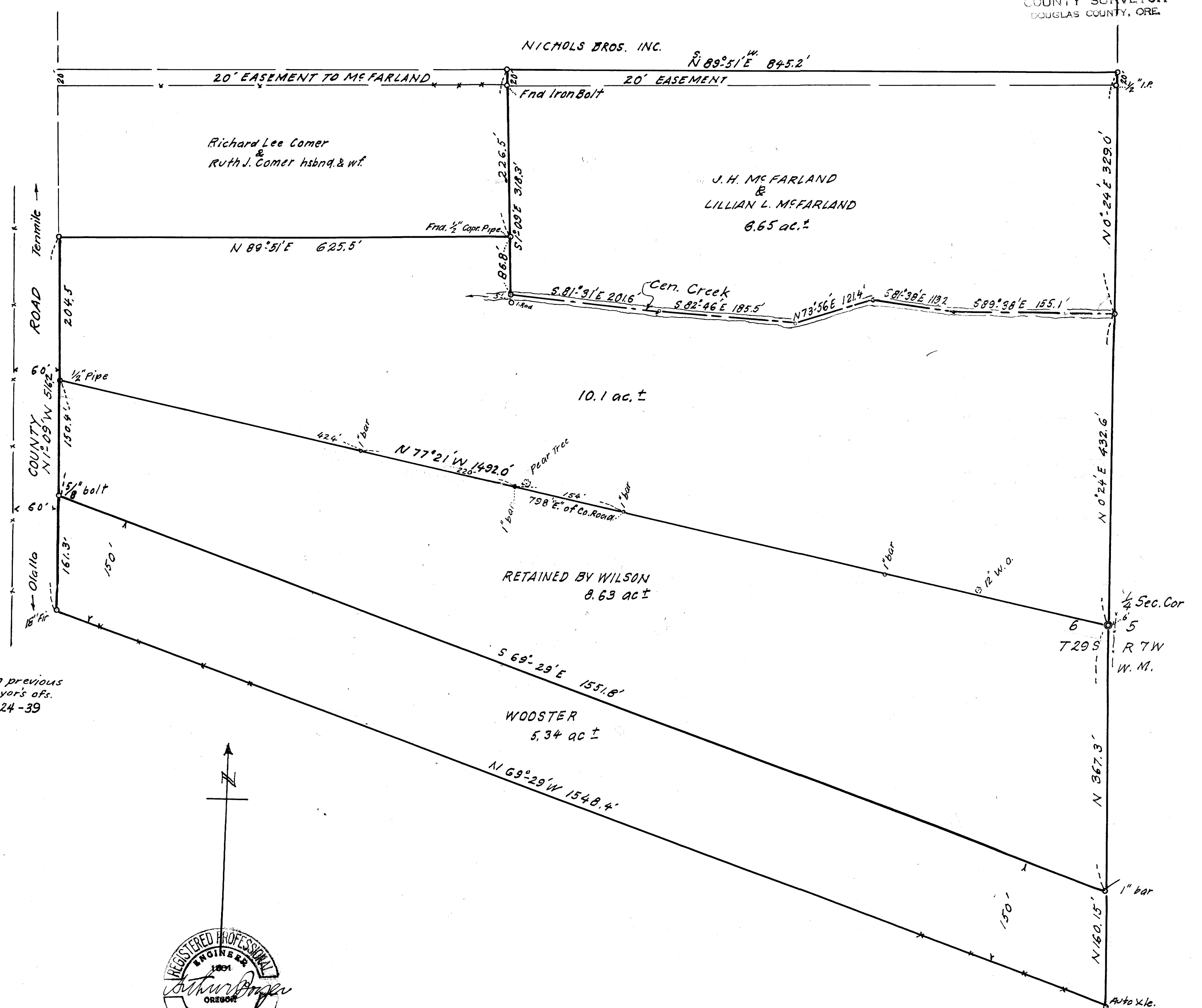


DO NOT REMOVE FROM OFFICE

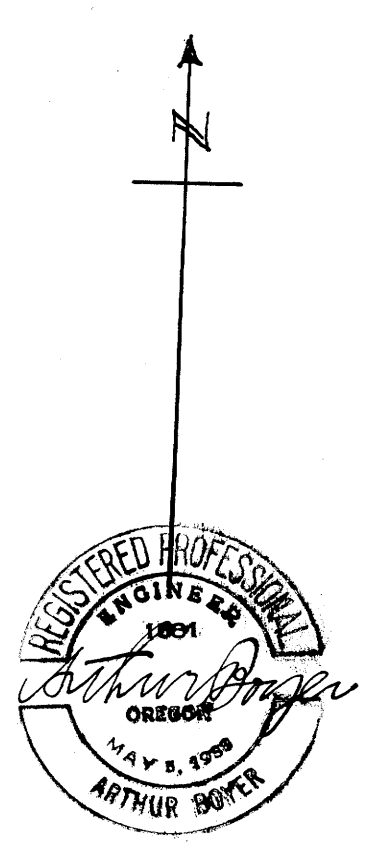
FILED
RECEIVED

JUN 1 1971

COUNTY SURVEYOR
DOUGLAS COUNTY, ORE.



Bearings based on previous survey by Co. Surveyor's afs. M 24-39



CLARENCE W. WILSON & VIRGINIA F WILSON HSBND. & WF
ACREAGES IN SEC. 6, T. 29 S; R. 7 W; W. M;
DOUGLAS COUNTY, ORE.

MAY, 1971 1" = 100 ft.

M 41-63

M 41-63